

WILKINSON

SALES • LETTINGS • MANAGEMENT

£159,950

The Maltings, Station Street, Tewkesbury, GL20



2

Bedrooms



1

Bathroom

101 High Street, Tewkesbury, Gloucestershire, GL20 5JZ |
Info@wilkinsonslm.co.uk

01684 367736



- Over 55's Retirement Home
- NO ONWARD CHAIN
- Dual Aspect Lounge with Bay Window
- Kitchen
- Two Bedrooms
- Shower Room
- Storage Cupboards
- Garage
- Communal Gardens
- Tewkesbury Town Location

Wilkinson SLM are pleased to bring to market with NO ONWARD CHAIN, this spacious two bedroom retirement flat, situated on the first floor in The Maltings. The Maltings is a retirement home for over 55's with inviting communal gardens and located in the heart of Tewkesbury Town.

This home offers a dual aspect lounge with a bay window overlooking Tewkesbury and a useful storage cupboard, a kitchen with an array of base and wall units as well as space for a cooker and fridge. Also there are two bedrooms, with bedroom benefitting from a dual aspect style with built in double wardrobes and a shower room, equipped with a hand-rail for support. Finishing this retirement home is an airing cupboard in the hallway.

Further complementing this home is the rarity of a garage for the owner to use for storage!

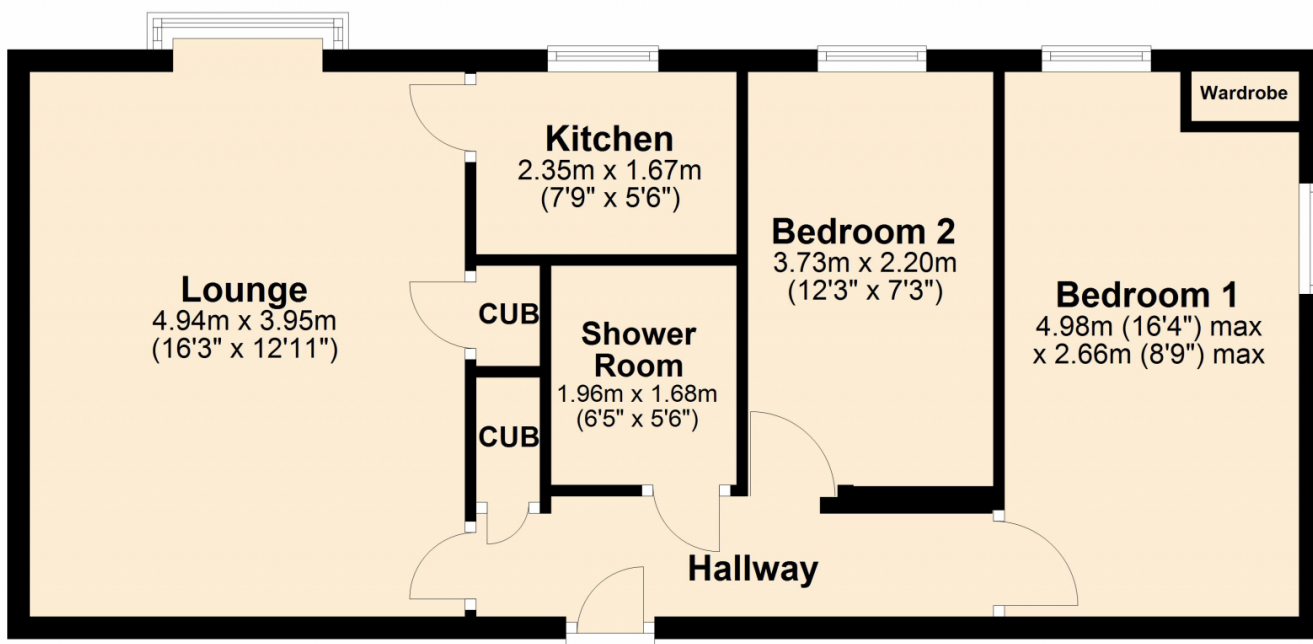
The Maltings has a communal lounge with access to the conservatory and beautiful communal gardens. Residents can enjoy these facilities or take a stroll to the local amenities. A 24 hour pull cord system, assists the residents in their time of need and can be found within their own flat.

Lease Length 961 years remaining.

Service Charge & Ground Rent: £352.12 per calendar month.

Ground Floor

Approx. 55.7 sq. metres (599.6 sq. feet)



Total area: approx. 55.7 sq. metres (599.6 sq. feet)

Energy Efficiency Rating

	Current	Potential
Very energy efficient - lower running costs		
(92+) A		
(81-91) B		
(69-80) C	77	77
(55-68) D		
(39-54) E		
(21-38) F		
(1-20) G		
Not energy efficient - higher running costs		
England, Scotland & Wales <small>EU Directive 2002/91/EC</small>		

Address: Station Street, GL20

