

WILKINSON

SALES • LETTINGS • MANAGEMENT

£230,000

Bredon Lodge, Bredon, Tewkesbury, GL20



2

Bedrooms



1

Bathroom

101 High Street, Tewkesbury, Gloucestershire, GL20 5JZ |
Info@wilkinsonsllm.co.uk

01684 367736



- NO ONWARD CHAIN
- End Terrace Bungalow
- Two Bedrooms
- Lounge/Dining Room
- Kitchen
- Wet Room
- Conservatory
- Parking
- Communal Gardens

Wilkinson SLM is excited to present a charming 2-bedroom end terrace bungalow in a desirable over 55's complex in the sought-after village of Bredon which has excellent amenities including a Doctors Surgery, village shop, parish church, a bowling green and well maintained recreational parks. You will also find a convenient bus links to both Tewkesbury and Cheltenham, making it an ideal setting for a relaxed and connected lifestyle.

Upon entering, you'll find a welcoming hallway that offers access to all rooms including a wet room, two bedrooms, the spacious lounge, and a practical storage cupboard. The living space features an electric fire and flows into the kitchen, which is equipped with a variety of base and wall units, an electric oven, and ample space for a fridge-freezer and washing machine. From the kitchen a door leads to the conservatory which provides an ideal space for relaxation or enjoying views of the birds in the nearby trees.

This bungalow offers two comfortable bedrooms, with the main bedroom benefiting from a large built-in wardrobe. The wet room is thoughtfully designed and features a generous shower area for ease of use.

Additional highlights include a separate storage cupboard, a front garden, a dedicated parking space, UPVC double glazing, and electric night storage heaters, all contributing to a comfortable and convenient living experience.

Service Charge: Approx £1000 pa which covers grounds maintenance, external building maintenance including the conservatory, window cleaning, building insurance, all water usage and drainage and use of the onsite meeting room.

Council Tax Band: D

Lounge/Dining Room 14' 0" x 12' 8" (4.27m x 3.86m)

Kitchen 10' 3" x 10' 0" (3.12m x 3.05m)

Bedroom One 14' 8" x 8' 4" (4.47m x 2.54m)
Maximum Measurements

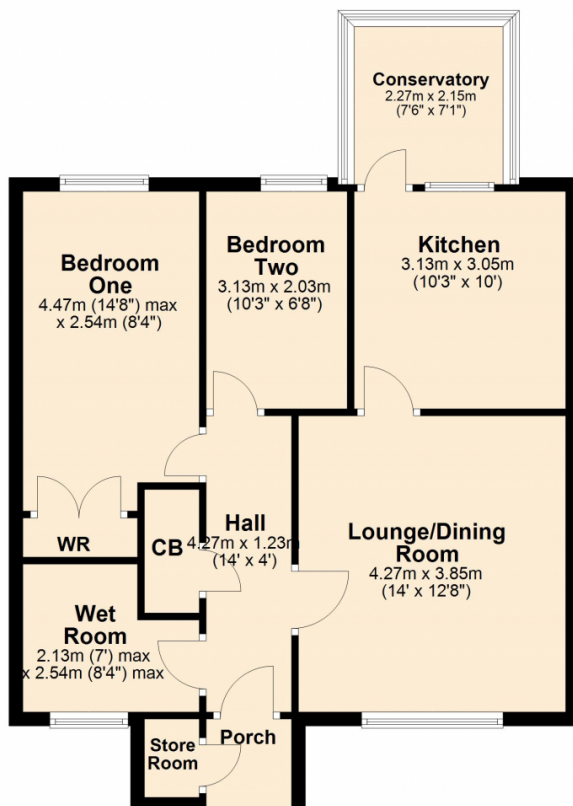
Bedroom Two 10' 3" x 6' 8" (3.12m x 2.03m)

Wet Room 7' 0" x 8' 4" (2.13m x 2.54m)
Maximum Measurements

Conservatory 7' 6" x 7' 1" (2.29m x 2.16m)

Ground Floor

Approx. 65.3 sq. metres (702.9 sq. feet)



Total area: approx. 65.3 sq. metres (702.9 sq. feet)

This plan is not to scale and is for guidance only. Produced by PlanUp.
Plan produced using PlanUp.

