

WILKINSON

SALES • LETTINGS • MANAGEMENT

£250,000

Bredon Lodge, Bredon, GL20



 **2**
Bedrooms

 **1**
Bathroom

101 High Street, Tewkesbury, Gloucestershire, GL20 5JZ |
Info@wilkinsonslm.co.uk

01684 367736



- No Onward Chain
- Over 55's Retirement Complex
- End Terrace Bungalow
- Two Bedrooms
- Lounge/Dining Room
- Kitchen
- Wet Room
- Conservatory
- Parking
- Communal Gardens

Wilkinson SLM is excited to present a charming 2-bedroom end terrace bungalow in a desirable over 55's retirement complex in the sought-after village of Bredon.

Upon entering, you'll find a welcoming hallway that leads to the wet room, bedrooms, lounge, and a handy storage cupboard. The spacious lounge/dining room features an electric fire and flows into the kitchen, which is equipped with a variety of base and wall units, an electric oven, and ample space for a fridge-freezer and washing machine. A door from the kitchen leads to the conservatory, providing an ideal space for relaxation or enjoying views of the birds in the nearby trees.

This bungalow offers two comfortable bedrooms, with the main bedroom benefiting from a large built-in wardrobe. The wet room is thoughtfully designed and features a generous shower area for ease of use.

Additional highlights include a separate storage cupboard, a front garden, a dedicated parking space, UPVC double glazing, and electric night storage heaters, all contributing to a comfortable and convenient living experience.

Ground Rent Charges : Approx £1000 pa.

Council Tax Band: D

Lounge/Dining Room 14' 0" x 12' 8" (4.27m x 3.86m)

Kitchen 10' 3" x 10' 0" (3.12m x 3.05m)

Bedroom One 14' 8" x 8' 4" (4.47m x 2.54m)
Maximum Measurements

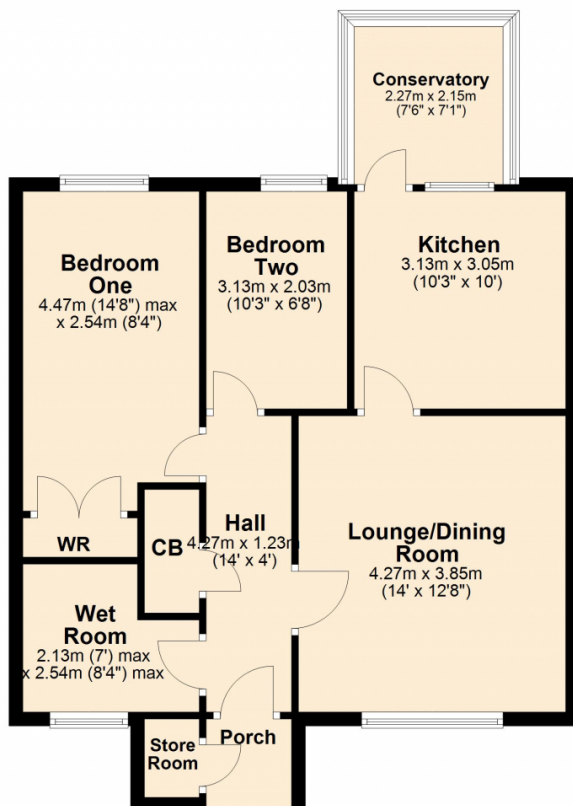
Bedroom Two 10' 3" x 6' 8" (3.12m x 2.03m)

Wet Room 7' 0" x 8' 4" (2.13m x 2.54m)
Maximum Measurements

Conservatory 7' 6" x 7' 1" (2.29m x 2.16m)

Ground Floor

Approx. 65.3 sq. metres (702.9 sq. feet)



Total area: approx. 65.3 sq. metres (702.9 sq. feet)

This plan is not to scale and is for guidance only. Produced by PlanUp.
Plan produced using PlanUp.

