



 3

Bedrooms

 1

Bathroom



- Semi Detached Bungalow
- Lounge With Multi Fuel Log Burner
- Refitted Kitchen
- Three Bedrooms
- Refitted Bathroom
- UPVC Double Glazing
- Gas Central Heating
- Rear Garden
- Ample Off Road Parking

Wilkinson SLM are delighted to offer for sale an immaculate semi detached bungalow located on the popular Newtown development.

From the entrance hall bedroom one is located to the right and bedroom three is located on the left. The lounge is also located on right hand side of the hallway and this spacious room has a multi fuel log burner and sliding patio doors leading to the rear garden. Further down the hallway is the refitted bathroom with a hidden cupboard behind the mirror! The refitted kitchen has an array of wall and base level storage unit with integrated self cleaning slide and hide oven and integrated microwave, fridge freezer, washing machine, dishwasher and tumble dryer!!! At the end of the hallway is bedroom two and a large storage cupboard.

This beautiful home is further complemented by UPVC double glazing, gas central heating, off road parking and a low maintenance rear garden with side access.

This home is an absolute must to view to fully appreciate just what there is to offer here!!!

Lounge 16' 3" x 11' 10" (4.95m x 3.61m)

Kitchen 12' 10" x 10' 10" (3.91m x 3.30m)

Bedroom One 11' 10" x 9' 5" (3.61m x 2.87m)

Bedroom Two 11' 10" x 8' 0" (3.61m x 2.44m)

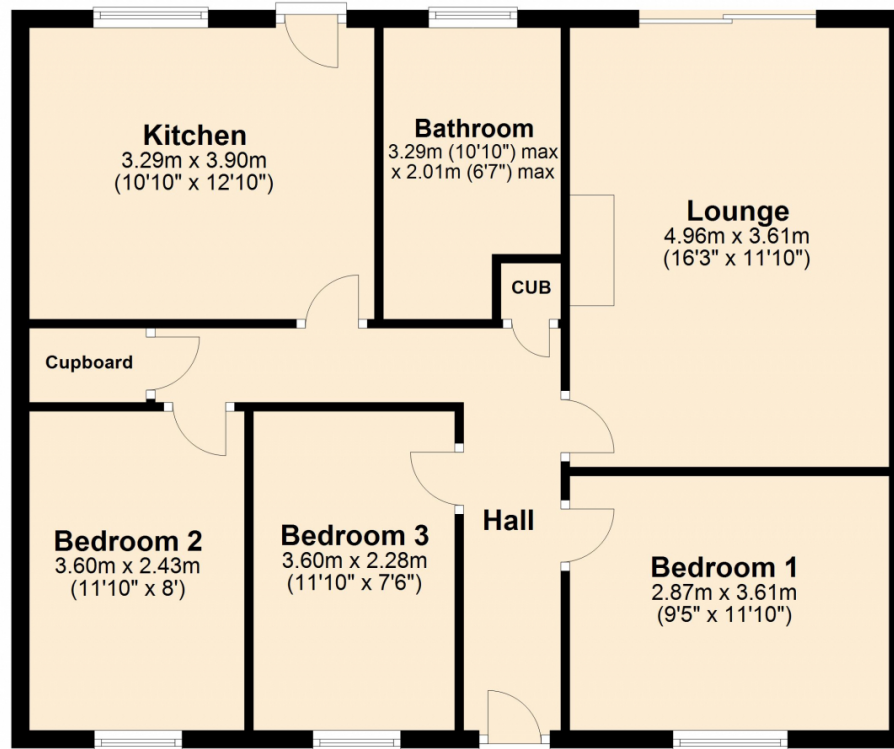
Bedroom Three 11' 10" x 7' 6" (3.61m x 2.29m)

Bathroom 10' 10" x 6' 7" (3.30m x 2.01m)

maximum measurements

Ground Floor

Approx. 77.0 sq. metres (829.1 sq. feet)



Total area: approx. 77.0 sq. metres (829.1 sq. feet)

This plan is not to scale and is for guidance only. Produced by PlanUp.
Plan produced using PlanUp.

