



 **3**  
Bedrooms

 **1**  
Bathroom



- Semi Detached House
- Contemporary Kitchen
- Dining Area
- Lounge/Family Room with Bay Window
- Conservatory
- Downstairs WC
- Three Bedrooms
- Family Bathroom
- Beautiful Front & Rear Gardens
- Gas Central Heating
- UPVC Double Glazing

Wilkinson SLM are delighted to bring to market an extended, three bedroom semi detached house in Tewkesbury with just a short walking distance to local amenities. This home has been loved by the current owners for many years and it's now time for new owners to create their memories.

Upon arrival, the front door welcomes a light and airy hallway with a further door opening to the dual aspect lounge/family room with the advantage of a gas fireplace and a lovely bay window. Sliding doors lead to the rear garden. From the lounge, a door takes you to the dining area and very useful, under-stairs storage cupboard. A large archway from the dining area leads to the contemporary kitchen with the added benefit of an integrated fridge, freeze, built in electric oven and gas hob as well as various base and wall units. An external door in the kitchen opens to the front of the house.

The kitchen leads seamlessly to the downstairs WC and conservatory which is a fantastic room to appreciate the beauty of the rear garden. The stunning rear garden has a patio area with a pathway leading to a raised patio area and the remainder laid to lawn. There is also a pebbled area where the owner has added plant pots around. Finishing this beauty of a garden is a large storage shed.

Occupying the first floor are two double bedrooms, a single bedroom and a family bathroom. Bedroom one benefits from built in storage units and wardrobes and bedroom three has a loft bed to use the stair well practically. Also on the first floor is the airing cupboard where the combi boiler is located and it is only two years old!

Further complementing this home is UPVC double glazing, gas central heating and a lovely front garden. A viewing comes highly recommended to see the generous accommodation this home has to offer!

**Lounge/Family Room** 21' 9" x 15' 3" (6.63m x 4.65m) *maximum measurements*

**Kitchen** 17' 9" x 10' 6" (5.41m x 3.20m) *maximum measurements*

**Dining Area** 9' 4" x 6' 11" (2.84m x 2.11m) *maximum measurements*

**Conservatory** 9' 10" x 9' 6" (3.00m x 2.90m)

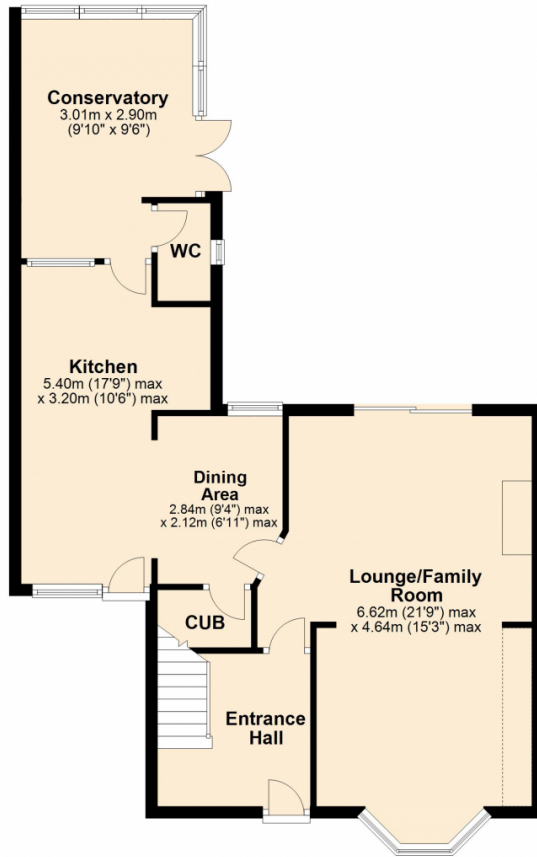
**Bedroom One** 10' 10" x 13' 2" (3.30m x 4.01m) *maximum measurements*

**Bedroom Two** 10' 8" x 14' 5" (3.25m x 4.39m) *maximum measurements*

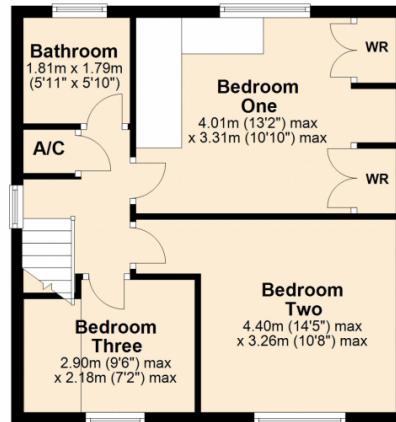
**Bedroom Three** 7' 2" x 9' 6" (2.18m x 2.90m) *maximum measurements*

**Bathroom** 5' 10" x 5' 11" (1.78m x 1.80m)

### Ground Floor



### First Floor



This plan is not to scale and is for guidance only. Produced by PlanUp.  
Plan produced using PlanUp.

