

WILKINSON

SALES • LETTINGS • MANAGEMENT

£165,000

Braeburn House, Victoria Circus, Tewkesbury, GL20



2

Bedrooms



2

Bathrooms

101 High Street, Tewkesbury, Gloucestershire, GL20 5JZ |
Info@wilkinsonslm.co.uk

01684 367736



- NO ONWARD CHAIN
- First Floor Apartment
- Open Plan Lounge/Dining/Kitchen
- Two Double Bedrooms
- En-Suite Shower Room
- Bathroom
- UPVC Double Glazing
- Gas Central Heating
- Allocated Off Road Parking

Wilkinson SLM are delighted to offer for sale with NO ONWARD CHAIN a first floor apartment located on The Meadows development in Mitton.

From the hallway there is a door leading through to the open plan lounge/kitchen/dining room with double doors off the lounge area and the kitchen has a built in electric oven and gas hob with space for washing machine and fridge freezer.

There are two double bedrooms and a modern bathroom. Bedroom one has a Juliet balcony overlooking the green and also has the added benefit of an ensuite shower room.

This lovely apartment is further complemented by UPVC double glazing, gas central heating, allocated off road parking for one car and a visitors parking space. There is also a specific bike shed and bin storage for the residents.

Council Tax Band B.

Ground Rent and Service Charge Approximately £175 per month.

232 years remaining on the lease.

Open Plan Lounge/Dining/Kitchen 26' 1" x 13' 7" (7.95m x 4.14m)
maximum measurements

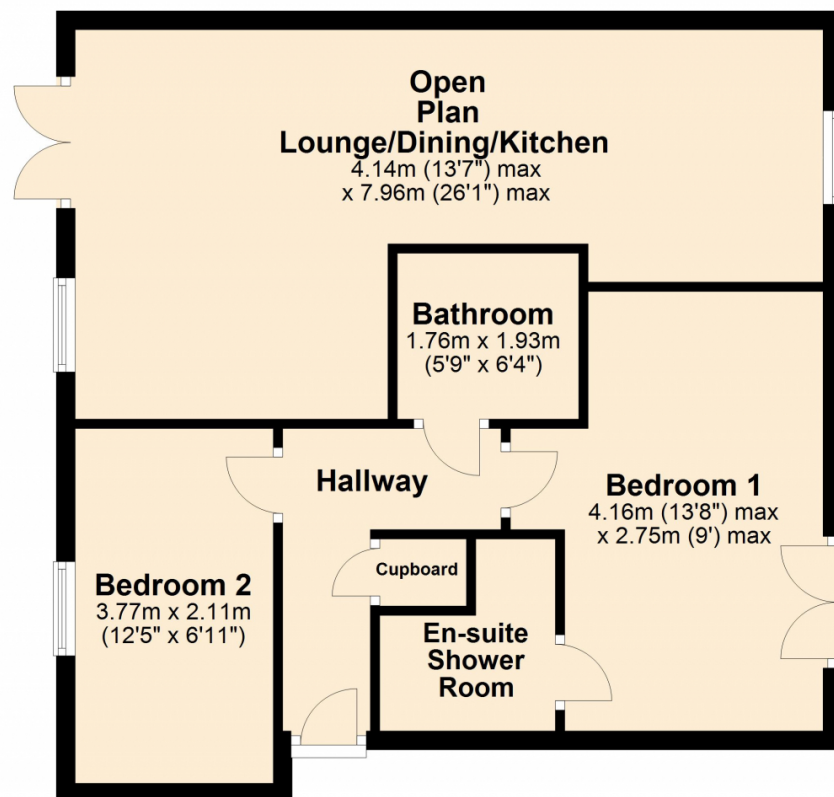
Bedroom One 13' 8" x 9' 0" (4.17m x 2.74m)
maximum measurements

En-Suite Shower Room 6' 8" x 6' 2" (2.03m x 1.88m)
maximum measurements

Bedroom Two 12' 5" x 6' 11" (3.78m x 2.11m)

Bathroom 6' 4" x 5' 9" (1.93m x 1.75m)

Ground Floor



This plan is not to scale and is for guidance only. Produced by PlanUp.
Plan produced using PlanUp.

Energy Efficiency Rating

	Current	Potential
Very energy efficient - lower running costs		
(92+) A		
(81-91) B	81	81
(69-80) C		
(55-68) D		
(39-54) E		
(21-38) F		
(1-20) G		
Not energy efficient - higher running costs		
England, Scotland & Wales		EU Directive 2002/91/EC

Address: Braeburn House, GL20

