

# WILKINSON

SALES • LETTINGS • MANAGEMENT

£360,000

King Johns Court, Tewkesbury, GL20



 3

Bedrooms

 2

Bathrooms

101 High Street, Tewkesbury, Gloucestershire, GL20 5JZ |  
Info@wilkinsonslm.co.uk

01684 367736



- NO ONWARD CHAIN
- Three Storey Town House
- Lounge/Dining Room
- Kitchen/Breakfast Room
- Study
- Three Double Bedrooms
- En-Suite Shower Room
- Four Piece Bathroom Suite
- Double Glazing
- Gas Central Heating
- Garage & Off Road Parking
- Balcony Overlooking The River
- Town Centre Location

Wilkinson SLM are delighted to bring to market with NO ONWARD CHAIN, a three storey town town house over looking the River Severn and views towards The Malvern Hills.

From the entrance hall there is an entrance hall, access to the garage and door leading to bedroom two. This light and airy room offers an en-suite shower room, storage cupboard and patio doors opening out onto the balcony where you can sit and watch those stunning views!

Located on the first floor is the study, lounge/dining room and kitchen/breakfast room with built in electric oven and gas hob and space for washing machine and fridge freezer.

On the second floor are bedrooms one and three that have a 'Jack & Jill' four piece bathroom suite. Bedroom one offers two built in wardrobes.

This lovely home is further complemented by double glazing, gas central heating, garage and off road parking.

Book now so you don't miss out on exactly what this home has to offer!

Estate Charge of £60 per year.

Council Tax Band D.

**Lounge/Dining Room** 14' 10" x 16' 0" (4.52m x 4.88m) *maximum measurements*

**Kitchen/Breakfast Room** 14' 6" x 8' 2" (4.42m x 2.49m)

**Study** 6' 7" x 6' 4" (2.01m x 1.93m)

**Bedroom One** 14' 10" x 11' 1" (4.52m x 3.38m)

**Bedroom Two** 13' 6" x 11' 5" (4.11m x 3.48m) *maximum measurements*

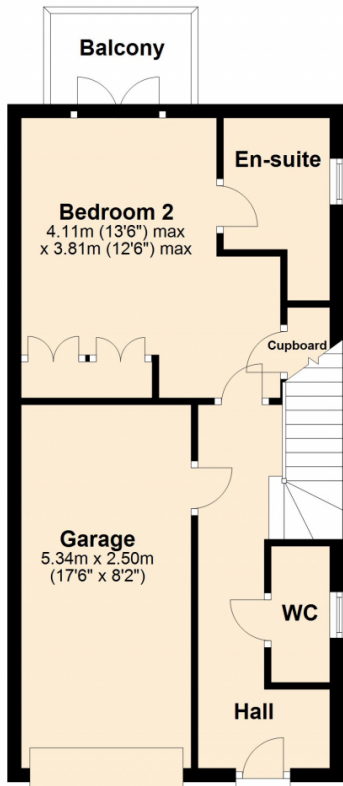
**En-Suite Shower Room** 8' 10" x 5' 1" (2.69m x 1.55m) *maximum measurements*

**Bedroom Three** 14' 10" x 9' 9" (4.52m x 2.97m) *maximum measurements*

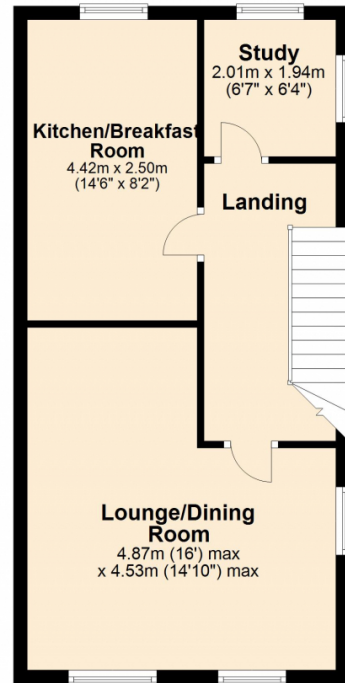
**Bathroom** 8' 3" x 7' 3" (2.51m x 2.21m)

**Garage** 17' 6" x 8' 2" (5.33m x 2.49m)

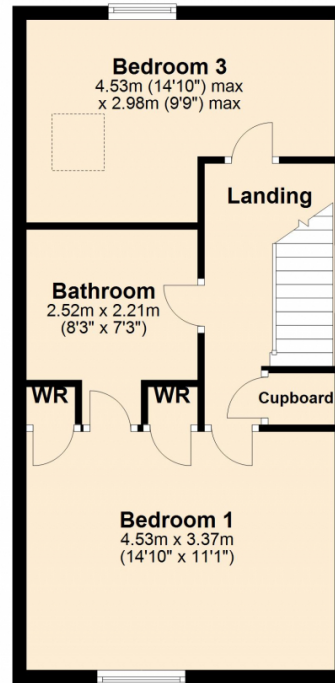
### Ground Floor



### First Floor



### Second Floor



This plan is not to scale and is for guidance only. Produced by PlanUp.  
Plan produced using PlanUp.

