

WILKINSON

SALES • LETTINGS • MANAGEMENT

£165,000

Webber House, Tewkesbury, GL20



 **2**
Bedrooms

 **1**
Bathroom

101 High Street, Tewkesbury, Gloucestershire, GL20 5JZ |
Info@wilkinsonslm.co.uk

01684 367736



- Ground Floor Retirement Apartment
- Lounge
- Kitchen
- Utility Room
- Two Double Bedrooms
- Shower Room
- Communal Gardens
- NO ONWARD CHAIN

Wilkinson SLM are delighted to offer for sale with NO ONWARD CHAIN a ground floor two bedroom apartment located at the over 55's development of Shepherd Mead.

Situated at the back of Webber House the apartment is accessed via a communal door that leads to the apartment itself. There is a large entrance hall and to the right a door opens to a useful utility room and a further door leading to the lounge room.. The lounge has an archway way opening to refitted kitchen with built in electric oven and hob. To the left of the hall are two double bedrooms and a shower room with bedroom one having the added benefit of built in wardrobes.

Shepherd Mead has beautifully maintained communal gardens, a laundry room and communal lounge area!

Council Tax Band - B

Ground Rent & Service Charge - £235 pcm

Lease Length Remaining: 154 years

Lounge 13' 10" x 12' 3" (4.22m x 3.73m)

Kitchen 9' 8" x 6' 5" (2.95m x 1.96m)

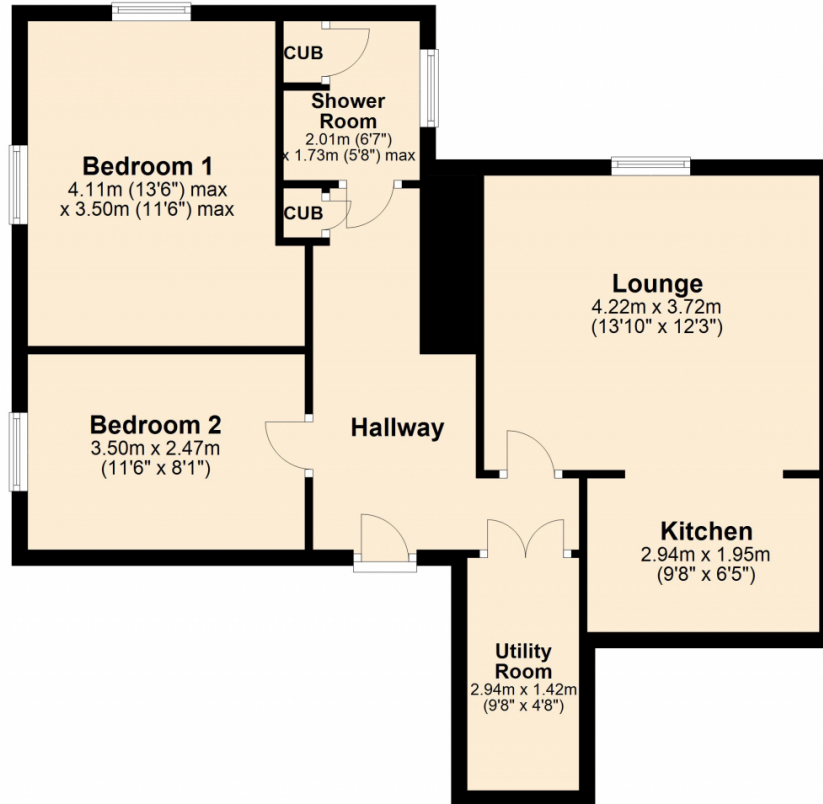
Utility Room 9' 8" x 4' 8" (2.95m x 1.42m)

Bedroom One 13' 6" x 11' 6" (4.11m x 3.51m)
maximum measurements

Bedroom Two 11' 6" x 8' 1" (3.51m x 2.46m)

Shower Room 6' 7" x 5' 8" (2.01m x 1.73m)

Ground Floor



This plan is not to scale and is for guidance only. Produced by PlanUp.
Plan produced using PlanUp.

Energy Efficiency Rating		Current	Potential
Very energy efficient - lower running costs			
(92+)	A		
(81-91)	B		
(69-80)	C		75
(55-68)	D		
(39-54)	E	53	
(21-38)	F		
(1-20)	G		
Not energy efficient - higher running costs			
England, Scotland & Wales		EU Directive 2002/91/EC	

Address: Webber House, GL20

