



2

Bedrooms



1

Bathroom



- Detached Bungalow
- NO ONWARD CHAIN
- Kitchen
- Lounge
- Two Double Bedrooms
- Bathroom
- Rear Garden
- Garage & Driveway
- Gas Central Heating
- Cul De Sac Location

Wilkinson SLM are happy to bring to market with NO ONWARD CHAIN, a lovely two bedroom detached bungalow, situated in a quiet cul de sac in Northway with pretty front and rear gardens, a garage and driveway.

The accommodation offers a kitchen with base and wall units and a 9kg washing machine with a side door, providing access to the garage and driveway. There is also a lounge with a bay window and an electric fireplace. From the lounge is a door that leads you to the two double bedrooms and bathroom. Bedroom one has the added benefit of an over bed storage unit and bedroom two has an external door that welcomes the rear garden.

The rear garden has a large patio area with surrounding shrubs and flower beds to provide some beautiful greenery. There is a side door in the garage that can be accessed from the garden too. The garage has the advantage of power and lighting.

This bungalow is further complemented by UPVC double glazing and gas central heating. Book your viewing today!

Lounge 17' 2" x 9' 8" (5.23m x 2.95m)

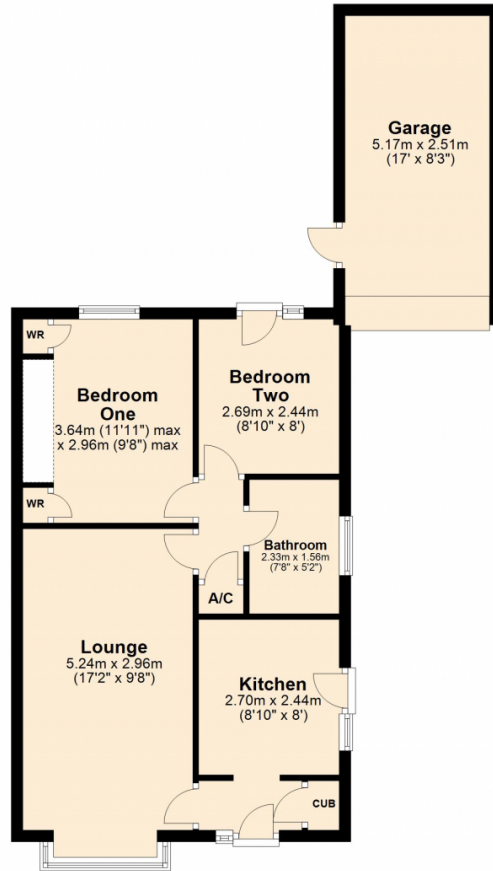
Kitchen 8' 10" x 8' 0" (2.69m x 2.44m)

Bedroom One 11' 11" x 9' 8" (3.63m x 2.95m)
maximum measurements

Bedroom Two 8' 10" x 8' (2.69m x 2.44m)

Garage 17' 0" x 8' 3" (5.18m x 2.51m)

Ground Floor



This plan is not to scale and is for guidance only. Produced by PlanUp.
Plan produced using PlanUp.

