

WILKINSON

SALES • LETTINGS • MANAGEMENT

£160,000

Sinderberry Drive, Northway, Tewkesbury, GL20



 1
Bedroom

 1
Bathroom

101 High Street, Tewkesbury, Gloucestershire, GL20 5JZ |
Info@wilkinsonslm.co.uk

01684 367736



- Terraced House
- Lounge
- Kitchen
- One Bedroom
- Bathroom
- Front Garden
- Off Road Parking
- UPVC Double Glazing
- Gas Central Heating

Wilkinson SLM are delighted to bring to market a one bedroom terraced home in a quiet cul-de-sac on the popular residential development of Northway.

Upon arrival at the property a path leads you through the front garden which is mainly laid to lawn with a small picket fence running along the boundary to the porch. The front door opens to the open plan lounge and kitchen which consists of various base and wall units, integrated electric oven and hob and fridge freezer.

A spiral staircase leads you to the first floor where you will find the bathroom and bedroom with built in wardrobe and cupboard.

Further complementing this property is UPVC double glazing and gas central heating and off road parking for 2 cars.

Council Tax Band A.

Lounge 13' 1" x 15' 0" (3.99m x 4.57m)

Maximum Measurements

Kitchen 5' 6" x 6' 5" (1.68m x 1.96m)

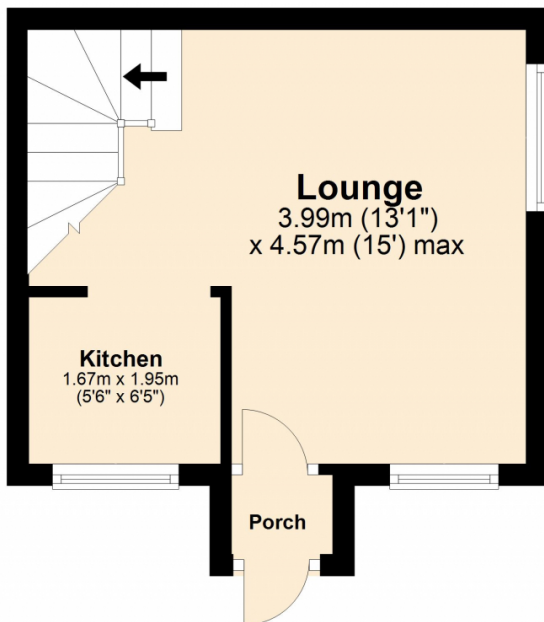
Bedroom 13' 1" x 8' 2" (3.99m x 2.49m)

Bathroom 5' 6" x 7' 2" (1.68m x 2.18m)

Maximum Measurements

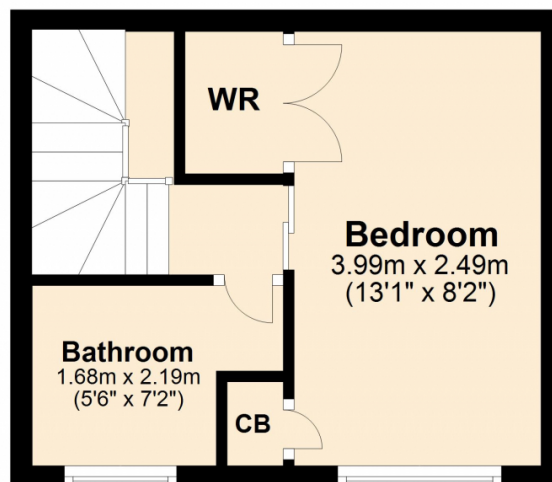
Ground Floor

Approx. 19.0 sq. metres (204.5 sq. feet)



First Floor

Approx. 18.6 sq. metres (200.7 sq. feet)



Total area: approx. 37.6 sq. metres (405.2 sq. feet)

This plan is not to scale and is for guidance only. Produced by PlanUp.
Plan produced using PlanUp.

Energy Efficiency Rating

	Current	Potential
Very energy efficient - lower running costs		
(92+) A		94
(81-91) B		
(69-80) C	75	
(55-68) D		
(39-54) E		
(21-38) F		
(1-20) G		
Not energy efficient - higher running costs		
England, Scotland & Wales		EU Directive 2002/91/EC

Address: Sinderberry Drive, Northway, Tewkesbury, GL20

