



 4  
Bedrooms

 2  
Bathrooms



- Semi Detached Dorma Bungalow
- Extended Open Plan Living
- Utility
- Bathroom
- Four Bedrooms
- Shower Room
- Garage/Storage Room
- Rear Garden
- Off Road Parking for Two
- UPVC Double Glazing
- Underfloor Heating
- Oil Fuelled Heating

Wilkinson SLM proudly presents a stunning 4 bedroom extended semi detached dorma bungalow, in the highly sought after village of Twynning. This family orientated home boasts a captivating open plan living design, providing ample living space.

Upon entering the property through the main door you are welcomed by a well lit hallway with doors and stairs leading to the rest of the home. The door in front of you opens to an impressive open plan living space which has three zones. The lounge area includes a log burner and views out onto the garden. The stunning kitchen features an array of base and wall units with a built in dishwasher, fridge/freezer and electric hob, and flows through to the dining area and utility where there is space for a washing machine and tumble dryer. A stable style door accesses the side of the property. To complement this open plan living space are tri fold doors opening to the rear garden and a large ceiling lantern which allows for lots of natural light to fill the living space. Finishing off the downstairs are two double bedrooms and the main bathroom.

Ascending the stairs to the first floor you will find two further bedrooms and a shower room. Storage into the eaves and velux windows which flood the space with natural light complete this space.

The rear of the property boasts a spacious seating area ideal for summer time relaxation and steps leading up to a grass area which is perfect for children's toys or is the perfect space for a keen gardener.

This stunning home is enhanced by UPVC double glazing, underfloor heating in the kitchen/dining room. oil fuelled heating and off road parking for two vehicles.

**Lounge** 16' 10" x 10' 11" (5.13m x 3.33m)

**Kitchen/Dining Room** 14' 5" x 23' 10" (4.39m x 7.26m)

**Kitchen** 7' 10" x 9' 0" (2.39m x 2.74m)

**Utility** 4' 2" x 3' 2" (1.27m x 0.97m)

**Bathroom** 5' 5" x 6' 6" (1.65m x 1.98m)

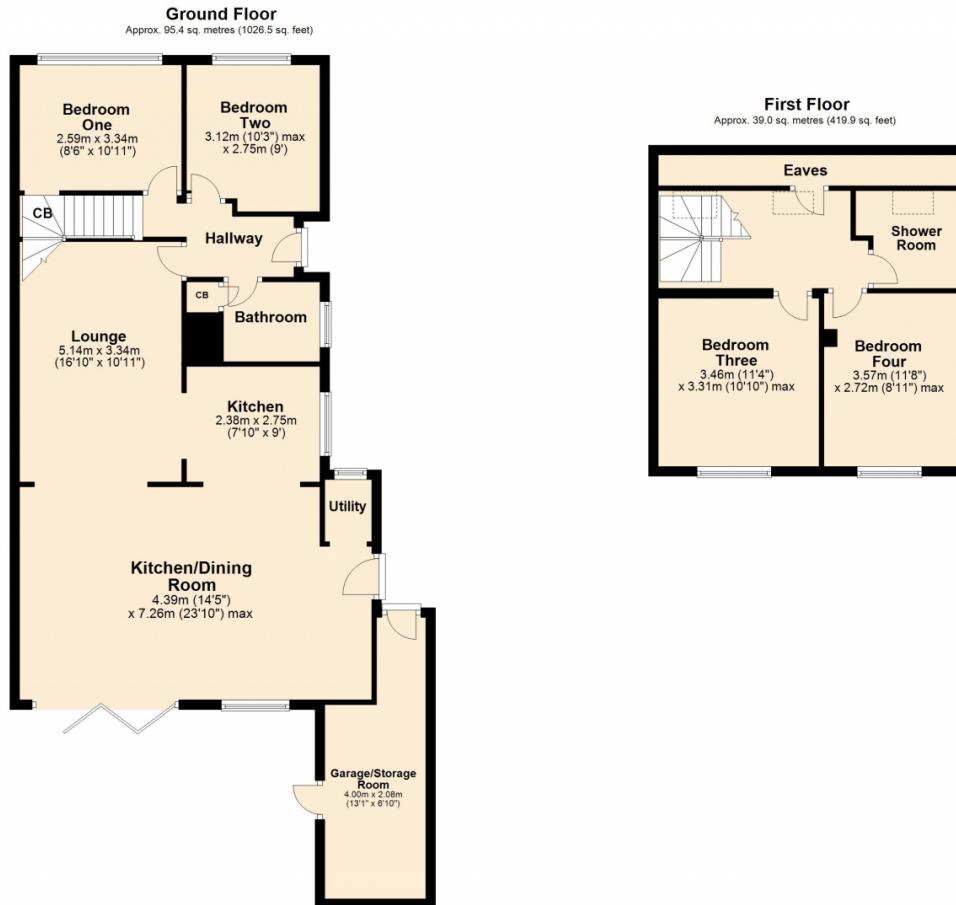
**Bedroom One** 8' 6" x 10' 11" (2.59m x 3.33m)

**Bedroom Two** 10' 3" x 9' 0" (3.12m x 2.74m) *maximum measurements*

**Bedroom Three** 11' 4" x 10' 10" (3.45m x 3.30m) *maximum measurements*

**Bedroom Four** 11' 4" x 8' 11" (3.45m x 2.72m) *maximum measurements*

**Shower Room** 6' 7" x 7' 0" (2.01m x 2.13m) *maximum measurements*



Total area: approx. 134.4 sq. metres (1446.4 sq. feet)

This plan is not to scale and is for guidance only. Produced by PlanUp.  
Plan produced using PlanUp.

