



2

Bedrooms



1

Bathroom



- Semi Detached Bungalow
- Lounge With Bay Window
- Kitchen
- Conservatory
- Two Bedrooms
- Bathroom
- UPVC Double Glazing
- Gas Central Heating
- Front & Rear Gardens
- Detached Garage
- Off Road Parking
- NO ONWARD CHIAN

Wilkinson SLM are delighted to bring to market with NO ONWARD CHAIN a semi detached bungalow located at the end of a cul-de-sac on the Northway development.

From the entrance hall there is a storage cupboard to the left and then an opening in front of you that leads through to the kitchen which has a built in electric oven and hob, integrated slimline dishwasher and space for washing machine and fridge freezer. There is also a door that leads to the side of the home. The lounge is also access from the hallway which has a lovely bay window and a door that leads to an inner hallway.

Bedrooms one and two and the bathroom are located off the inner hall with bedroom one having sliding patio doors that open up to the conservatory. French doors open out to the private rear garden.

This lovely home is further complemented by UPVC double glazing, gas central heating, off road parking, detached garage and gardens to the front and rear.

Lounge 15' 10" x 12' 9" (4.83m x 3.89m)

Kitchen 9' 1" x 7' 0" (2.77m x 2.13m)

Conservatory 10' 4" x 9' 10" (3.15m x 3.00m)

Bedroom One 13' 1" x 9' 3" (3.99m x 2.82m)

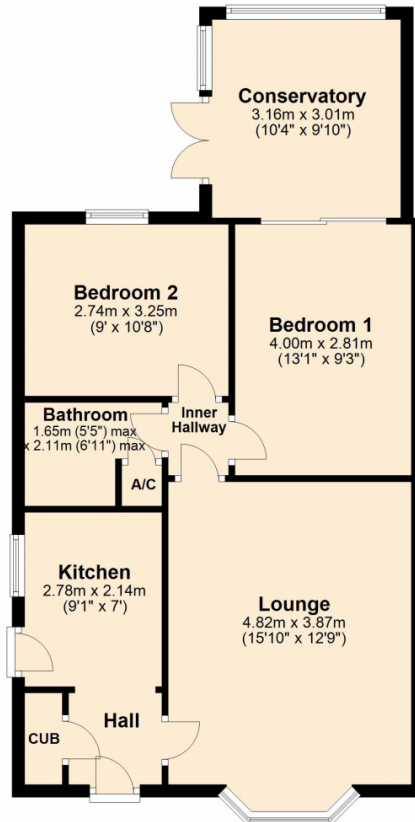
Bedroom Two 10' 8" x 9' 0" (3.25m x 2.74m)

Bathroom 6' 11" x 5' 5" (2.11m x 1.65m)

maximum measurements

Ground Floor

Approx. 65.0 sq. metres (700.0 sq. feet)



Total area: approx. 65.0 sq. metres (700.0 sq. feet)

This plan is not to scale and is for guidance only. Produced by PlanUp.
Plan produced using PlanUp.

Energy Efficiency Rating		Current	Potential
Very energy efficient - lower running costs			
(92+)	A		91
(81-91)	B		
(69-80)	C		
(55-68)	D	68	
(39-54)	E		
(21-38)	F		
(1-20)	G		
Not energy efficient - higher running costs			
England, Scotland & Wales		EU Directive 2002/91/EC	

Address: Park Close, Northway, Tewkesbury, GL20

