



2

Bedrooms



1

Bathroom



- BRAND NEW HOME
- Detached House
- Front to Back Kitchen/Dining Room
- Lounge
- Downstairs WC
- Two Double Bedrooms
- Family Bathroom
- Rear Garden
- Off Road Parking
- UPVC Double Glazing
- Air Source Pump Heating

Wilkinson SLM are delighted to bring to market, a fantastic opportunity to purchase a BRAND NEW two bedroom detached house in Tewkesbury.

The front door opens to a hallway with a door to the left entering the front to back kitchen/dining room with French doors leading to the rear garden. To the right of the hallway is the lounge with French doors opening to the side of the property. There is also be a downstairs WC to finish the ground floor.

The first floor accommodates two double bedrooms and a family bathroom.

This home offers two parking spaces in front of the property, Air Source Heat Pump and UPVC double glazing.

Call us today before you miss out on purchasing this truly lovely home!

Kitchen/Dining Room 17' 4" x 11' 10" (5.28m x 3.61m)

Lounge 12' 1" x 11' 7" (3.68m x 3.53m)

Bedroom One 11' 10" x 8' 7" (3.61m x 2.62m)

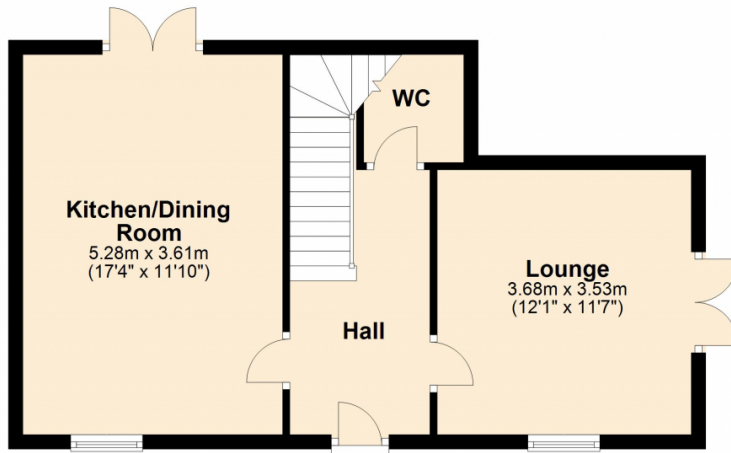
maximum measurements

Bedroom Two 11' 10" x 8' 4" (3.61m x 2.54m)

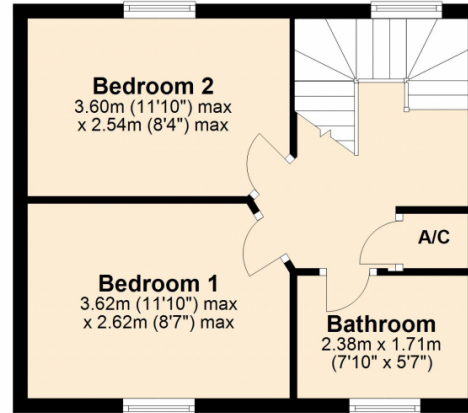
maximum measurements

Bathroom 7' 10" x 5' 7" (2.39m x 1.70m)

Ground Floor



First Floor



This plan is not to scale and is for guidance only. Produced by PlanUp.
Plan produced using PlanUp.

