



2

Bedrooms



1

Bathroom



- First Floor Apartment
- Two Bedrooms
- Lounge
- Kitchen/Dining Room
- Bathroom
- Separate WC
- Private Access
- Outside Storage Cupboard

Wilkinson SLM are pleased to offer for sale this well presented two bedroom apartment located on the Priors Park development of Tewkesbury.

You enter the property via your own personal door with stairs leading up to a spacious landing. From here you walk into the hallway with doors opening to all the rooms and two storage cupboards.

At the far end of hallway is the lounge with a large window allowing lots of natural light. The kitchen/dining room has windows at either end, a built in electric oven and gas hob and free standing fridge/freezer with various base and wall units.

The two bedrooms are both double in size with bedroom two having the added benefit of a built in wardrobe. The family bathroom has a bath and separate shower cubicle and a separate WC.

This home is complemented by gas central heating, UPVC double glazing and an outside storage cupboard.

82 years remaining on the lease. Ground Rent £10 per year. Service Charge £509.54 per year.

Lounge 13' 5" x 10' 10" (4.09m x 3.30m)

Kitchen/Dining Room 17' 5" x 10' 8" (5.31m x 3.25m)

Maximum Measurements

Bedroom One 13' 6" x 9' 5" (4.11m x 2.87m)

Maximum Measurements

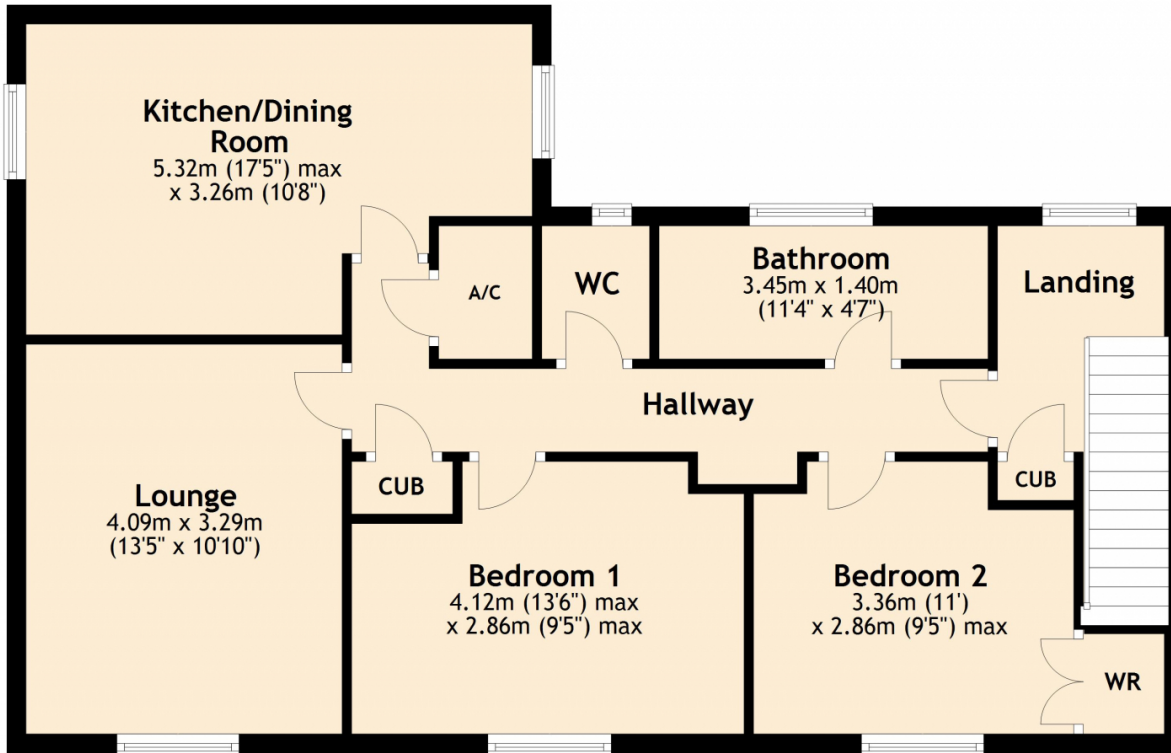
Bedroom Two

Maximum Measurements

Bathroom 11' 4" x 4' 7" (3.45m x 1.40m)

WC 3' 9" x 11' 4" (1.14m x 3.45m)

First Floor



Total area: approx. 75.0 sq. metres (807.3 sq. feet)

This plan is not to scale and is for guidance only. Produced by PlanUp.
Plan produced using PlanUp.

Energy Efficiency Rating		Current	Potential
Very energy efficient - lower running costs			
(92+)	A		
(81-91)	B		
(69-80)	C	70	75
(55-68)	D		
(39-54)	E		
(21-38)	F		
(1-20)	G		
Not energy efficient - higher running costs			
England, Scotland & Wales		EU Directive 2002/91/EC	

Address: 71 Perry Hill, GL20

