

WILKINSON

SALES • LETTINGS • MANAGEMENT

£450,000

Tendergreen View, Tewkesbury, GL20



4

Bedrooms



2

Bathrooms

101 High Street, Tewkesbury, Gloucestershire, GL20 5JZ |
Info@wilkinsonslm.co.uk

01684 367736



- Detached Home
- Kitchen/ Dining Room
- Lounge
- Study
- Utility
- Downstairs WC
- Four Bedrooms
- Ensuite & Family Bathroom
- Rear Garden
- Garage & Off Road Parking
- UPVC Double Glazing
- Gas Central Heating

Wilkinson SLM are delighted to bring to market a beautiful four bedroom detached home on a corner plot on the desirable Meadows development near Mitton with easy walking distance to the town centre.

Upon arrival, the front door opens to a spacious hallway with stairs leading to the first floor in front of you and doors on either side leading to the study, lounge, utility, WC and kitchen/dining room. The study is the first door on the left which has a front aspect window and the current owners use it as a playroom. The spacious lounge has french doors opening to the enclosed rear garden. The front to back kitchen/dining room has various base and wall units, built in oven and hob, dishwasher, space for a fridge freezer and space for a table and chairs. The utility room has space and plumbing for washing machine and tumble dryer and a patio door opening on to the rear garden.

The walled rear garden offers a good degree of privacy with a patio area directly outside the lounge and utility doors, the remainder is laid to lawn with a raised flower bed across the back. A gate at the side allows access to the front of the property and the garage from the garden.

The first floor accommodates three double bedrooms and a single bedroom. The main bedroom boasts a newly refurbished ensuite while bedroom two has double built in wardrobes. A family bathroom completes the first floor accommodation.

Further complementing this detached home is a garage with power and lighting, UPVC double glazing, gas central heating and off road parking.

Kitchen/ Dining Room 19' 7" x 9' 1" (5.97m x 2.77m)

Lounge 17' 1" x 10' 7" (5.21m x 3.23m)

Study 7' 8" x 8' 5" (2.34m x 2.57m) *maximum measurements*

Downstairs WC 3' 1" x 6' 10" (0.94m x 2.08m) *maximum measurements*

Utility 5' 11" x 6' 1" (1.80m x 1.85m)

Bedroom One 11' 3" x 10' 7" (3.43m x 3.23m)

Ensuite 6' 2" x 5' 7" (1.88m x 1.70m)

Bedroom Two 9' 3" x 10' 7" (2.82m x 3.23m)

Bedroom Three 11' 3" x 9' 7" (3.43m x 2.92m) *maximum measurements*

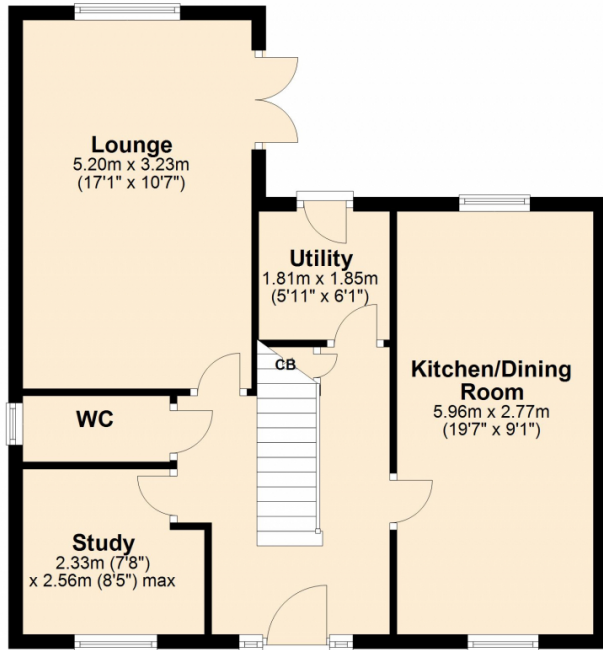
Bedroom Four 8' 0" x 9' 3" (2.44m x 2.82m) *maximum measurements*

Bathroom 5' 7" x 7' 0" (1.70m x 2.13m)

Garage 17' 6" x 8' 7" (5.33m x 2.62m)

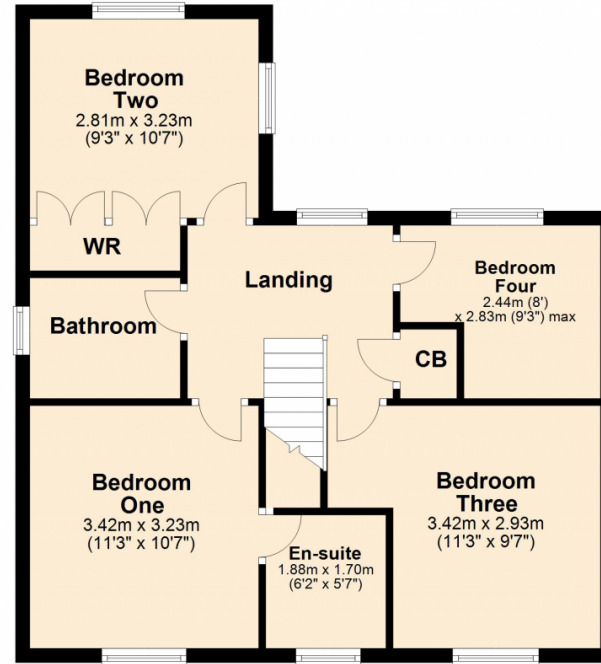
Ground Floor

Approx. 56.7 sq. metres (610.3 sq. feet)



First Floor

Approx. 57.2 sq. metres (616.0 sq. feet)



Total area: approx. 113.9 sq. metres (1226.4 sq. feet)

This plan is not to scale and is for guidance only. Produced by PlanUp.
Plan produced using PlanUp.

