

A two-story brick house with a dark tiled roof and a white gutter. The front facade features a large bay window on the ground floor and a smaller window on the first floor, both with white frames and light-colored curtains. The walls are made of red brick, with a white-painted section below the first-floor window. A black downpipe runs vertically along the side of the house. A white electrical box is mounted on the brick wall near the ground floor window. The house is set on a paved driveway, with a gravel garden area in front. A small tree and some shrubs are visible on the right side. The sky is blue with scattered white clouds.

EDEN MIDCALF
— SALES & LETTINGS —

£288,000
Lime Grove
Stourbridge, DY7 6JQ

PROPERTY SUMMARY

A well presented two bedroom semi-detached house enjoying views towards a green situated opposite and located within a popular address in historic Kinver village. The property is within easy reach of village amenities and offers a well proportioned and attractively appointed layout, plus off-road parking for two cars, a garage and a beautifully landscaped rear garden. Available with No Upward Chain.

2



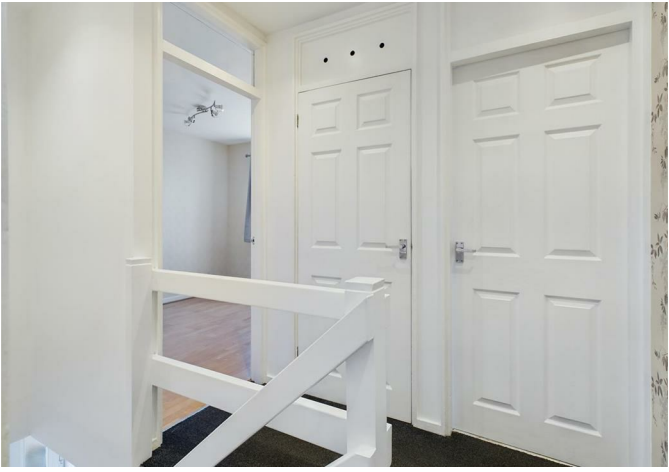
1



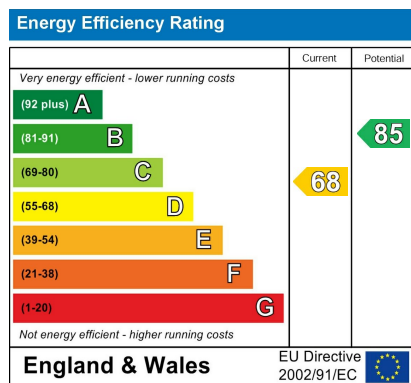
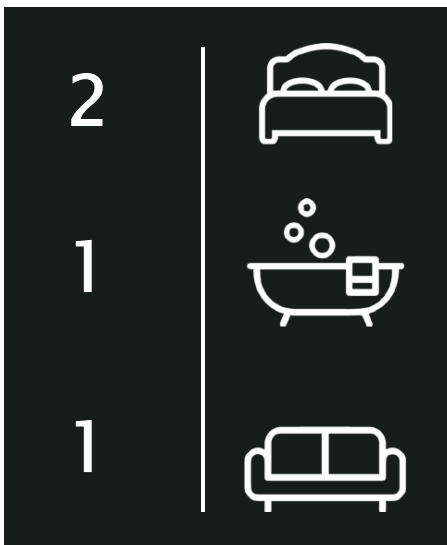
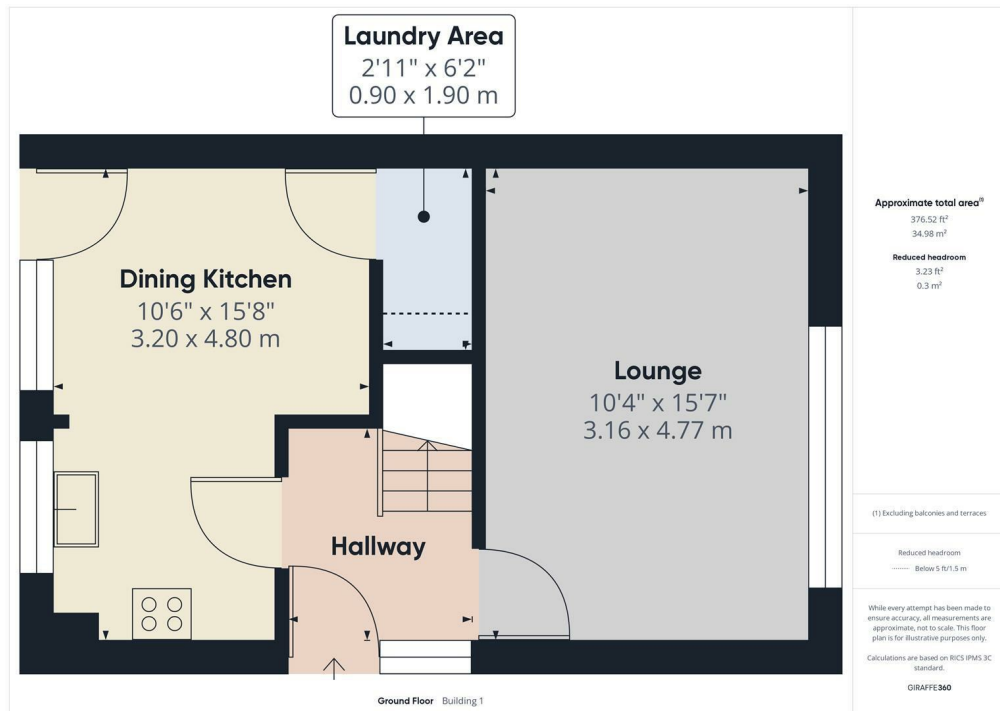
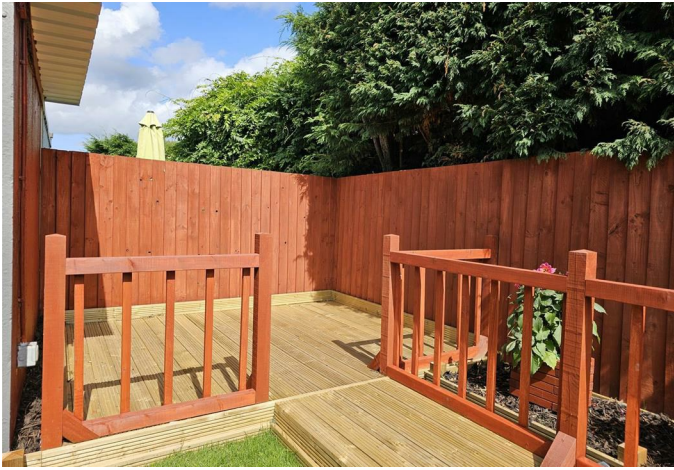
1











Agents Note: Whilst every care has been taken to prepare these particulars, they are for guidance purposes only. All measurements are approximate and are for general guidance purposes only and whilst every care has been taken to ensure their accuracy, they should not be relied upon and potential buyers/tenants are advised to recheck the measurements

EDEN MIDCALF

SALES & LETTINGS

28 High Street
Kinver
DY7 6HF

01384 878000

<https://www.edenmidcalf.co.uk/cor-us/>