

EDEN MIDCALF
— SALES & LETTINGS —



ASKING PRICE

£450,000

Austcliffe Road

Kidderminster, DY10 3UP

PROPERTY SUMMARY

A beautifully appointed, four bedroom, detached, dormer bungalow pleasantly situated in the sought after village of Cookley, close to beautiful open countryside. Offering a spacious and very versatile layout that is "ready to move into", the property includes two ground floor bedrooms, one of which enjoys an en-suite, together with two first floor bedrooms and a second bathroom. The property also includes off-road parking for four cars, a garage and an attractively laid out rear garden, with a summerhouse and a shed. Available with no upward chain.

4



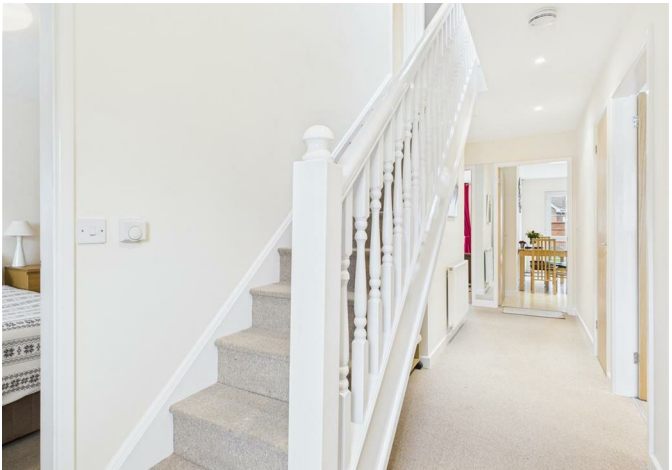
2



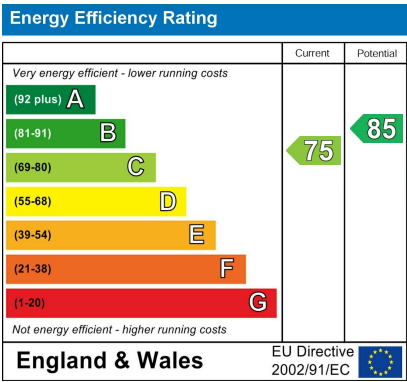
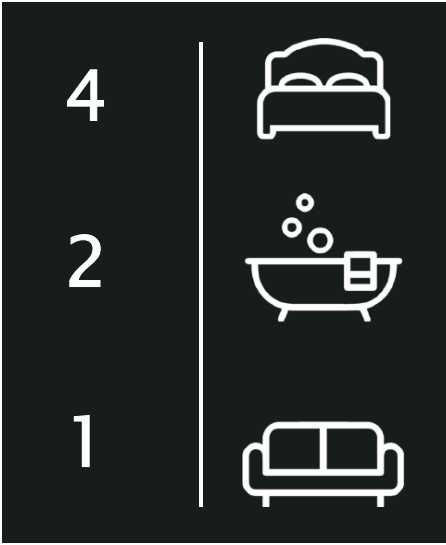
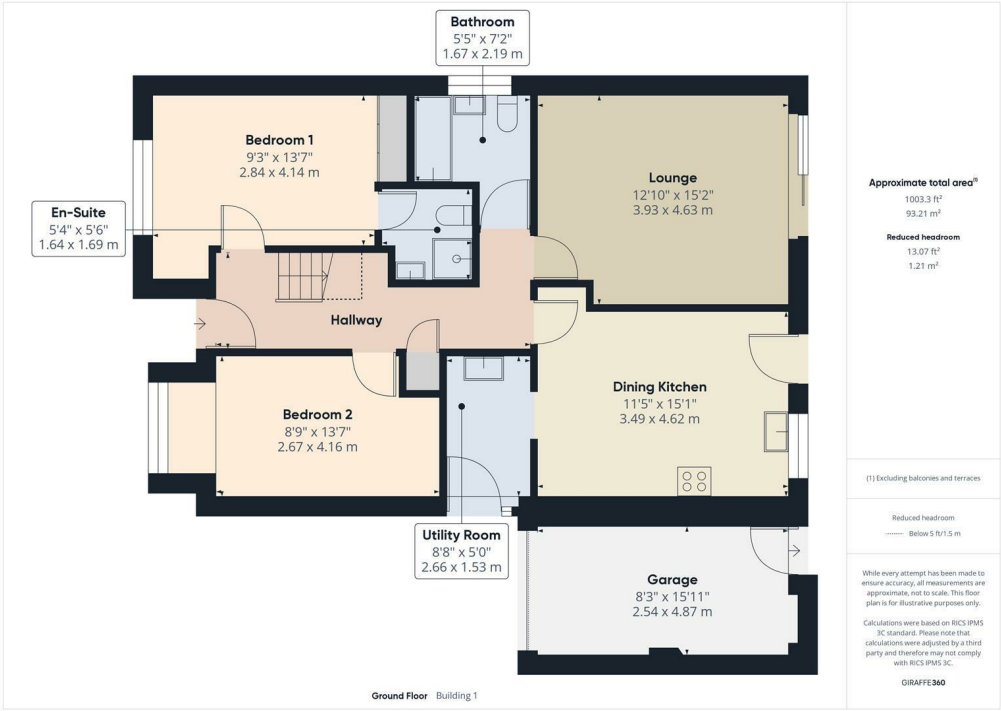
1











Agents Note: Whilst every care has been taken to prepare these particulars, they are for guidance purposes only. All measurements are approximate and are for general guidance purposes only and whilst every care has been taken to ensure their accuracy, they should not be relied upon and potential buyers/tenants are advised to recheck the measurements

28 High Street
Kinver
DY7 6HF

01384 878000

<https://www.edenmidcalf.co.uk/cor-us/>