

EDEN MIDCALF  
— SALES & LETTINGS —



OFFERS OVER  
**£220,000**  
**Walmsley Court**  
Kinver, DY7 6HG



## PROPERTY SUMMARY

An attractively presented one bedroom ground floor apartment within a sought after development in historic Kinver High Street. Conveniently located just a short walk from village amenities and offering thoughtfully planned accommodation that is "ready to move into", including a private courtyard garden and access to a secure gated residents carpark, which includes allocated off-road parking for one car and attractively maintained communal gardens, backing directly onto the River Stour. Available with no upward chain.

1



1

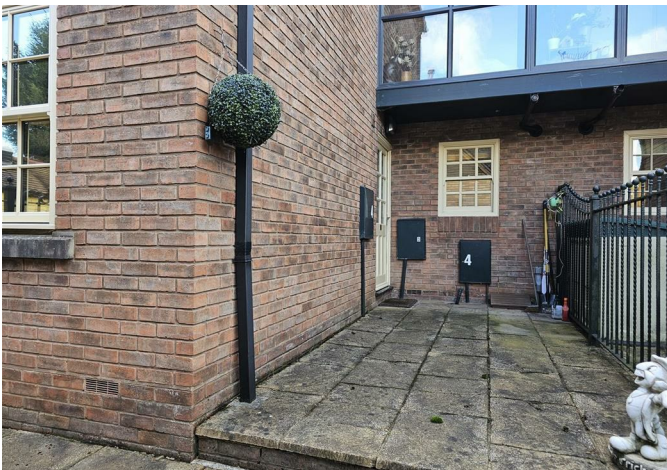
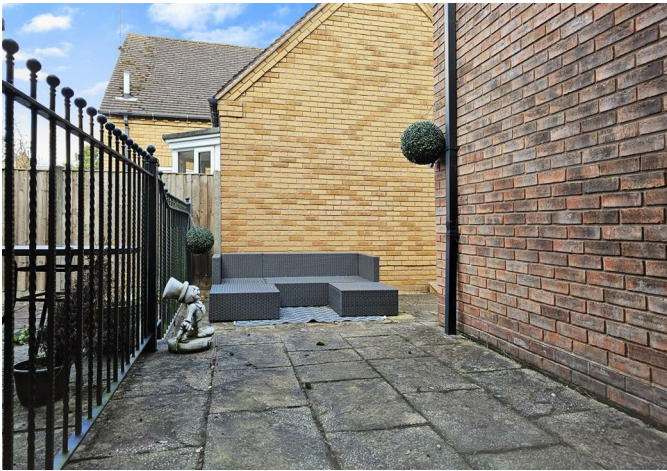


1





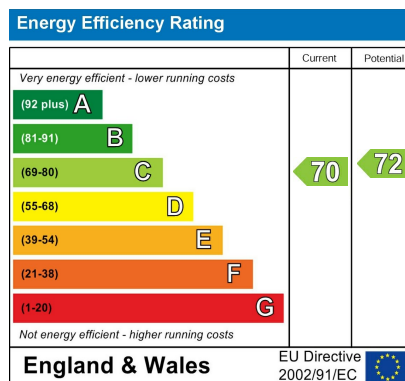
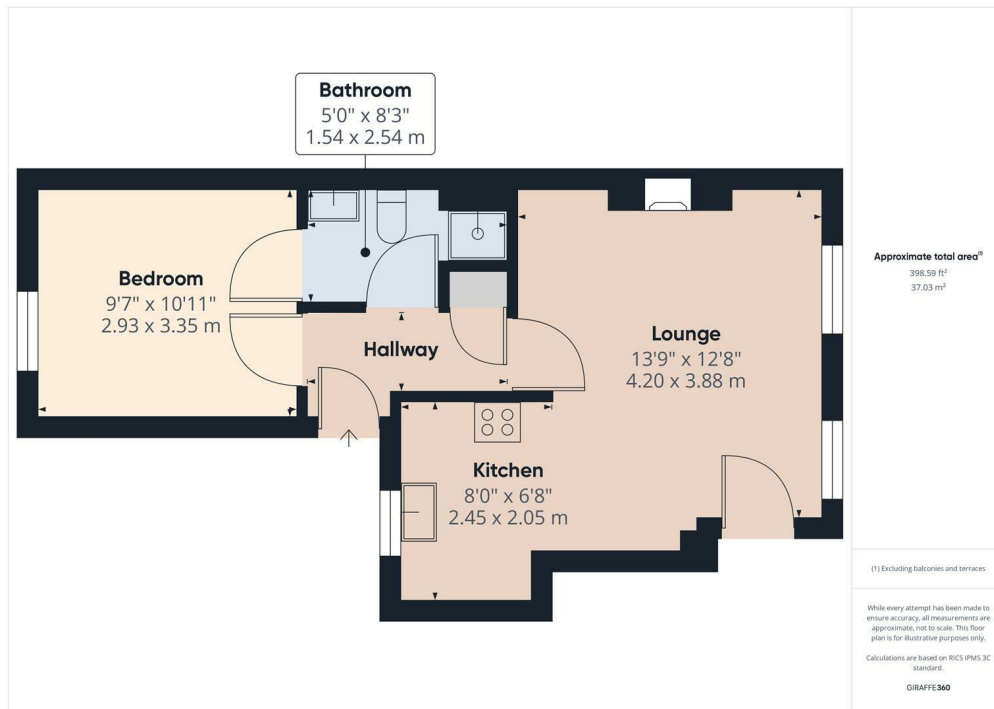












Agents Note: Whilst every care has been taken to prepare these particulars, they are for guidance purposes only. All measurements are approximate and are for general guidance purposes only and whilst every care has been taken to ensure their accuracy, they should not be relied upon and potential buyers/tenants are advised to recheck the measurements

28 High Street  
Kinver  
DY7 6HF

01384 878000  
<https://www.edenmidcalf.co.uk/cor-us/>