

EDEN MIDCALF
— SALES & LETTINGS —

£300,000
Comber Grove
Kinver, DY7 6EY

PROPERTY SUMMARY

A large two bedroom first floor apartment enjoying delightful panoramic views over historic Kinver village and the surrounding countryside. Located within the highly sought after Kinver Mount development, which is within easy reach of village amenities, the property offers a generous layout including two double bedrooms, the master of which enjoys an en-suite shower room. The building includes a lift to the upper floors and is set within beautifully maintained gardens/grounds, including allocated off-road parking for one car within a gated resident's car park.

2



2



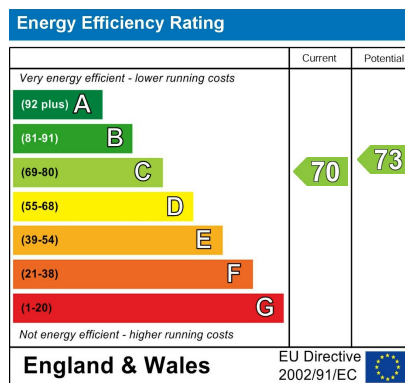
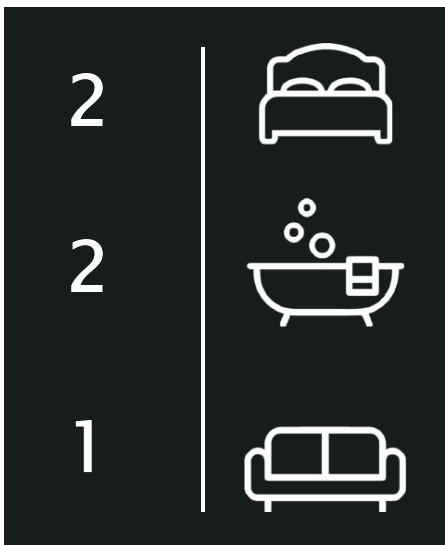
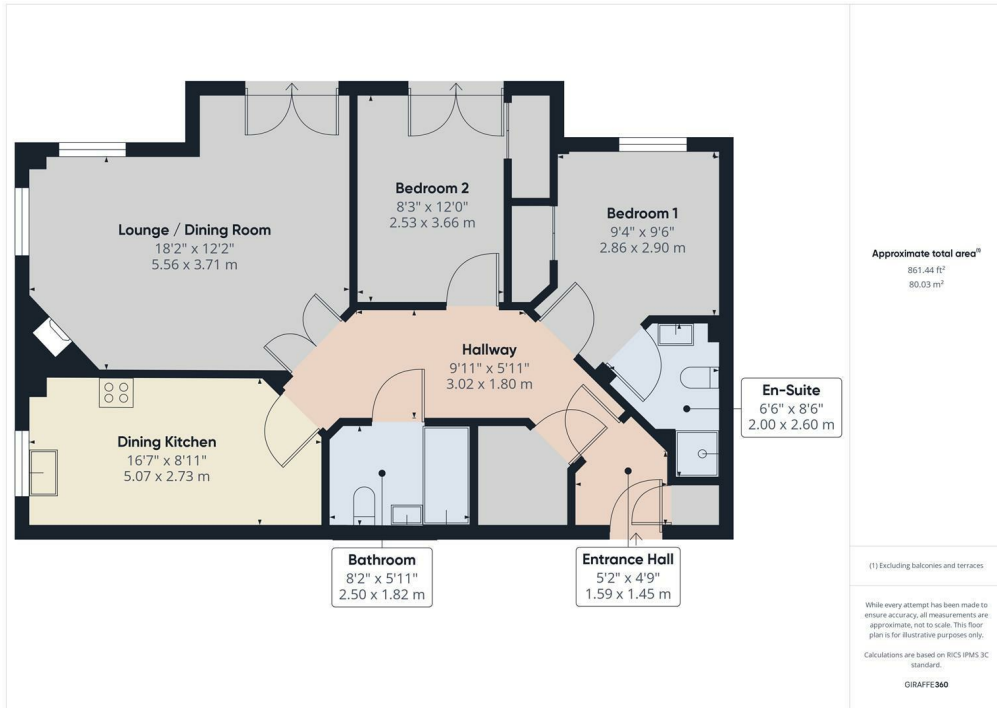
1











Agents Note: Whilst every care has been taken to prepare these particulars, they are for guidance purposes only. All measurements are approximate and are for general guidance purposes only and whilst every care has been taken to ensure their accuracy, they should not be relied upon and potential buyers/tenants are advised to recheck the measurements

EDEN MIDCALF
SALES & LETTINGS

28 High Street
Kinver
DY7 6HF

01384 878000
<https://www.edenmidcalf.co.uk/cor-us/>