

EDEN MIDCALF  
— SALES & LETTINGS —

£349,950  
Hyde Lane  
Stourbridge, DY7 6AF



## PROPERTY SUMMARY

An outwardly deceptive traditional semi-detached family house located with this very popular address in historic Kinver village. Backing onto school playing fields and offering a generously proportioned and well appointed layout, plus off-road parking and an attractively landscaped rear garden.

3



1



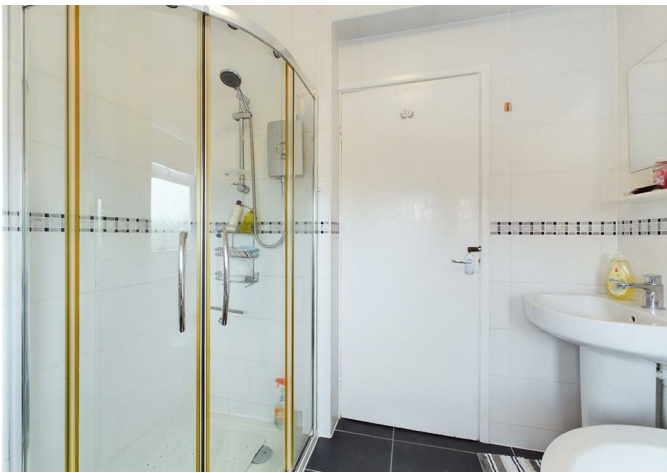
1







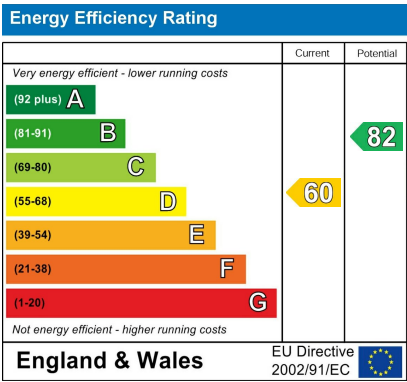
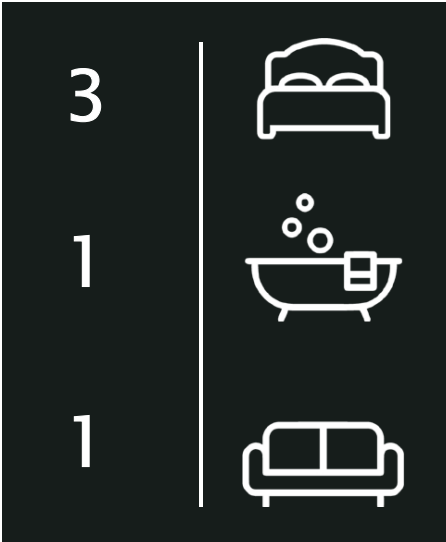












Agents Note: Whilst every care has been taken to prepare these particulars, they are for guidance purposes only. All measurements are approximate and are for general guidance purposes only and whilst every care has been taken to ensure their accuracy, they should not be relied upon and potential buyers/tenants are advised to recheck the measurements

28 High Street  
Kinver  
DY7 6HF

01384 878000

<https://www.edenmidcalf.co.uk/cor-us/>