



33 Newbery Avenue, Long Eaton

Offers in Region of **£418,000**



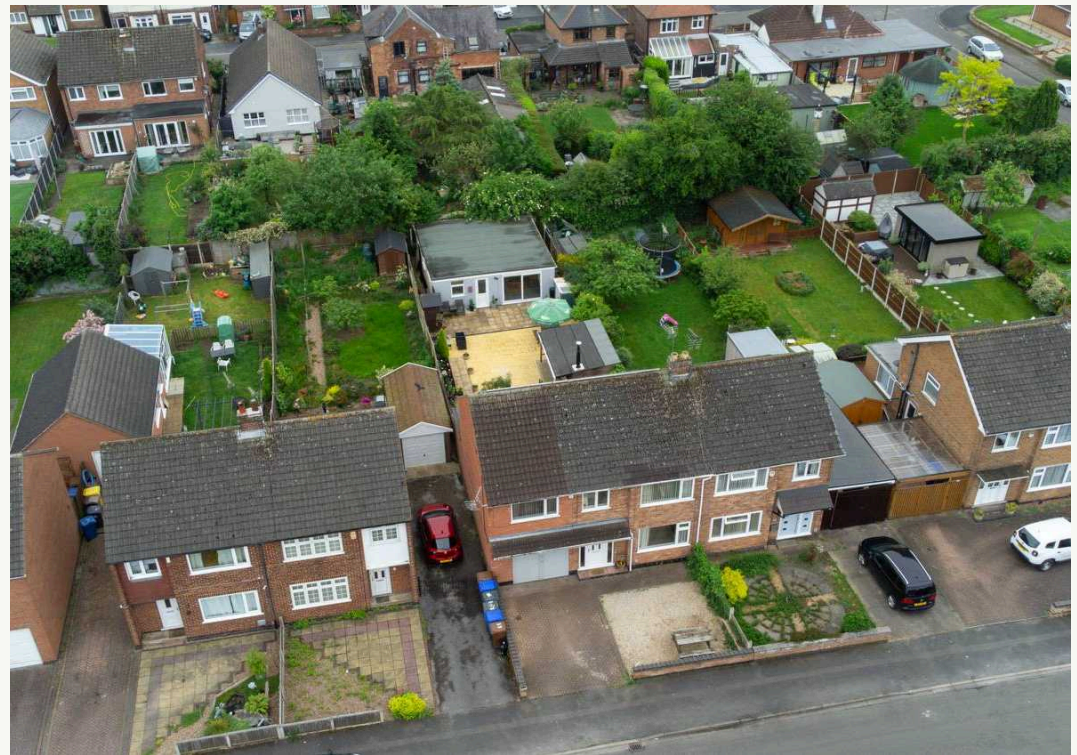
33 Newbery Avenue

Long Eaton, Nottingham

Hortons are delighted to bring to the market this exceptional 6 bedroom semi-detached house presents a unique opportunity for a family seeking versatility and comfort. Boasting an extended FOUR bedroom family home along with a TWO bedroom self-contained annexe, this property is ideal for accommodating elderly parents or older children desiring their own space. Set on a generous plot, the residence features a private south-facing garden, three reception rooms in the main house, and an additional reception room in the annexe. With a hardstanding driveway for three cars, the home offers convenience and functionality. The principal bedroom includes an ensuite, with a family bathroom providing further practicality. Enjoy the added feature of a fully equipped bar in the garden, perfect for hosting gatherings. Sold with no upward chain, this property promises a smooth transition for discerning buyers seeking a distinguished living space.

Step outside and discover the enchanting outside space of this property. The rear garden beckons with its tranquil south-facing orientation. A raised patio area greets you, providing a lovely spot for outdoor seating. The artificial lawn, adorned with a wooden balustrade, leads to a paved area through shrubbery and potted plants, offering a burst of colour without the need for high maintenance. But the real star is the fully functioning bar, ready for entertaining with its sophisticated design. Complete with an upholstered seating area, twin flue log burner, cooling appliances, power points, and a smart TV, this outdoor bar ensures gatherings are elevated to a new level.

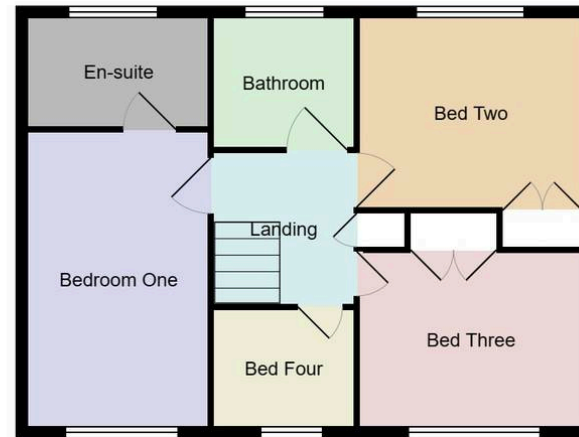
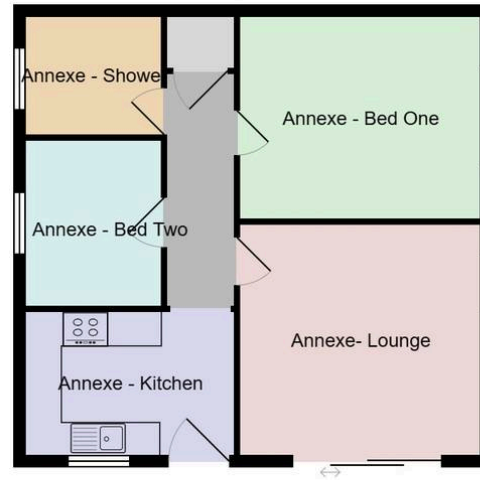














Nicole Beales - Hortons

07561 100839 · nicole@hortons.co · hortons.co/partners/nicole-beales/