



1 Elveden Drive, Ilkeston

Guide Price **£299,950**

 **HORTONS**

1 Elveden Drive

Ilkeston, Ilkeston

Hortons are delighted to bring to the market this stunning extended detached family home.

Occupying an enviable position and just a stone's throw away from Shipley Park and The Nutbrook Trail. Who wouldn't want these wonderful walks right on your doorstep!

This family home is the fulcrum of family life with open plan kitchen diner living forming part of the extension, beautifully designed which exudes a sense of spaciousness and modernity. This really is a wonderful family home with a private garden to the rear.

In brief this home comprises; Entrance Hallway, cloaks/ wc, integral garage / store, utility room, Breakfast kitchen open plan / dining room, sitting room, separate lounge, stairs ascending to first floor, Three great size bedrooms and family bathroom. To the Outside a low maintenance front with parking for several cars and rear garden beautifully landscaped with a high degree of privacy. Potential to extend upstairs STPP if you so wish.

Location

A sought after popular location in Shipley View with stunning countryside walks at Shipley Park and The Nutbrook Trail right on your doorstep, why not stop off at Nutbrook coffee shop while enjoying a beautiful walk too. A good selection of local pubs and shops with the high street 5 minutes drive away, a range of primary and junior schools, superstores and bus links just walking distance away. Fantastic for commuters with great access to A52 and M1, The midlands motorway network is just a short drive

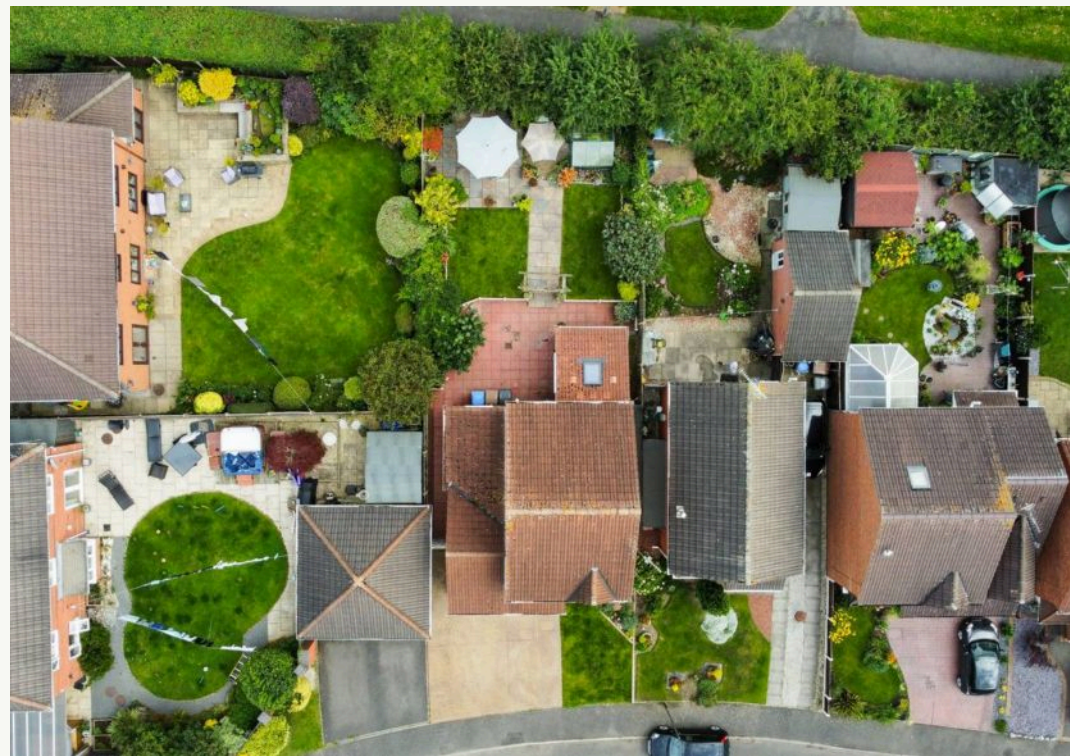
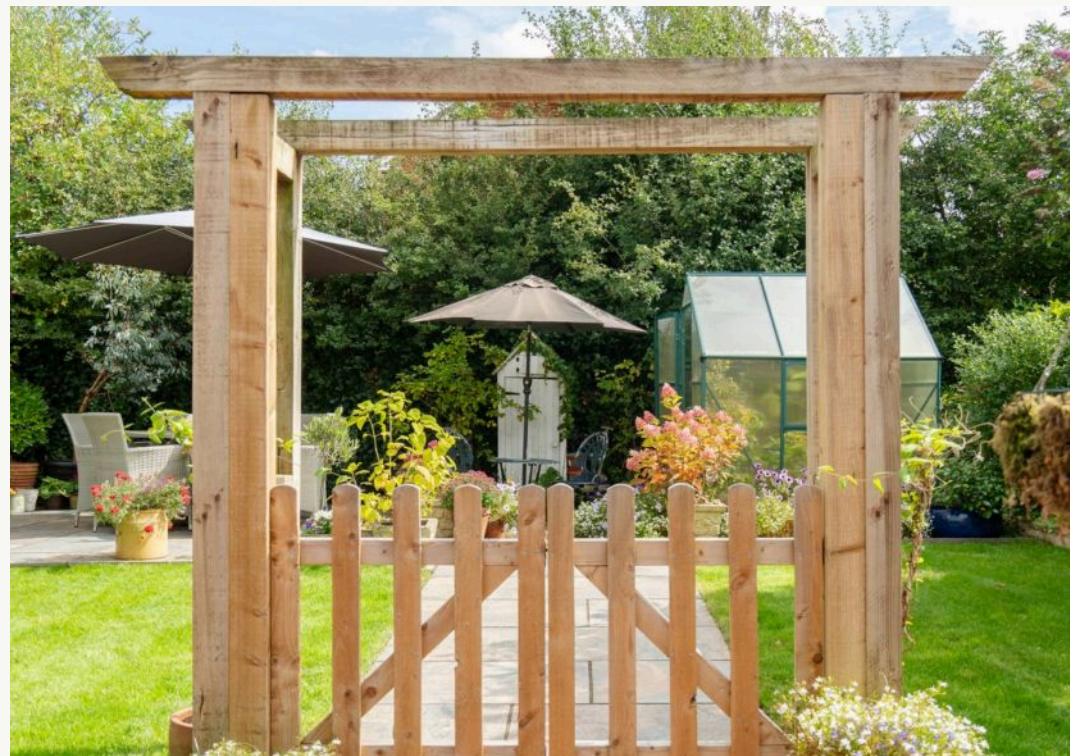


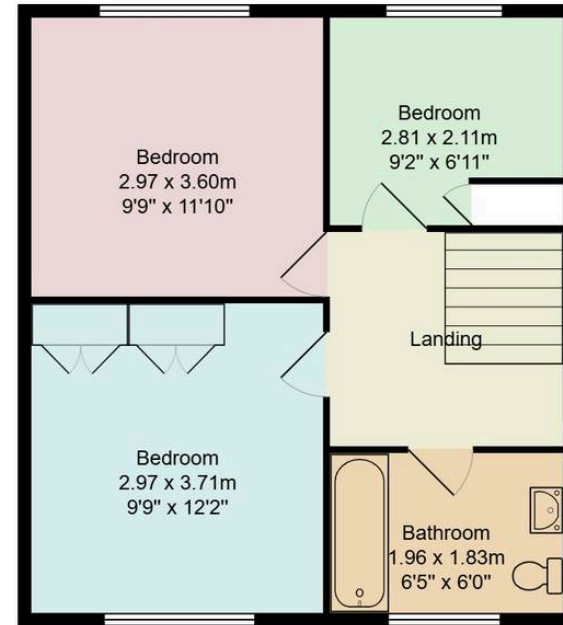
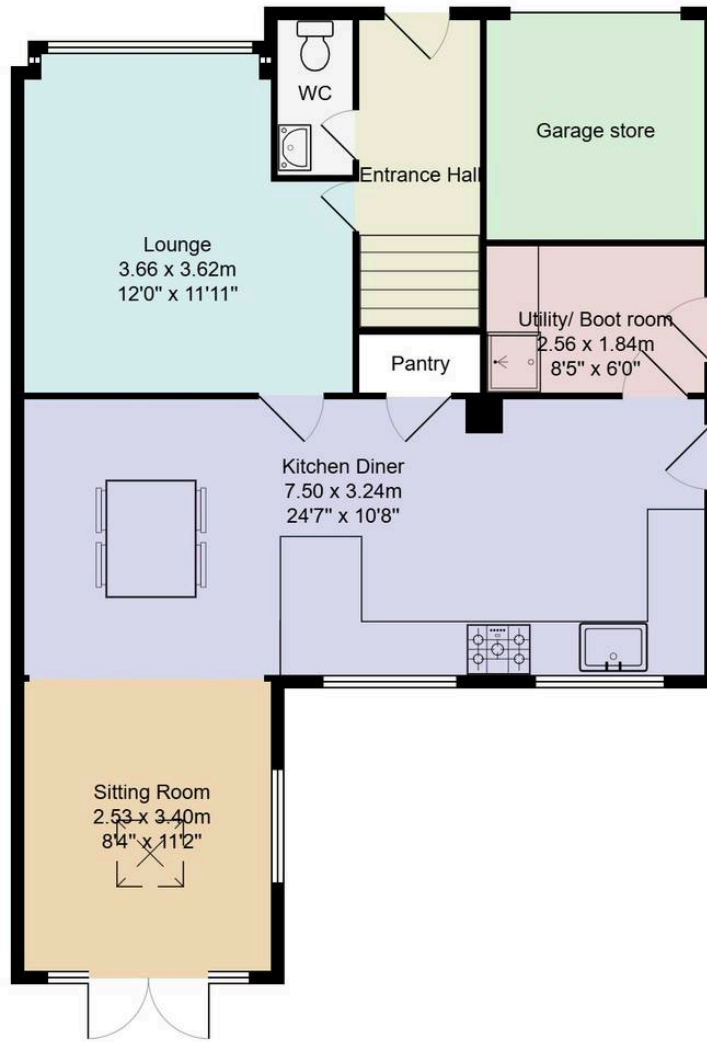












All measurements are approximate and for display purposes only.



Nicole Beales - Hortons

Derbyshire's personal agent

07561 100839 · nicole@hortons.co · hortons.co/partners/nicole-beales/