

15 Pike Way

North Weald, Epping

Council Tax band: E

Tenure: Freehold

- Beautiful six bedroom home
- Driveway
- Primary suite with ensuite shower & walk-in wardrobe
- Utility Room
- Spacious private garden
- Short drive to Epping & the M11



Porch & Hallway

Lounge

17' 8" x 14' 5" (5.38m x 4.40m)

Kitchen / Family Room

17' 8" x 18' 1" (5.38m x 5.50m)

Dining Area

9' 0" x 2' 6" (2.74m x 0.77m)

WC

Primary Bedroom

17' 8" x 13' 7" (5.38m x 4.14m)

Walk in wardrobe

8' 10" x 7' 1" (2.68m x 2.16m)

Ensuite Shower Room

8' 10" x 6' 4" (2.68m x 1.94m)

Bedroom

17' 5" x 9' 11" (5.32m x 3.01m)

Bedroom

11' 5" x 14' 7" (3.47m x 4.44m)

Bedroom

9' 1" x 10' 0" (2.76m x 3.04m)

Bathroom

6' 0" x 8' 9" (1.83m x 2.67m)

Second floor landing

7' 6" x 11' 7" (2.29m x 3.52m)

Snug / Bedroom

17' 6" x 11' 7" (5.33m x 3.54m)

Bedroom

17' 4" x 9' 9" (5.28m x 2.97m)

Shower Room

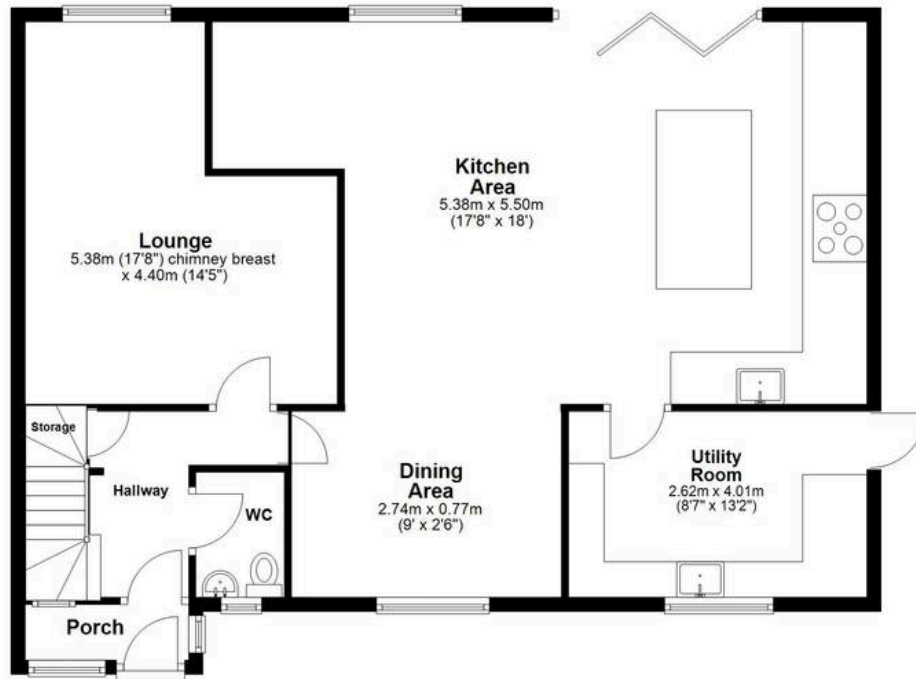
5' 4" x 11' 7" (1.63m x 3.52m)





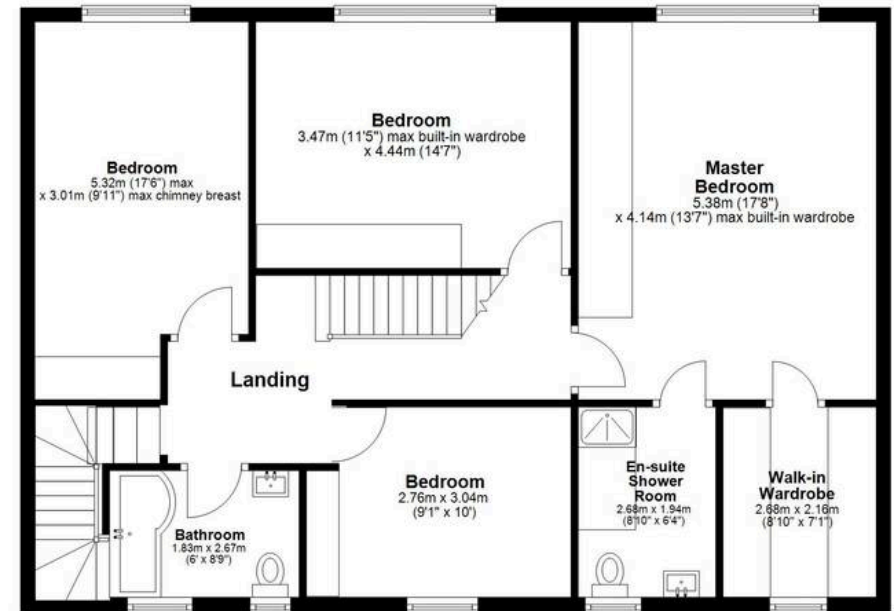
Ground Floor

Approx. 94.8 sq. metres (1020.6 sq. feet)



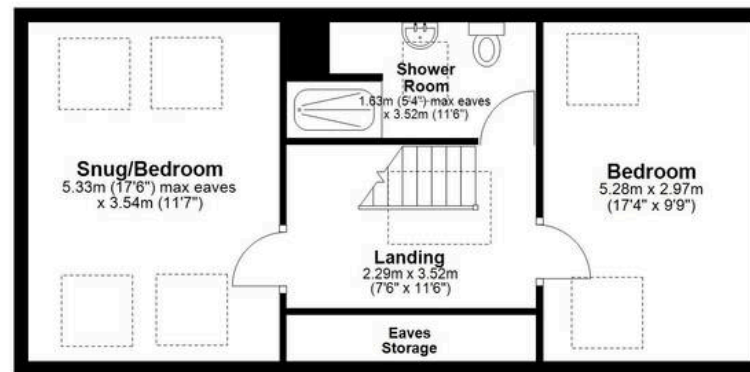
First Floor

Approx. 101.0 sq. metres (1086.9 sq. feet)



Second Floor

Approx. 52.3 sq. metres (562.8 sq. feet)



Total area: approx. 248.1 sq. metres (2670.4 sq. feet)

THE FLOORPLAN IS FOR ILLUSTRATIVE PURPOSES ONLY AND IS NOT TO SCALE. Measurements and features are approximate and may differ from the actual property. Verify all details independently; no liability is accepted for errors or omissions.
Plan produced using PlanUp.