

22 Pike Way

North Weald, Epping

Council Tax band: F

Tenure: Freehold

- AVAILABLE MID DECEMBER
- SIX BEDROOMS
- SEPARATE UTILITY ROOM
- LARGE KITCHEN/DINER
- LARGE LANDSPACED REAR GARDEN
- GYM AREA
- THREE BATHROOMS



Front Door

Entrance Hallway

Downstairs Wc

Study/Reception

14' 0" x 11' 11" (4.26m x 3.63m)

Living Room

18' 0" x 11' 7" (5.49m x 3.52m)

Kitchen/Family/Dining Room

33' 0" x 22' 10" (10.06m x 6.96m)

TV/Playroom

11' 7" x 10' 4" (3.52m x 3.16m)

Utility Room

22' 3" x 6' 11" (6.79m x 2.11m)

Gym

17' 6" x 11' 4" (5.33m x 3.45m)

Garage

11' 9" x 11' 4" (3.57m x 3.45m)

Stairs Leading To

Bedroom One

17' 10" x 11' 9" (5.44m x 3.58m)

En-Suite Shower Room

6' 6" x 6' 0" (1.97m x 1.82m)

Bedroom Two

13' 5" x 11' 11" (4.10m x 3.64m)

Bedroom Three

14' 10" x 11' 6" (4.51m x 3.51m)

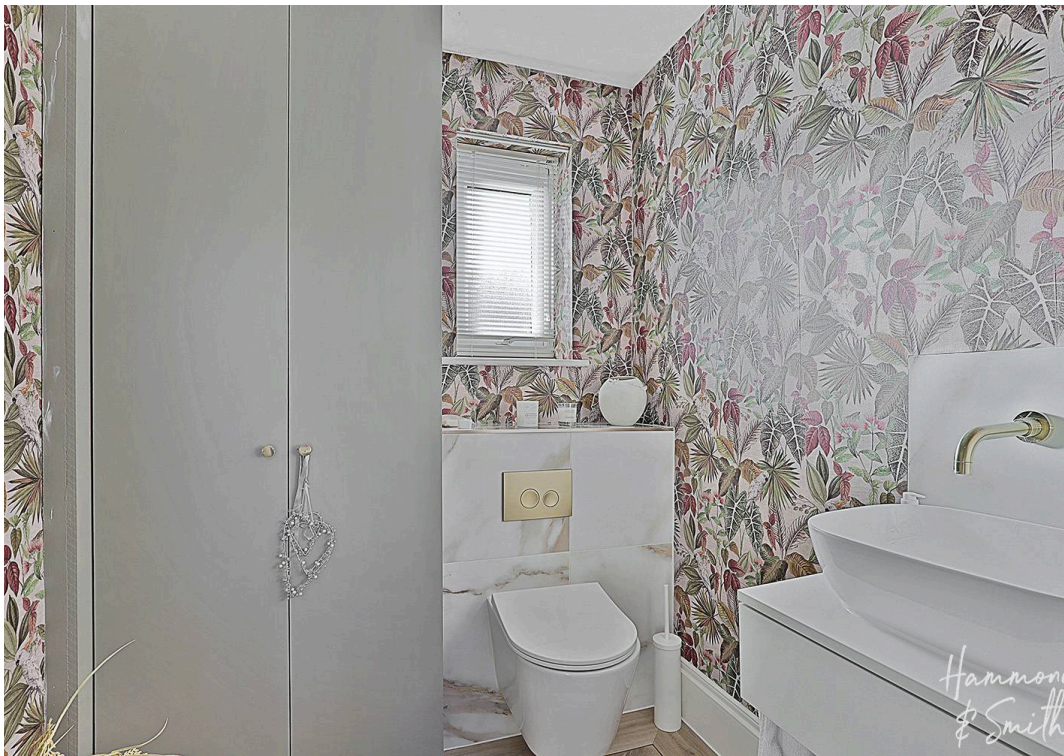
Bedroom Four

12' 8" x 8' 4" (3.87m x 2.53m)

Family Bathroom

8' 7" x 6' 0" (2.62m x 1.83m)

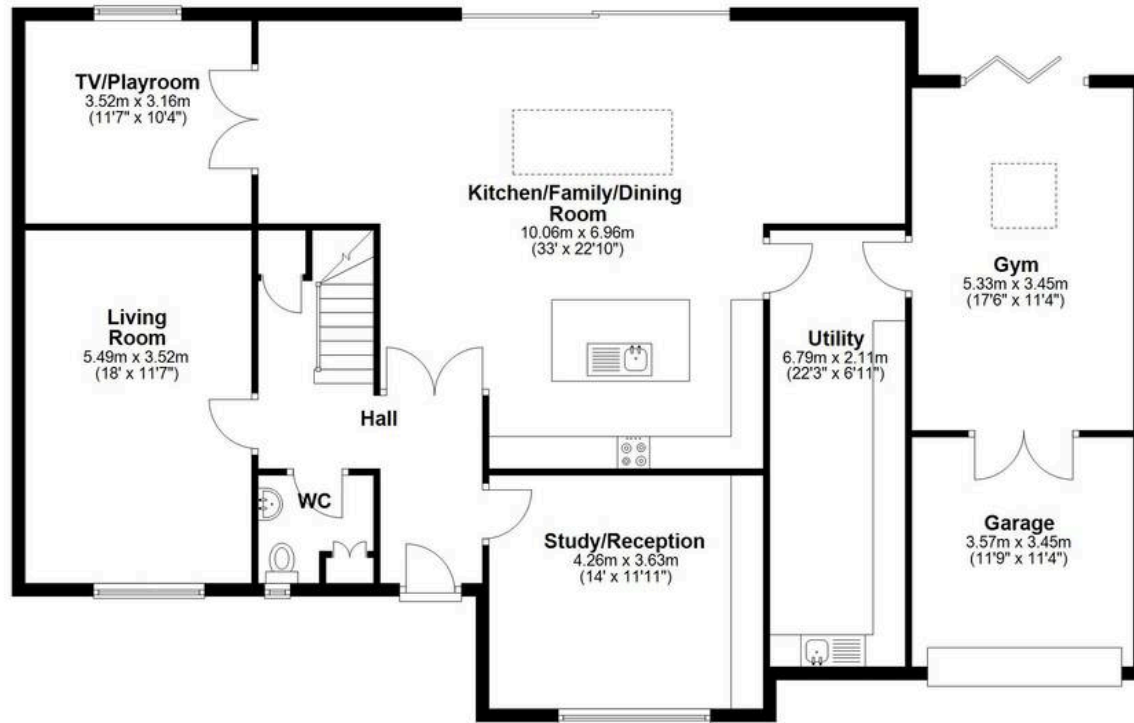






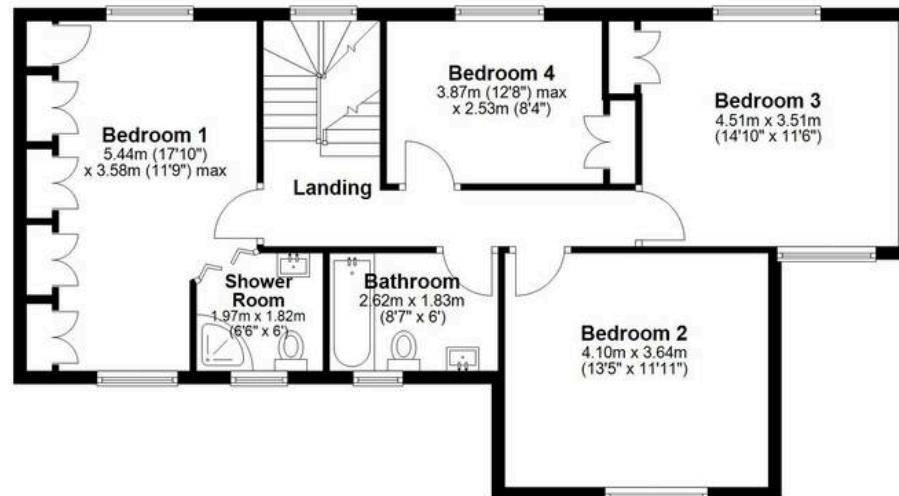
Ground Floor

Approx. 163.0 sq. metres (1754.0 sq. feet)



First Floor

Approx. 77.2 sq. metres (831.2 sq. feet)



Main area: Approx. 286.2 sq. metres (3080.6 sq. feet)

Plus eaves, approx. 14.6 sq. metres (157.4 sq. feet)

Second Floor

Main area: approx. 46.0 sq. metres (495.4 sq. feet)

Plus eaves, approx. 14.6 sq. metres (157.4 sq. feet)

