

25 Tower Road

Epping, Essex

Offers Over £750,000

Council Tax band: E

Tenure: Freehold

- Detached
- Three double bedrooms
- Driveway
- Ensuite shower room
- Private rear garden
- Short walk to Epping station and shops



Lounge

16' 11" x 22' 1" (5.16m x 6.73m)

Kitchen

7' 9" x 20' 10" (2.37m x 6.34m)

Dining Room

7' 4" x 19' 6" (2.24m x 5.94m)

Bedroom

11' 3" x 11' 0" (3.42m x 3.36m)

Dressing Room**Bedroom**

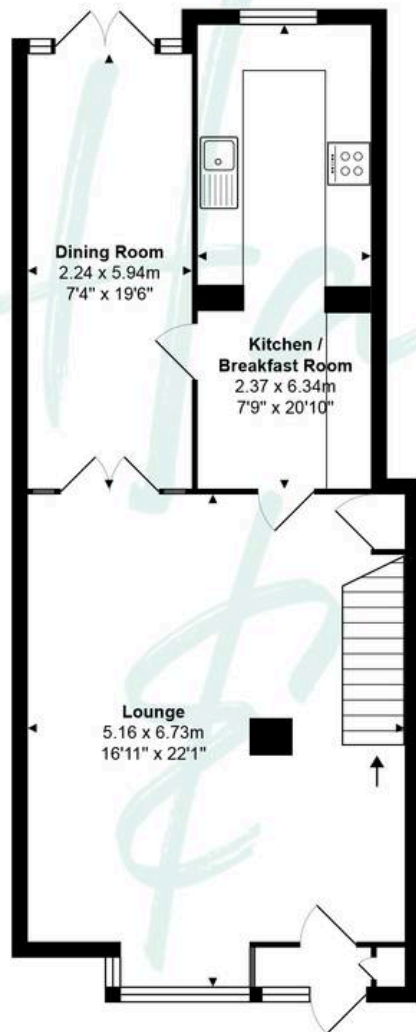
11' 3" x 8' 10" (3.42m x 2.69m)

Shower Room**Primary Bedroom**

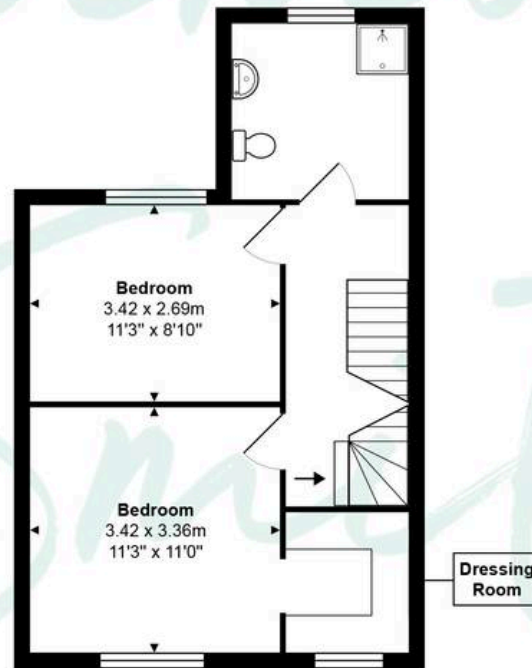
12' 9" x 13' 3" (3.88m x 4.03m)

Ensuite Shower Room





Ground Floor



First Floor



Second Floor

Total Area: approx. 135.9 m² ... 1463 ft²

THE FLOORPLAN IS FOR ILLUSTRATIVE PURPOSES ONLY AND IS NOT TO SCALE.
Measurements and features are approximate and may differ from the actual property. Verify all details independently; no liability is accepted for errors or omissions.

Property marketing provided by www.fotomarketing.co.uk