

33 Charles Street

Epping, Essex

Guide Price £525,000

Nestled in sought-after Charles Street sits this gorgeous two bedroom home. Just a short walk to Epping tube and high street it's the perfect find for first-time buyers or commuters alike. One not to miss.

Council Tax band: D

Tenure: Freehold

- Short walk to Epping tube & high street
- Driveway
- Two double bedrooms
- Ideal first time buy
- Close to Ivy Chimneys Primary School



Porch

Lounge

11' 9" x 12' 0" (3.59m x 3.66m)

Dining Room

15' 5" x 9' 0" (4.70m x 2.74m)

Kitchen

15' 5" x 8' 11" (4.70m x 2.73m)

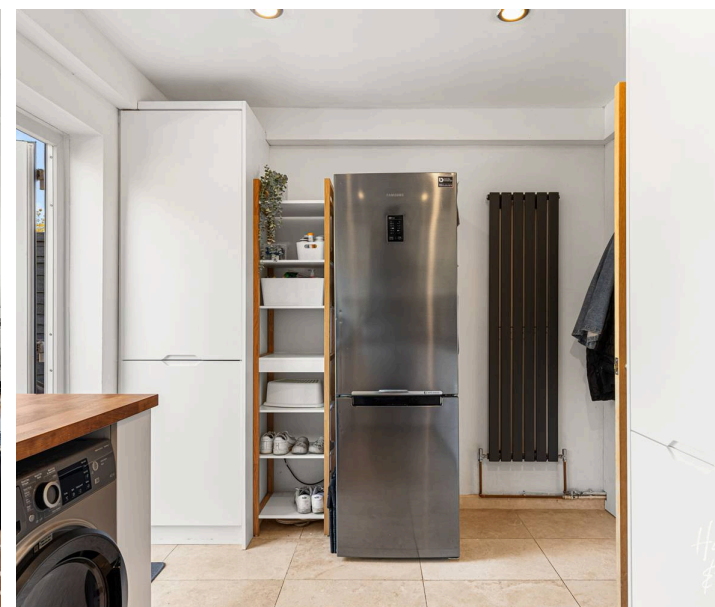
Bedroom

11' 11" x 11' 9" (3.64m x 3.57m)

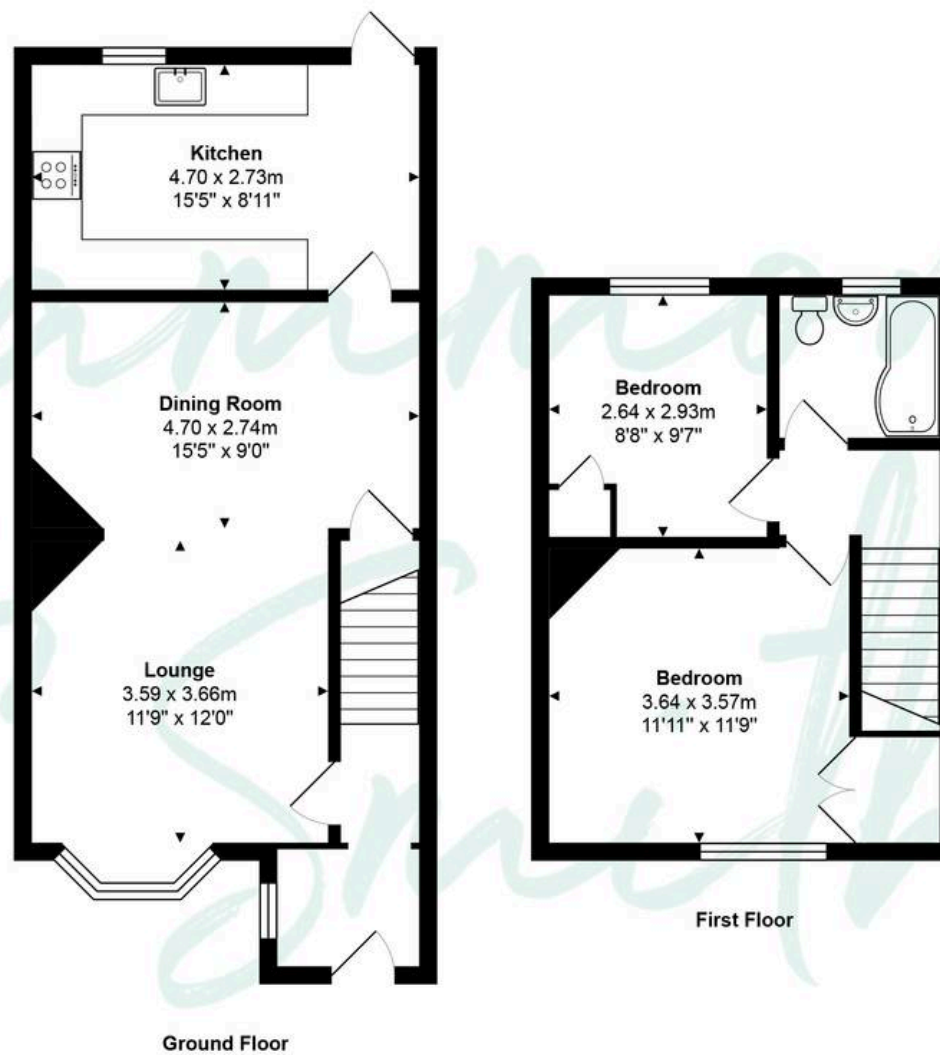
Bedroom

8' 8" x 9' 7" (2.64m x 2.93m)

Bathroom







Total Area: approx. 79.1 m² ... 851 ft²

THE FLOORPLAN IS FOR ILLUSTRATIVE PURPOSES ONLY AND IS NOT TO SCALE.
Measurements and features are approximate and may differ from the actual property. Verify all details independently; no liability is accepted for errors or omissions.

Property marketing provided by www.fotomarketing.co.uk