

19a Church Hill

Epping, Essex

Guide Price £800,000

Council Tax band: TBD

Tenure: Freehold

- CHAIN FREE
- PRIME CENTRAL EPPING LOCATION
- OFF ROAD PARKING
- THREE BATHROOMS
- WALKING DISTANCE TO HIGH STREET & STATION
- LOW MAINTENANCE SOUTHERLY FACING GARDEN



Front Door

Entrance Hall

Downstairs WC

Living Room

15' 1" x 12' 8" (4.60m x 3.86m)

Kitchen/ Dining Room

20' 8" x 19' 11" (6.31m x 6.06m)

Stairs Leading To

Landing Area

Bedroom One

14' 11" x 12' 11" (4.54m x 3.93m)

En - Suite Shower Room

8' 2" x 4' 0" (2.49m x 1.22m)

Bedroom Three

10' 11" x 9' 0" (3.32m x 2.74m)

Family Bathroom

7' 6" x 7' 2" (2.28m x 2.19m)

Stairs Leading To

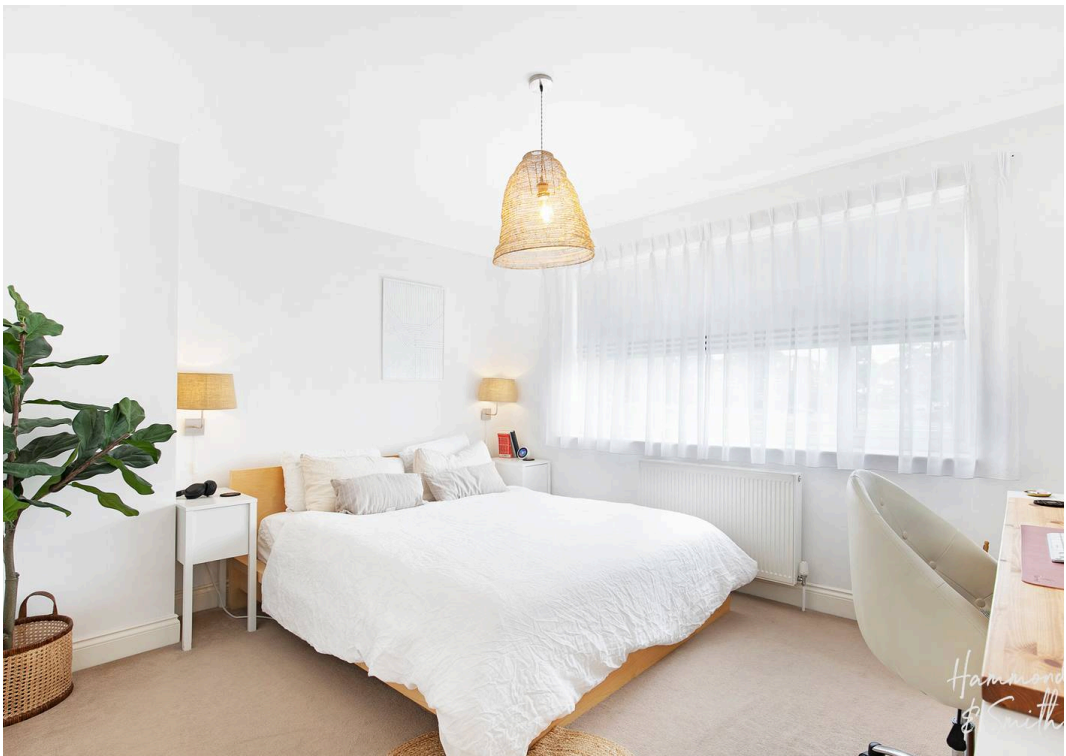
Bedroom Two

17' 11" x 12' 4" (5.46m x 3.76m)

En - Suite Shower Room

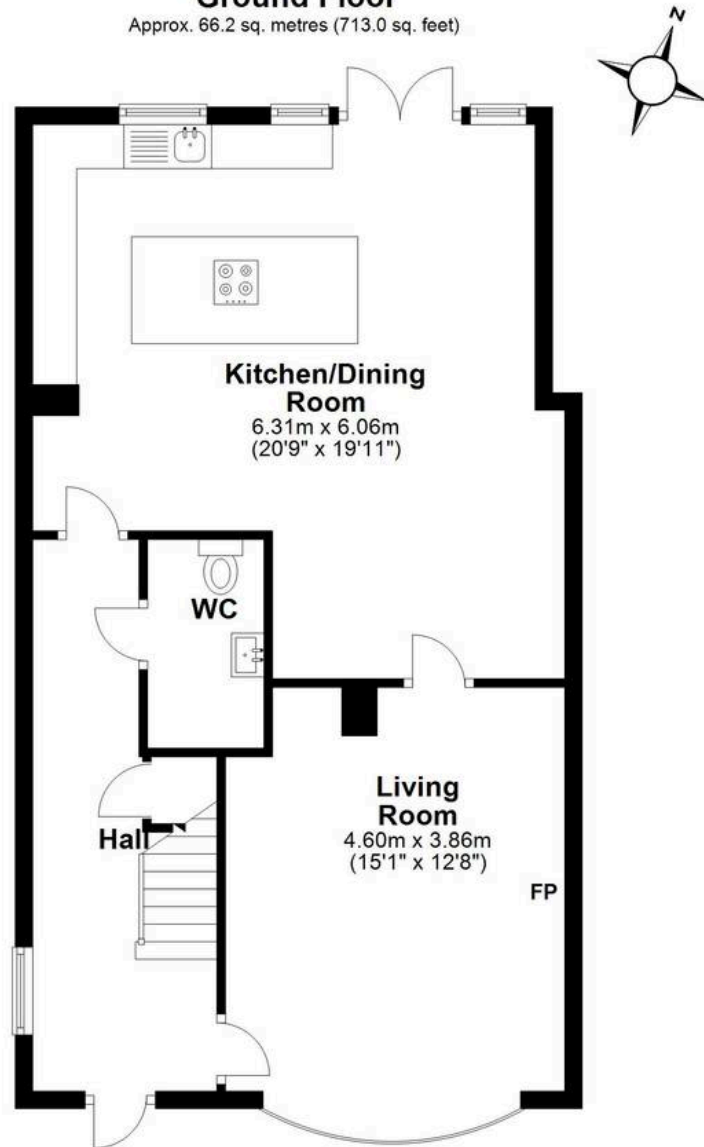
11' 9" x 6' 8" (3.58m x 2.03m)





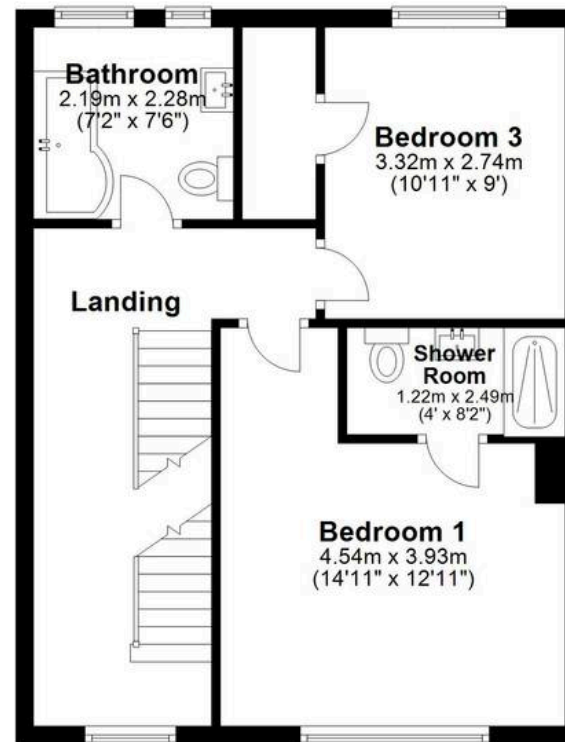
Ground Floor

Approx. 66.2 sq. metres (713.0 sq. feet)



First Floor

Approx. 48.3 sq. metres (519.9 sq. feet)



Second Floor

Approx. 24.6 sq. metres (264.8 sq. feet)



Total area: approx. 139.1 sq. metres (1497.7 sq. feet)