

21 Nicholl Road

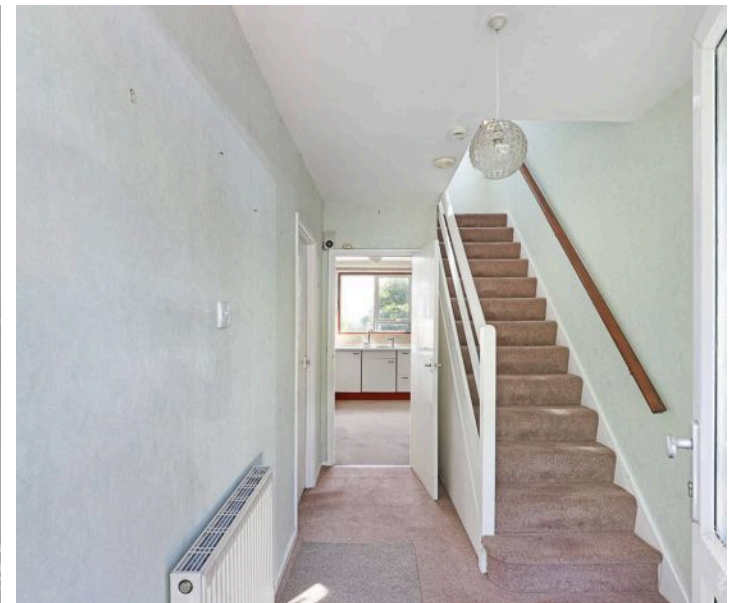
Epping, Essex

Guide Price £650,000

Council Tax band: E

Tenure: Freehold

- Chain Free
- Superb scope to modernise
- Driveway & Garage
- Steps away from Epping Tube and High Street
- Utility Room
- Downstairs WC



Hallway

Lounge / Dining Room

27' 3" x 13' 0" (8.30m x 3.97m)

Kitchen

12' 3" x 9' 1" (3.73m x 2.77m)

Utility Room

13' 7" x 7' 9" (4.14m x 2.35m)

WC

Bedroom

14' 3" x 11' 10" (4.34m x 3.60m)

Bedroom

11' 3" x 11' 3" (3.42m x 3.42m)

Bedroom

7' 3" x 5' 9" (2.20m x 1.76m)

Bathroom

8' 3" x 8' 2" (2.51m x 2.49m)

Garage

17' 7" x 7' 9" (5.35m x 2.35m)

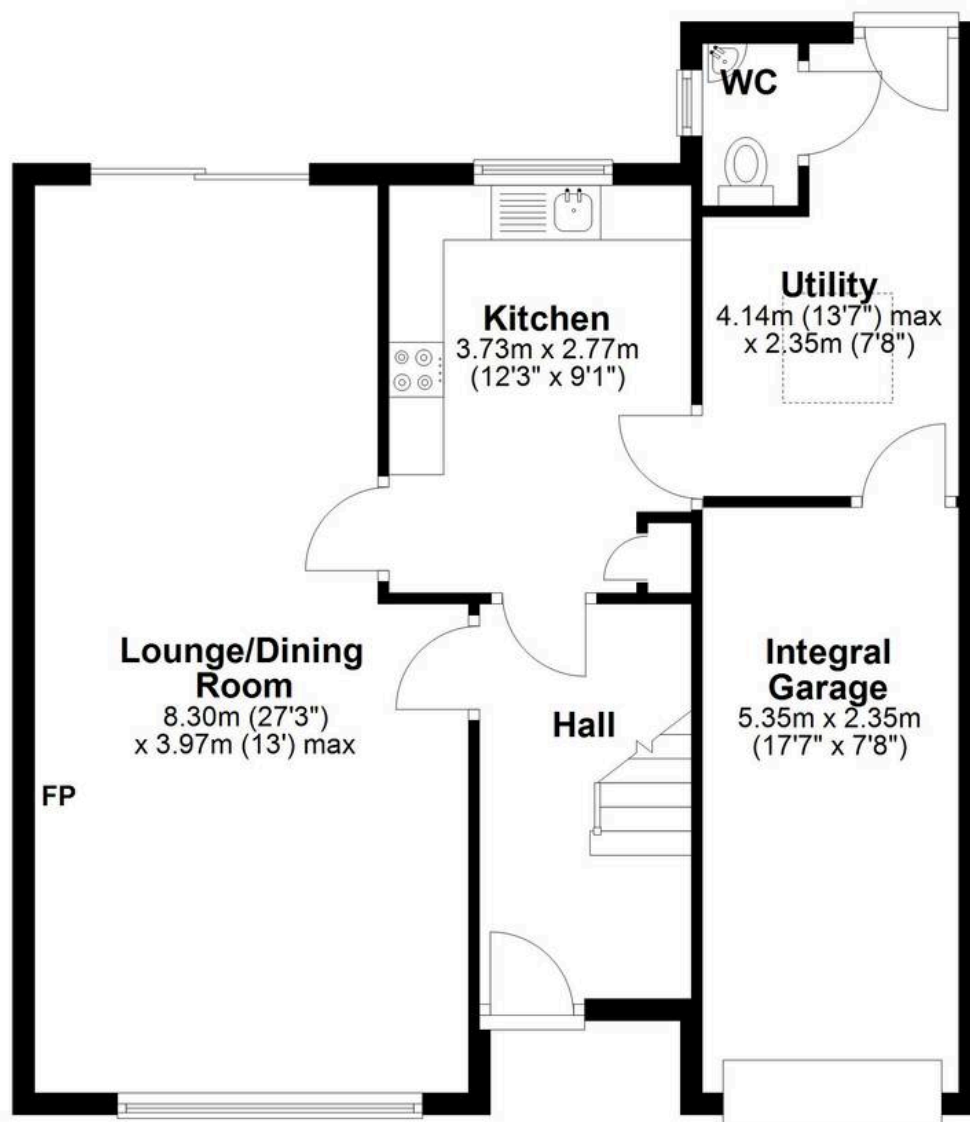






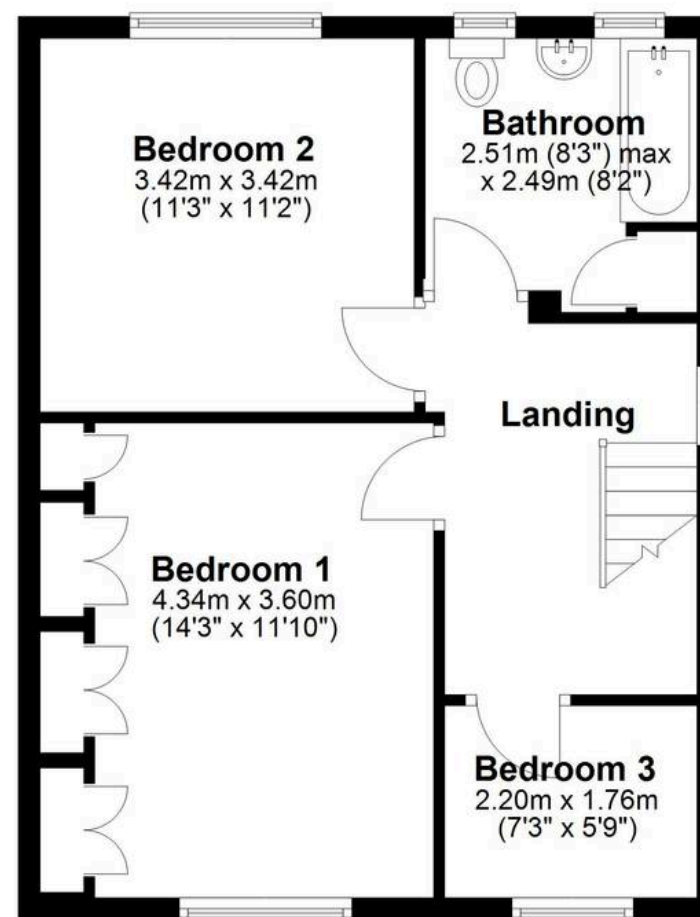
Ground Floor

Approx. 71.3 sq. metres (767.5 sq. feet)



First Floor

Approx. 47.0 sq. metres (505.8 sq. feet)



Total area: approx. 118.3 sq. metres (1273.3 sq. feet)