

# 20 Rayfield

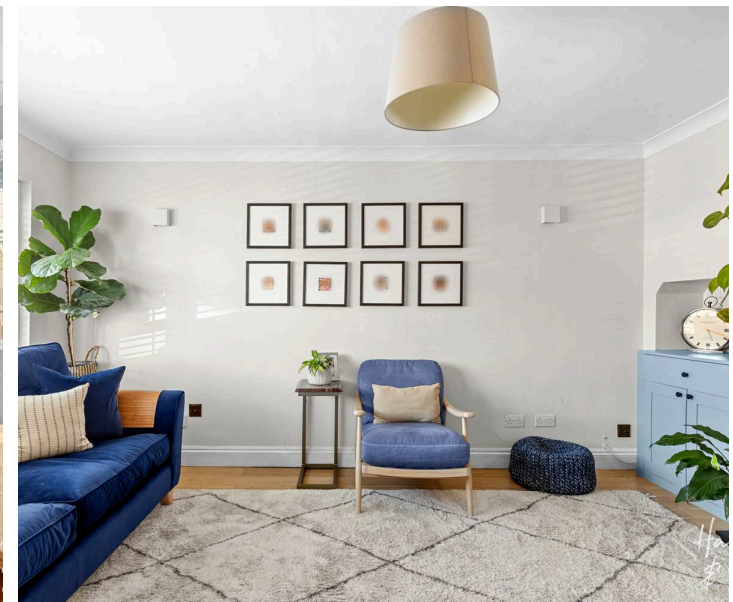
Epping, Essex

Offers Over £550,000

Council Tax band: D

Tenure: Freehold

- Driveway
- Neutral interiors
- Three good sized bedrooms
- Spacious garden with side access
- Short walk to the station and high street
- Close to green space





## Hallway

## Living Room

10' 11" x 16' 5" (3.34m x 5.01m)

## Kitchen

16' 9" x 10' 4" (5.10m x 3.14m)

## Bedroom

10' 6" x 13' 11" (3.21m x 4.25m)

## Bedroom

11' 11" x 11' 8" (3.63m x 3.55m)

## Bedroom

9' 4" x 10' 11" (2.85m x 3.33m)

## Bathroom









THE FLOORPLAN IS FOR ILLUSTRATIVE PURPOSES ONLY AND IS NOT TO SCALE.  
Measurements and features are approximate and may differ from the actual property. Verify all details independently; no liability is accepted for errors or omissions.

Property marketing provided by [www.fotomarketing.co.uk](http://www.fotomarketing.co.uk)