

3 Lancaster Road

North Weald, Essex

Guide Price £425,000

Council Tax band: D

Tenure: Freehold

- Driveway
- Garage on block
- Garden with rear gate access
- Short drive to Epping station or the M11
- Short walk to local primary school
- Much-loved village location



Kitchen

12' 4" x 10' 0" (3.76m x 3.05m)

Living Room

9' 5" x 17' 2" (2.88m x 5.23m)

WC**Bedroom**

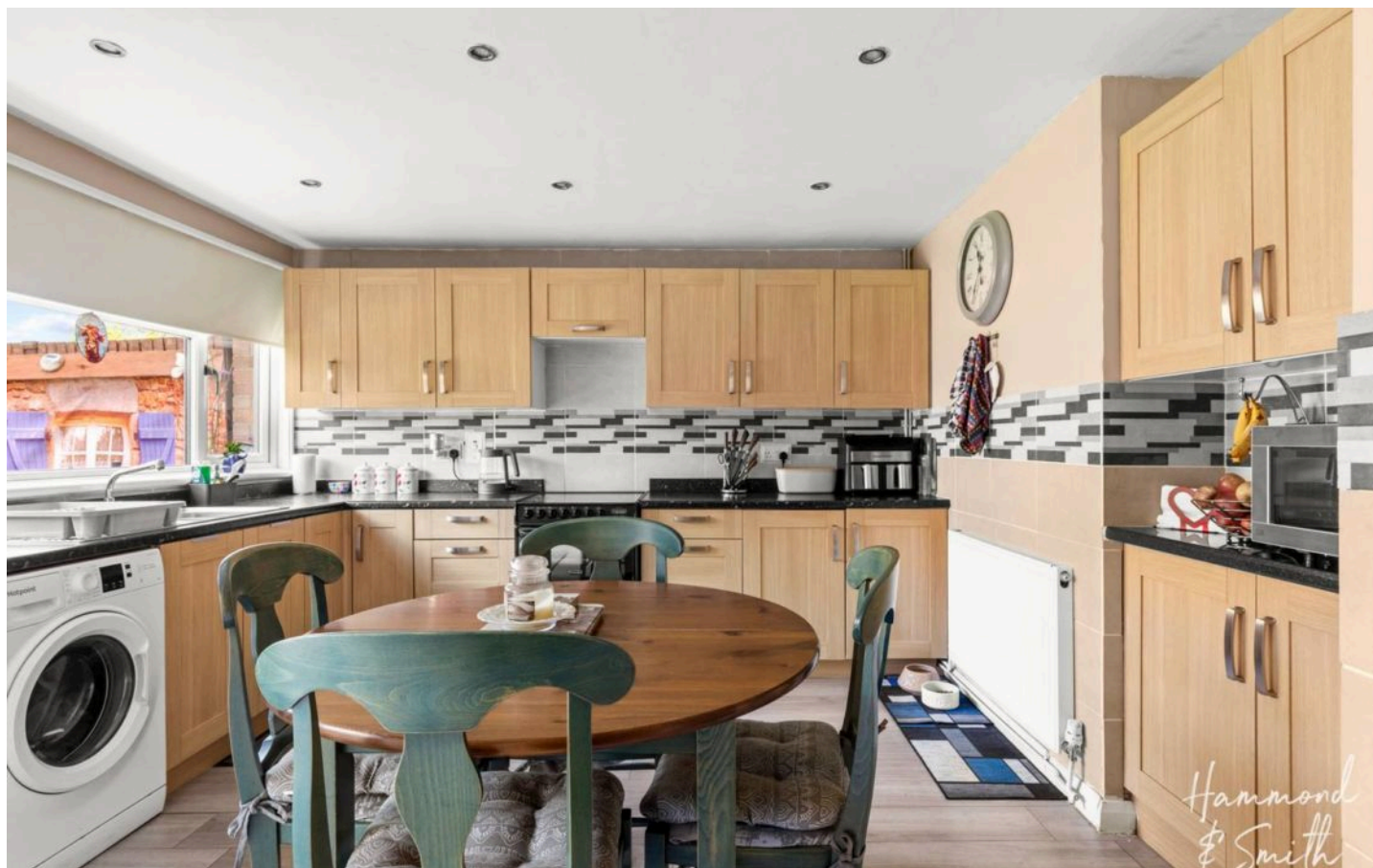
9' 6" x 13' 4" (2.90m x 4.07m)

Bedroom

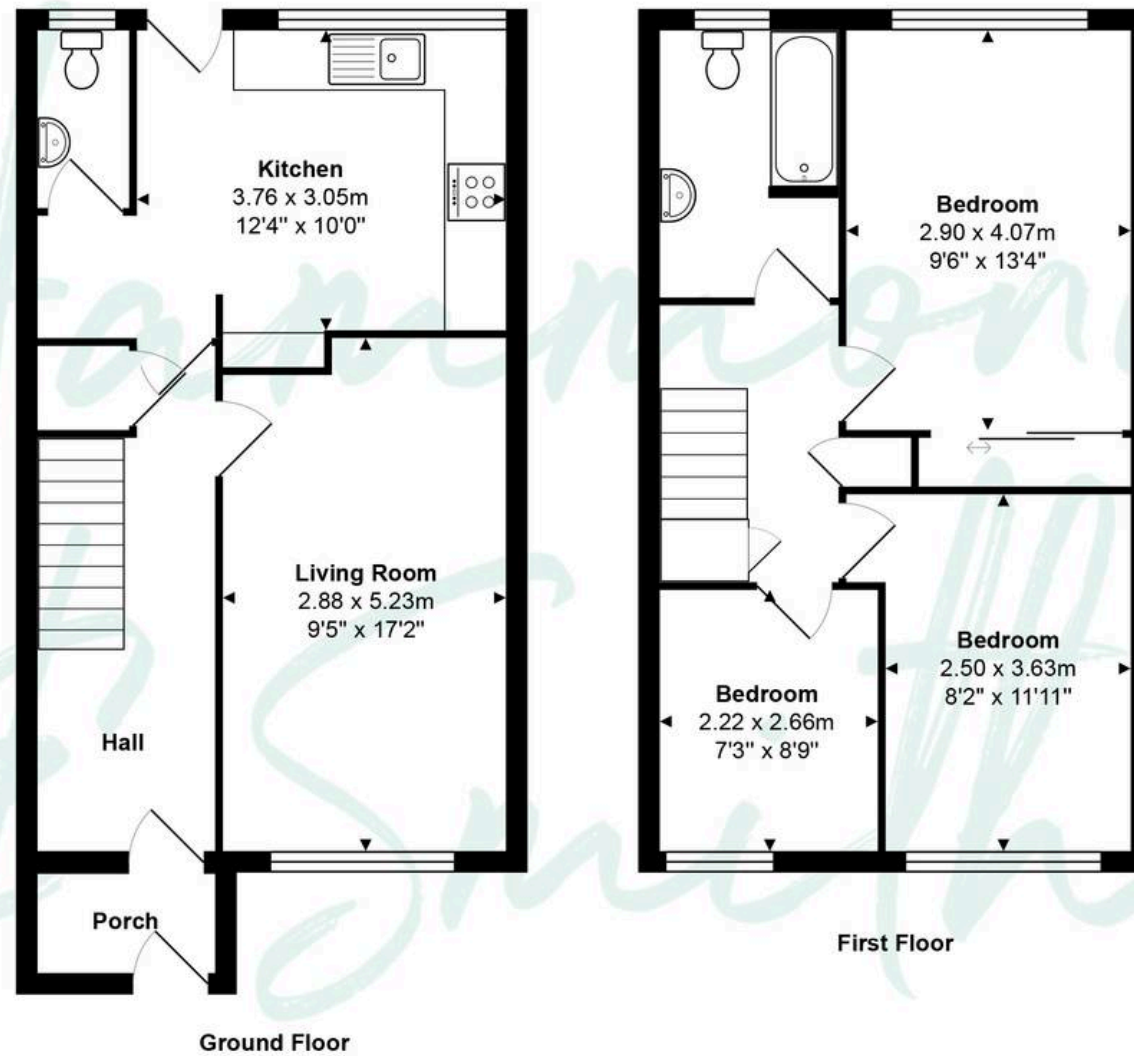
8' 2" x 11' 11" (2.50m x 3.63m)

Bedroom

7' 3" x 8' 9" (2.22m x 2.66m)

Bathroom





Total Area: approx. 82.2 m² ... 885 ft²

THE FLOORPLAN IS FOR ILLUSTRATIVE PURPOSES ONLY AND IS NOT TO SCALE.
Measurements and features are approximate and may differ from the actual property. Verify all details independently; no liability is accepted for errors or omissions.

Property marketing provided by www.fotomarketing.co.uk