

14 Ivy Chimneys

Epping, Essex

Council Tax band: D

Tenure: Freehold

- Chain free
- Two bedroom period cottage
- South facing garden
- Ivy Chimneys school catchment
- Walking distance to Epping station
- Driveway for two cars
- Fully Refurbished in 2023



Living Room

11' 2" x 10' 11" (3.40m x 3.32m)

Kitchen / Diner

14' 7" x 11' 2" (4.44m x 3.40m)

Bathroom

8' 2" x 4' 11" (2.50m x 1.50m)

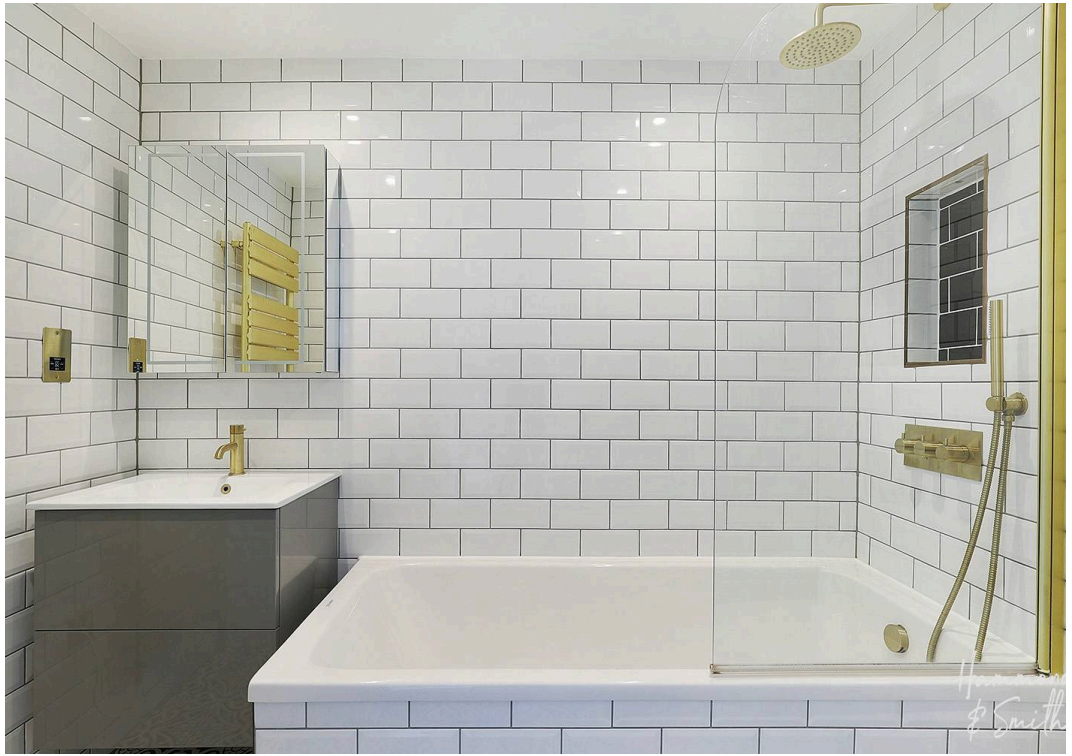
Bedroom

11' 6" x 10' 11" (3.51m x 3.33m)

Bedroom

8' 10" x 8' 7" (2.70m x 2.61m)

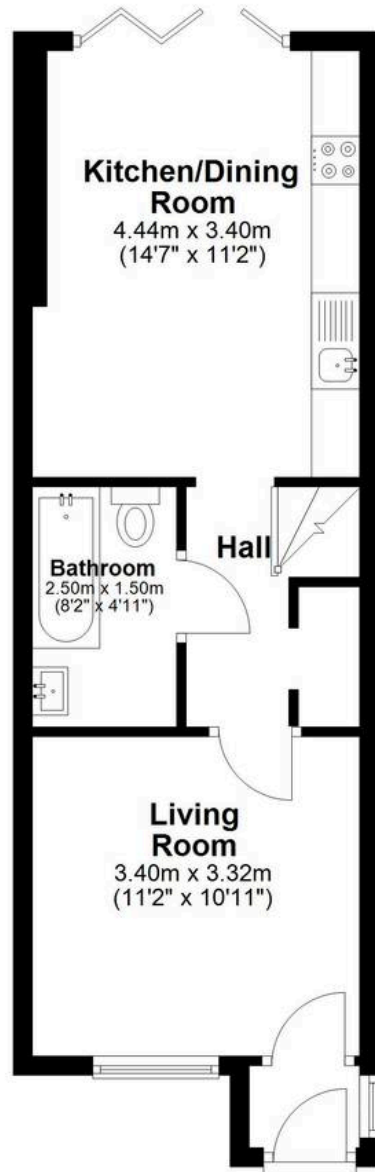






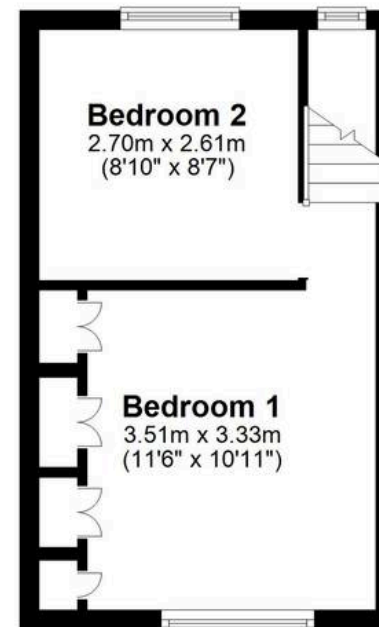
Ground Floor

Approx. 36.7 sq. metres (394.9 sq. feet)



First Floor

Approx. 21.2 sq. metres (227.8 sq. feet)



Total area: approx. 57.9 sq. metres (622.7 sq. feet)