

11 Beulah Road

Epping, Essex

Offers Over £1,400,000

Council Tax band: G

Tenure: Freehold

- Beautiful four bedroom family home
- Two ensuite shower rooms
- Walk-in dressing rooms
- Prestigious Epping road
- Short walk to Epping high street and station
- Stunning landscaped garden
- Driveway and garage



Kitchen / Dining Room

21' 4" x 20' 0" (6.50m x 6.09m)

Living Room

23' 6" x 12' 4" (7.17m x 3.75m)

Garden Room

16' 0" x 11' 9" (4.89m x 3.58m)

WC

Bedroom

9' 7" x 13' 10" (2.92m x 4.21m)

Dressing Room

Ensuite Shower Room

Bedroom (Walk-in wardrobe)

12' 11" x 8' 2" (3.94m x 2.48m)

Ensuite

Bedroom

11' 9" x 12' 3" (3.57m x 3.74m)

Bedroom

11' 6" x 10' 7" (3.50m x 3.22m)

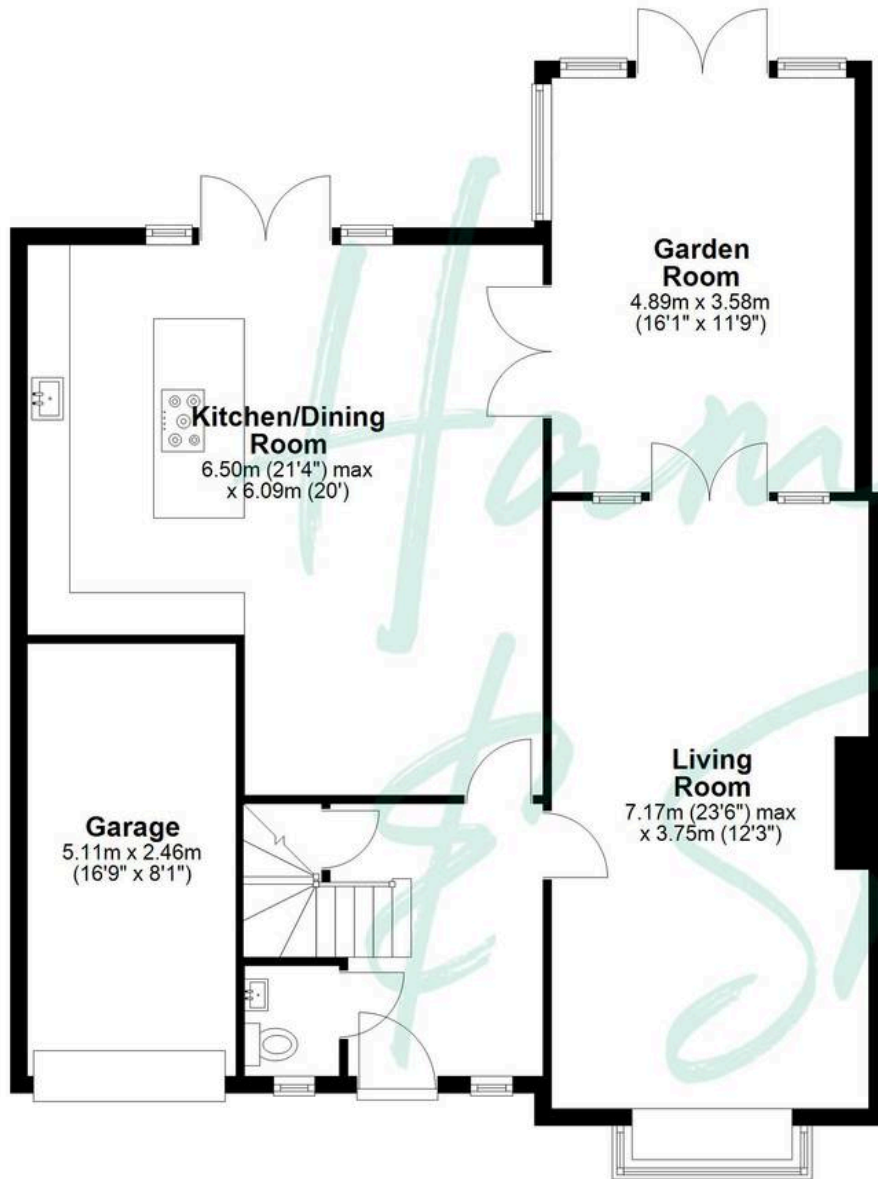
Bathroom





Ground Floor

Approx. 106.0 sq. metres (1140.9 sq. feet)



First Floor

Approx. 79.8 sq. metres (858.5 sq. feet)



Total area: approx. 185.7 sq. metres (1999.3 sq. feet)

THE FLOORPLAN IS FOR ILLUSTRATIVE PURPOSES ONLY AND IS NOT TO SCALE. Measurements and features are approximate and may differ from the actual property. Verify all details independently; no liability is accepted for errors or omissions.