

17 Green Close

Epping Green, Epping

Council Tax band: D

Tenure: Freehold

- Picturesque countryside views
- Beautifully presented
- Two double bedrooms
- Driveway
- Short drive to Epping high street and station
- Low maintenance rear garden



Kitchen

8' 9" x 7' 2" (2.67m x 2.19m)

Living Room

14' 6" x 13' 9" (4.43m x 4.18m)

Conservatory

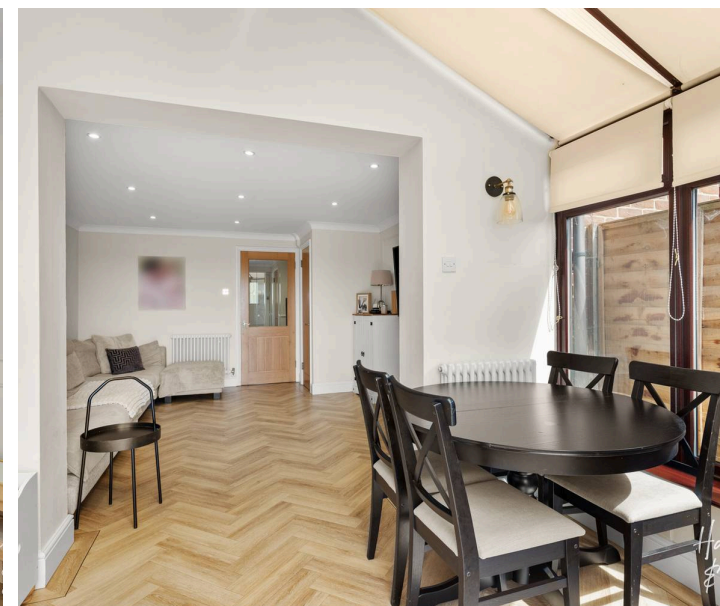
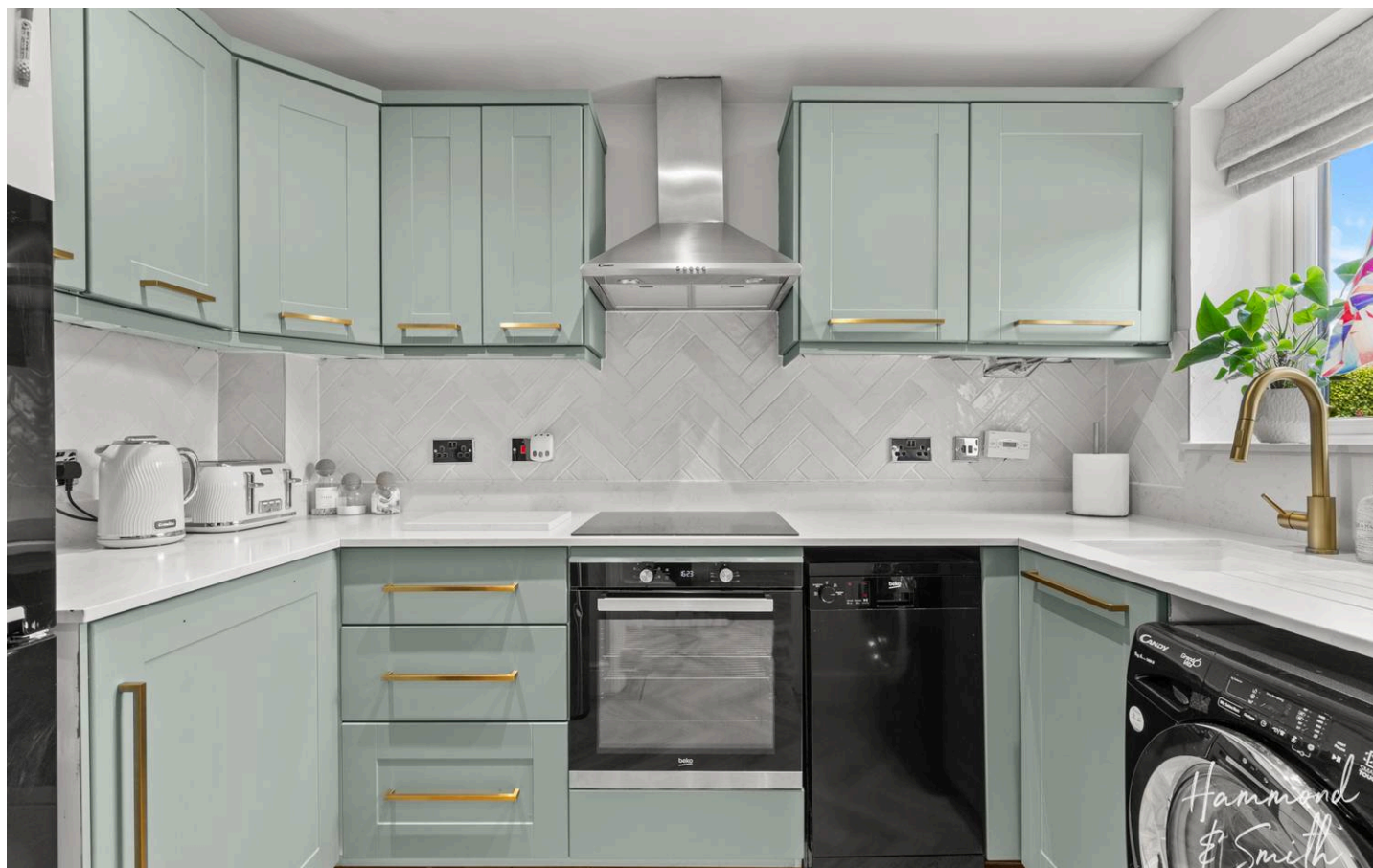
8' 4" x 11' 8" (2.54m x 3.55m)

WC**Bedroom**

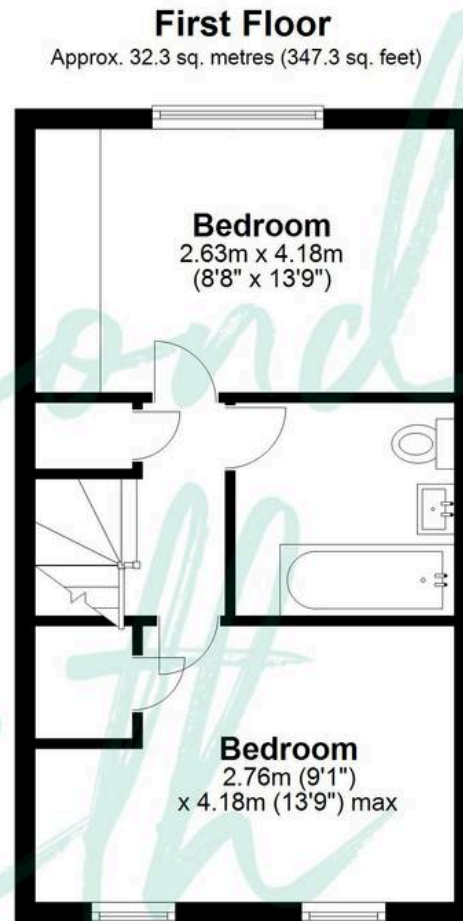
8' 8" x 13' 9" (2.63m x 4.18m)

Bedroom

9' 1" x 13' 9" (2.76m x 4.18m)

Bathroom





Total area: approx. 74.1 sq. metres (797.5 sq. feet)

THE FLOORPLAN IS FOR ILLUSTRATIVE PURPOSES ONLY AND IS NOT TO SCALE. Measurements and features are approximate and may differ from the actual property. Verify all details independently; no liability is accepted for errors or omissions.