

58 Higham View

North Weald, Epping

Council Tax band: D

Tenure: Freehold

- Two double bedroom bungalow
- Driveway
- Ideal home for downsizing
- Shower room
- In a much-loved village location
- Short drive to Epping and the M11



Living Room

17' 1" x 11' 10" (5.20m x 3.60m)

Kitchen

14' 0" x 8' 5" (4.26m x 2.57m)

Dining Room

15' 6" x 11' 9" (4.73m x 3.59m)

Bedroom

16' 2" x 7' 9" (4.92m x 2.35m)

Bedroom

12' 0" x 9' 11" (3.65m x 3.02m)

Shower Room

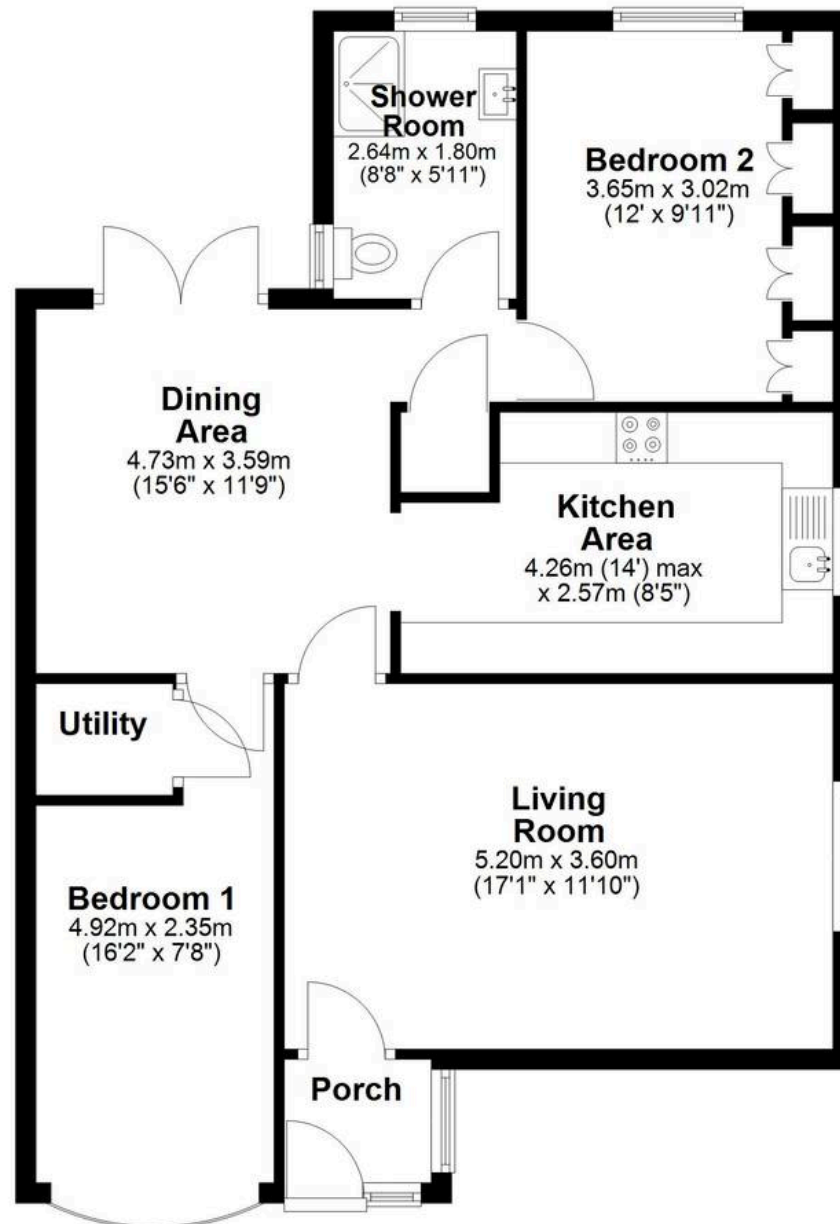
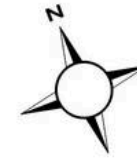
8' 8" x 5' 11" (2.64m x 1.80m)





Ground Floor

Approx. 75.3 sq. metres (810.6 sq. feet)



Total area: approx. 75.3 sq. metres (810.6 sq. feet)