

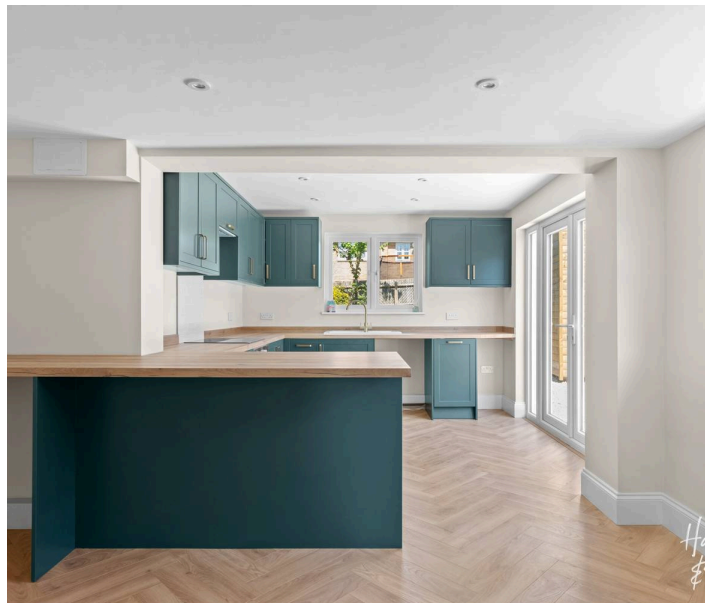
Mandalay Epping Road

Ongar

Council Tax band: C

Tenure: Freehold

- Beautifully renovated cottage style home
- End of terrace with driveway
- Brand new shaker kitchen and bathroom suite
- Outdoor garden room with separate storage - ideal home office or gym
- Landscaped garden
- Short drive to the M11 and Epping station
- Chain Free
- Side Access



Living Room

16' 8" x 12' 4" (5.08m x 3.76m)

Kitchen

18' 2" x 12' 4" (5.54m x 3.76m)

Bedroom

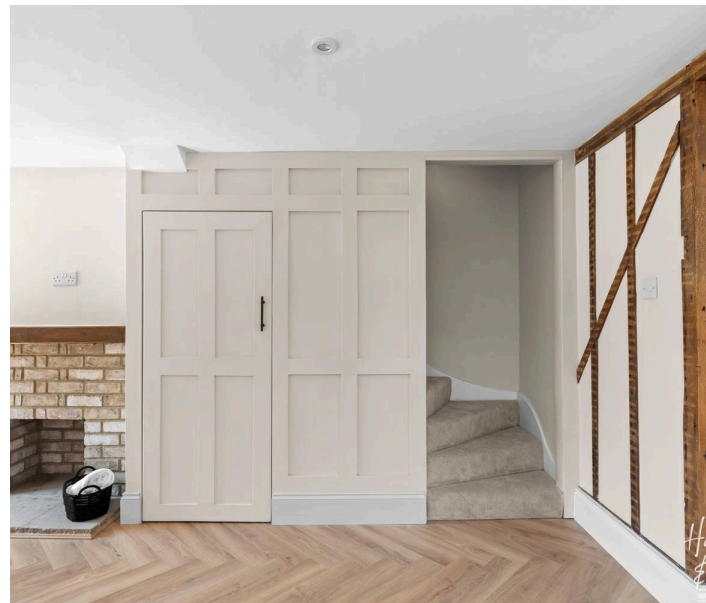
8' 5" x 12' 4" (2.56m x 3.76m)

Bedroom

7' 9" x 10' 6" (2.36m x 3.19m)

Bathroom**Garden Room / Office**

11' 2" x 8' 0" (3.40m x 2.44m)





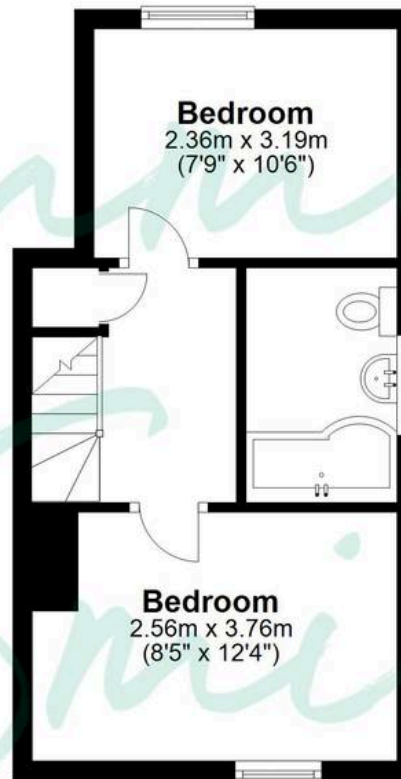
Ground Floor

Approx. 39.8 sq. metres (427.9 sq. feet)



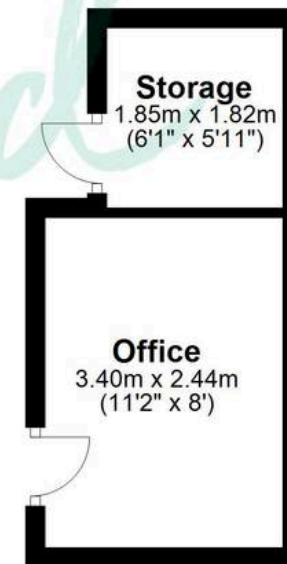
First Floor

Approx. 26.8 sq. metres (288.3 sq. feet)



Outbuilding

Approx. 11.8 sq. metres (127.4 sq. feet)



Total area: approx. 78.4 sq. metres (843.5 sq. feet)

THE FLOORPLAN IS FOR ILLUSTRATIVE PURPOSES ONLY AND IS NOT TO SCALE. Measurements and features are approximate and may differ from the actual property. Verify all details independently; no liability is accepted for errors or omissions.