

3 Harrowbond Road

Newhall, Harlow

Offers Over £600,000

Council Tax band: G

Tenure: Freehold

- Architecturally unique family home
- Nestled in a much-loved community location
- Primary suite with ensuite shower room, dressing room and roof terrace
- South facing private landscaped garden
- Flexible open-plan living
- Double garage
- Fantastic walks near by



Family space

Kitchen

19' 8" x 12' 6" (6.00m x 3.80m)

Living Room

19' 8" x 12' 6" (6.00m x 3.80m)

Downstairs WC

Primary bedroom

20' 8" x 13' 1" (6.30m x 4.00m)

Ensuite shower room

Bedroom

18' 4" x 10' 2" (5.60m x 3.10m)

Bedroom

12' 10" x 10' 10" (3.90m x 3.30m)

Bedroom

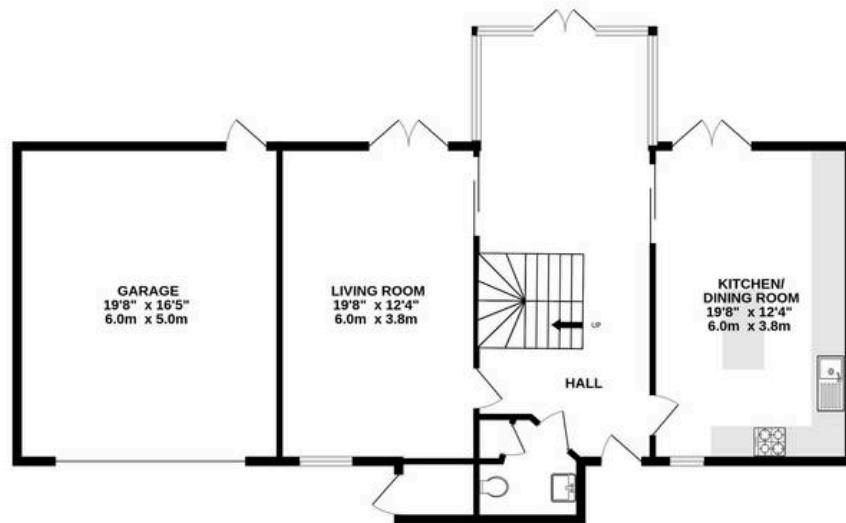
12' 10" x 8' 6" (3.90m x 2.60m)

Bathroom

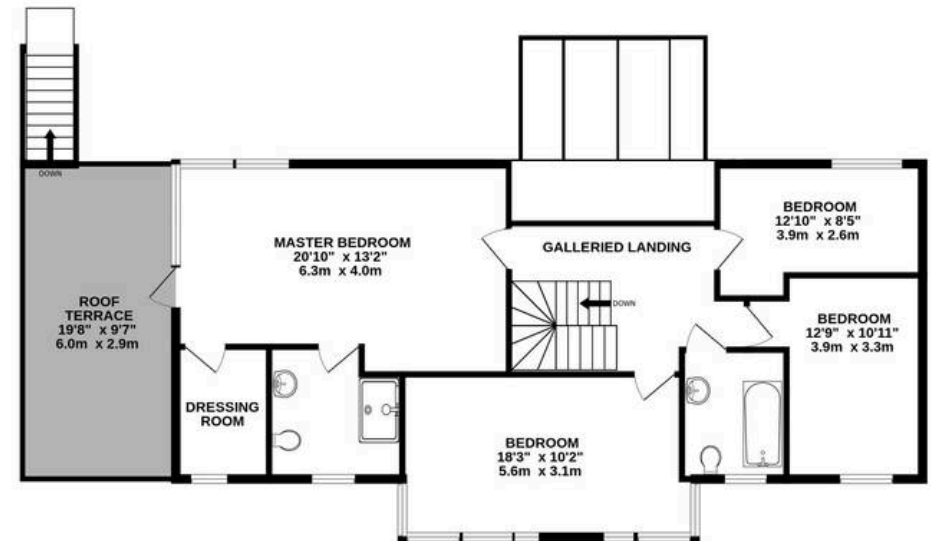




GROUND FLOOR
1145 sq.ft. (106.3 sq.m.) approx.



1ST FLOOR
1008 sq.ft. (93.7 sq.m.) approx.



TOTAL FLOOR AREA : 2153 sq.ft. (200.0 sq.m.) approx.

Whilst every attempt has been made to ensure the accuracy of the floorplan contained here, measurements of doors, windows, rooms and any other items are approximate and no responsibility is taken for any error, omission or mis-statement. This plan is for illustrative purposes only and should be used as such by any prospective purchaser.