

15 Cedar Court

Epping, Epping

Council Tax band: C

Tenure: Share of Freehold

- Ground floor apartment with private balcony
- Moments from Epping Underground Station
- Private parking
- Short walk to Epping high street
- En-suite bathroom and separate WC
- Neutral interiors throughout



Kitchen

10' 2" x 7' 3" (3.10m x 2.20m)

Lounge / Diner

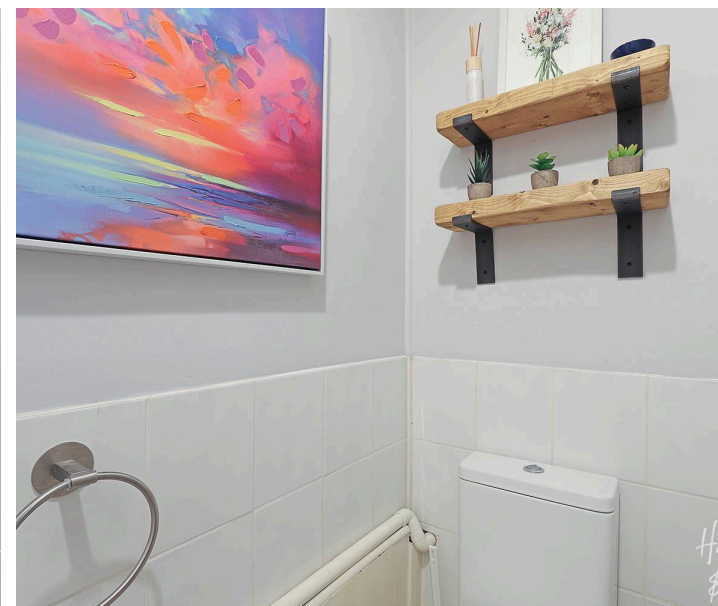
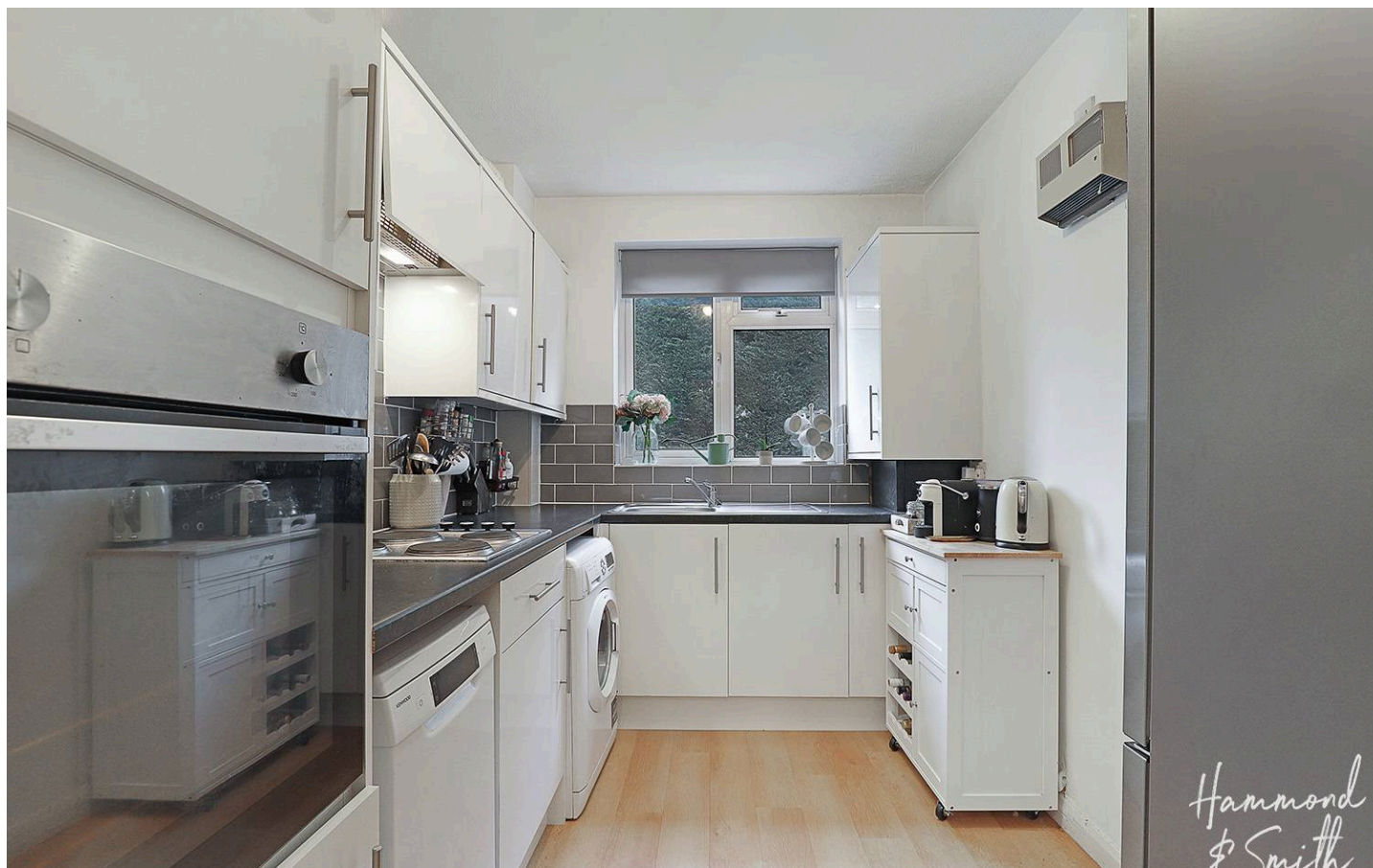
17' 1" x 13' 1" (5.21m x 4.00m)

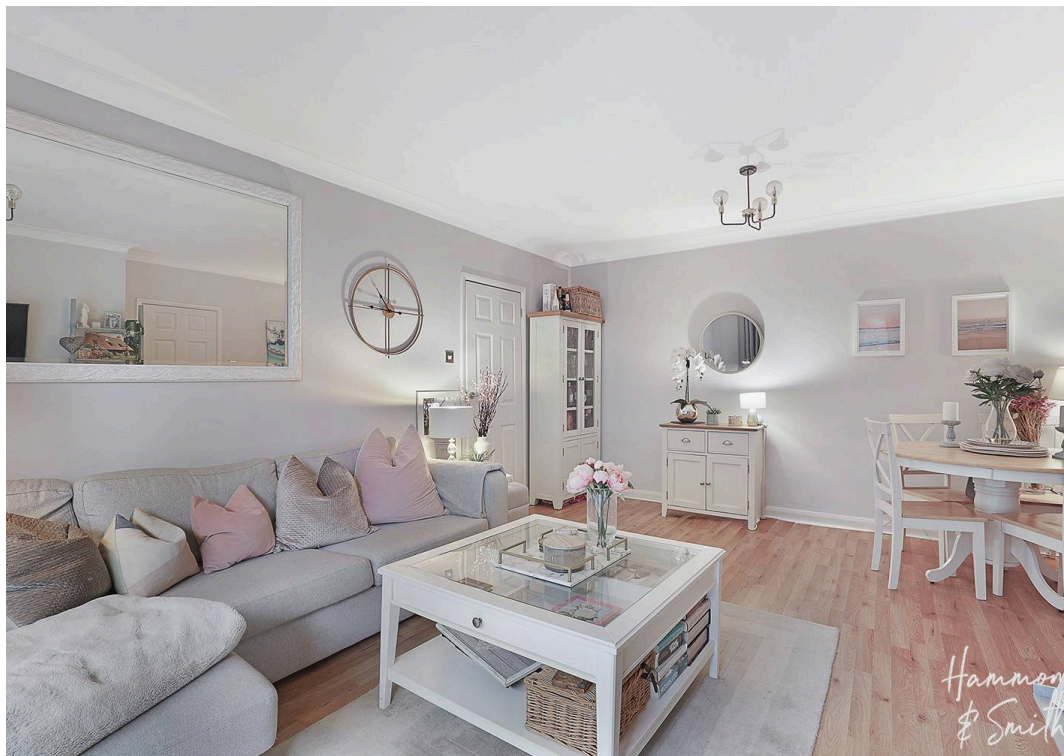
WC**Bedroom**

13' 0" x 10' 0" (3.96m x 3.05m)

Bathroom

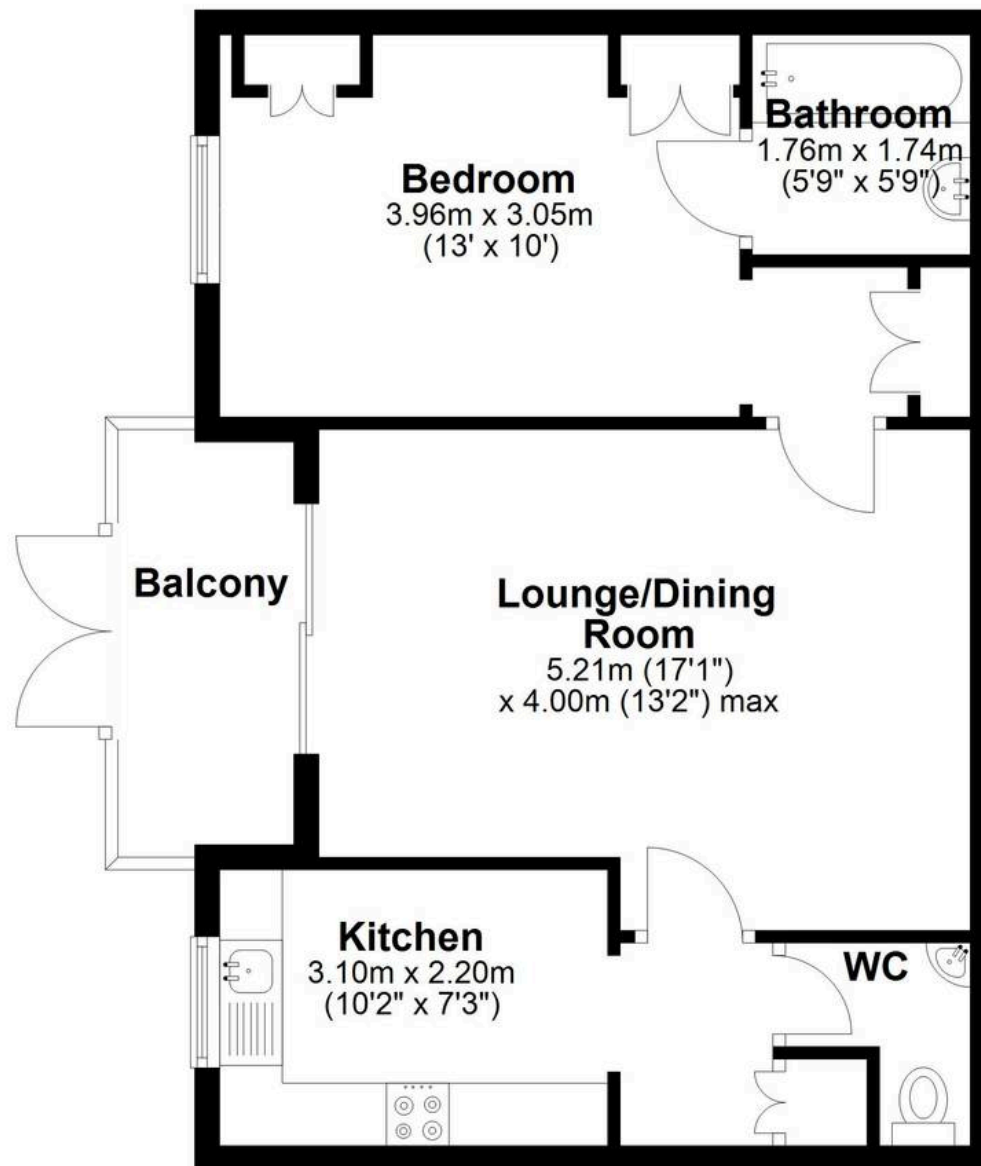
5' 9" x 5' 9" (1.76m x 1.74m)





Ground Floor

Approx. 49.8 sq. metres (535.5 sq. feet)



Total area: approx. 49.8 sq. metres (535.5 sq. feet)