

# 12 Vicarage Lane

North Weald, Epping

Council Tax band: E

Tenure: Freehold

- Spacious four bedroom chalet bungalow
- Sizeable gated front driveway
- Garden outbuilding
- Primary bedroom with ensuite shower room
- Utility room
- Short drive to the M11
- In need of modernisation





**Entrance hallway**

**Kitchen / Diner**

27' 5" x 16' 2" (8.37m x 4.92m)

**Living Room**

15' 9" x 15' 1" (4.81m x 4.59m)

**Bedroom**

11' 4" x 9' 10" (3.46m x 2.99m)

**Bedroom**

13' 1" x 9' 10" (4.00m x 2.99m)

**Bathroom**

7' 7" x 7' 5" (2.31m x 2.26m)

**Bedroom**

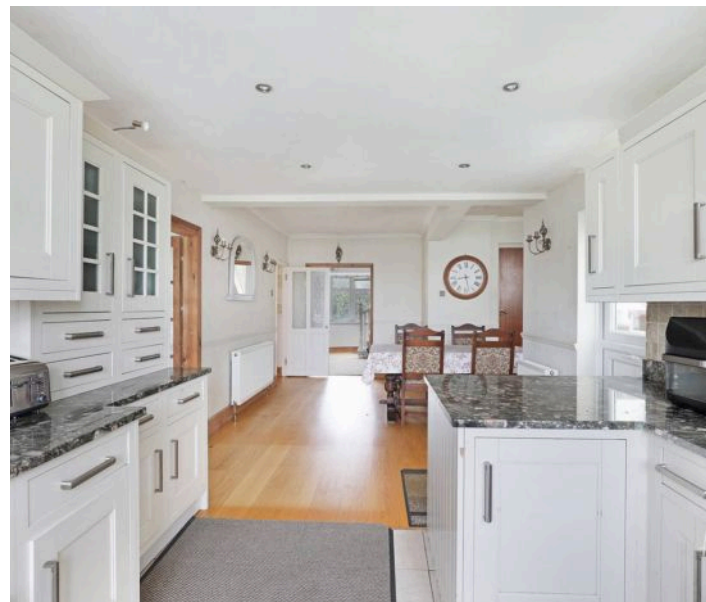
14' 1" x 11' 11" (4.28m x 3.64m)

**Bedroom**

17' 7" x 13' 7" (5.37m x 4.14m)

**Ensuite shower room**

12' 0" x 5' 9" (3.65m x 1.75m)





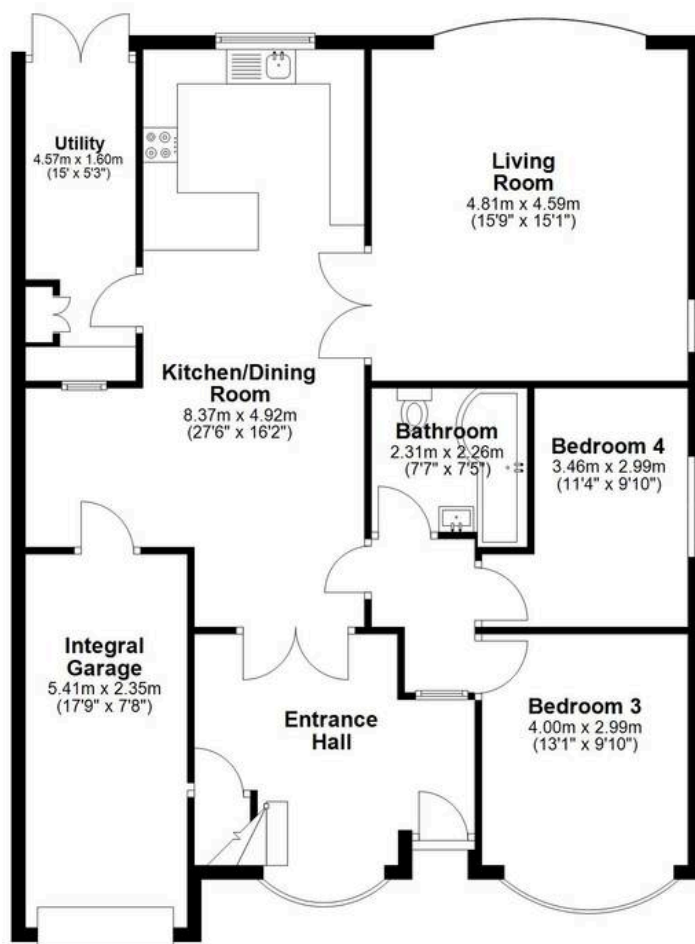
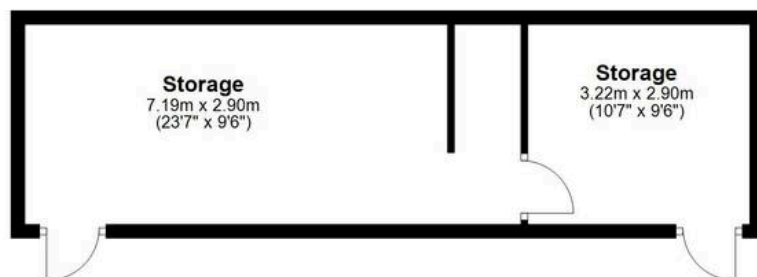






### Ground Floor

Main area: approx. 115.6 sq. metres (1244.7 sq. feet)  
Plus outbuildings, approx. 30.4 sq. metres (327.5 sq. feet)



Main area: Approx. 159.1 sq. metres (1712.4 sq. feet)  
Plus outbuildings, approx. 30.4 sq. metres (327.5 sq. feet)

### First Floor

Approx. 43.5 sq. metres (467.7 sq. feet)

