

# 93 High Road

North Weald, Epping

Council Tax band: E

Tenure: Freehold

- Detached
- Opportunity to add your own stamp
- Driveway and integral garage
- Kitchen/diner
- Short drive to Epping with good transport link
- In a much-loved village





**Porch**

**Hall**

**Kitchen/Dining Room**

15' 5" x 10' 4" (4.70m x 3.15m)

**Living Room**

15' 11" x 13' 0" (4.84m x 3.96m)

**Bedroom 1**

13' 1" x 11' 8" (3.98m x 3.55m)

**Bedroom 2**

12' 0" x 8' 5" (3.67m x 2.56m)

**Bedroom 3**

10' 1" x 5' 11" (3.08m x 1.80m)

**Shower Room**

8' 10" x 6' 9" (2.70m x 2.05m)





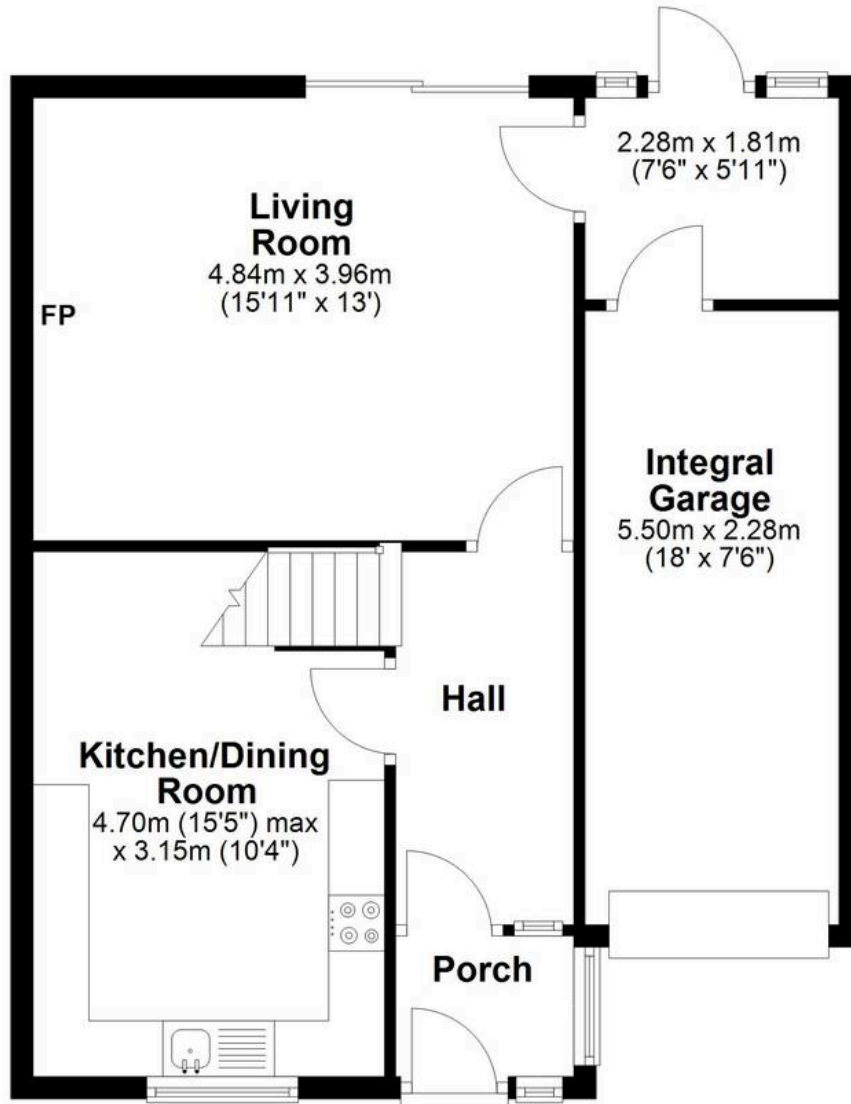






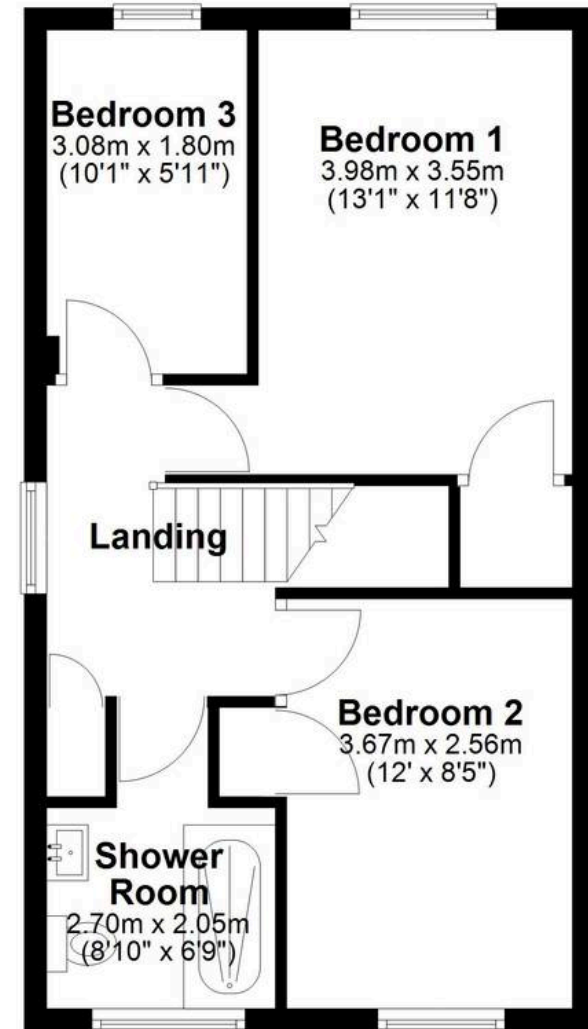
## Ground Floor

Approx. 60.0 sq. metres (646.2 sq. feet)



## First Floor

Approx. 41.3 sq. metres (444.3 sq. feet)



Total area: approx. 101.3 sq. metres (1090.5 sq. feet)