

# Willow End

Epping Upland, Essex

Guide Price £475,000

Council Tax band: B

Tenure: Freehold

- Chain Free
- Detached rural property
- 2 Parking spaces
- Turn key condition
- Large living/dining room
- Modern kitchen
- Grade II listed converted in 2000's





**Lounge/Dining Room**

30' 0" x 17' 9" (9.15m x 5.40m)

**Kitchen**

10' 11" x 8' 2" (3.34m x 2.49m)

**Shower Room**

8' 2" x 6' 5" (2.49m x 1.96m)

**Bedroom**

17' 9" x 9' 2" (5.40m x 2.80m)

**Bedroom 2/ Study**

17' 9" x 9' 3" (5.40m x 2.83m)



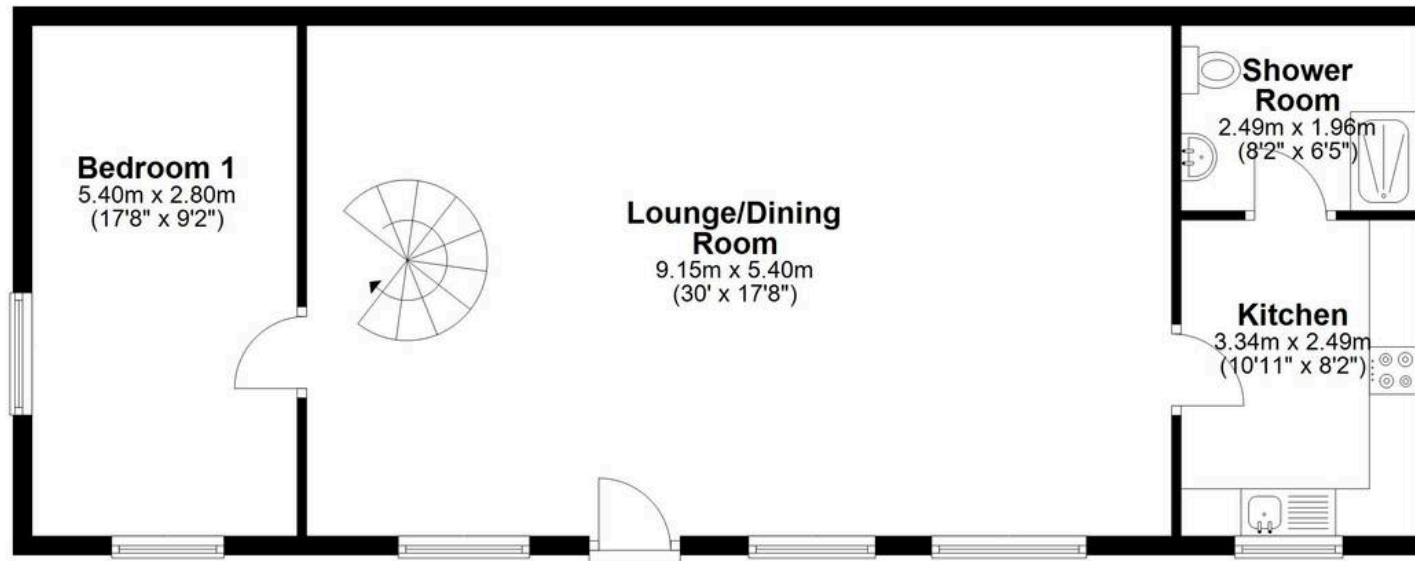






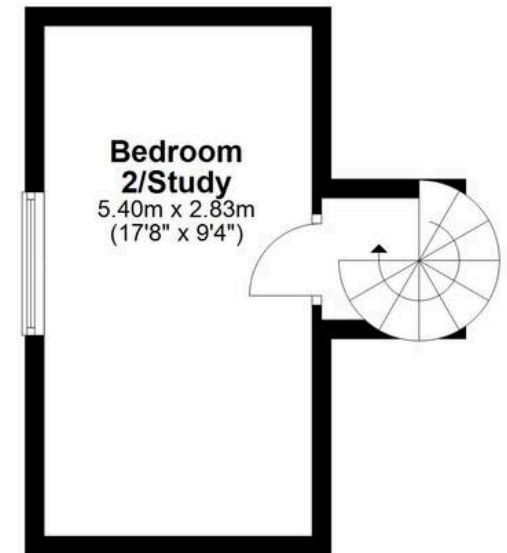
### Ground Floor

Approx. 79.0 sq. metres (850.6 sq. feet)



### First Floor

Approx. 17.1 sq. metres (184.3 sq. feet)



Total area: approx. 96.1 sq. metres (1034.9 sq. feet)