

2 Park Close

North Weald, Essex

Guide Price £700,000

Council Tax band: E

Tenure: Freehold

- Four bedroom family home
- Private spacious rear garden
- Ensuite shower room to primary bedroom
- Utility room
- In a much-loved village location
- Short drive to Epping station and the M11
- Potential to extend



Hallway

Kitchen

12' 11" x 10' 2" (3.93m x 3.10m)

Living Room

17' 5" x 12' 0" (5.30m x 3.65m)

WC

4' 10" x 6' 3" (1.47m x 1.90m)

Dining Room

12' 11" x 11' 6" (3.93m x 3.50m)

Bedroom 1

17' 5" x 16' 8" (5.30m x 5.08m)

Ensuite shower room

7' 10" x 5' 7" (2.40m x 1.70m)

Bedroom 2

13' 0" x 11' 1" (3.95m x 3.38m)

Bedroom 3

8' 11" x 10' 4" (2.72m x 3.14m)

Bedroom 4

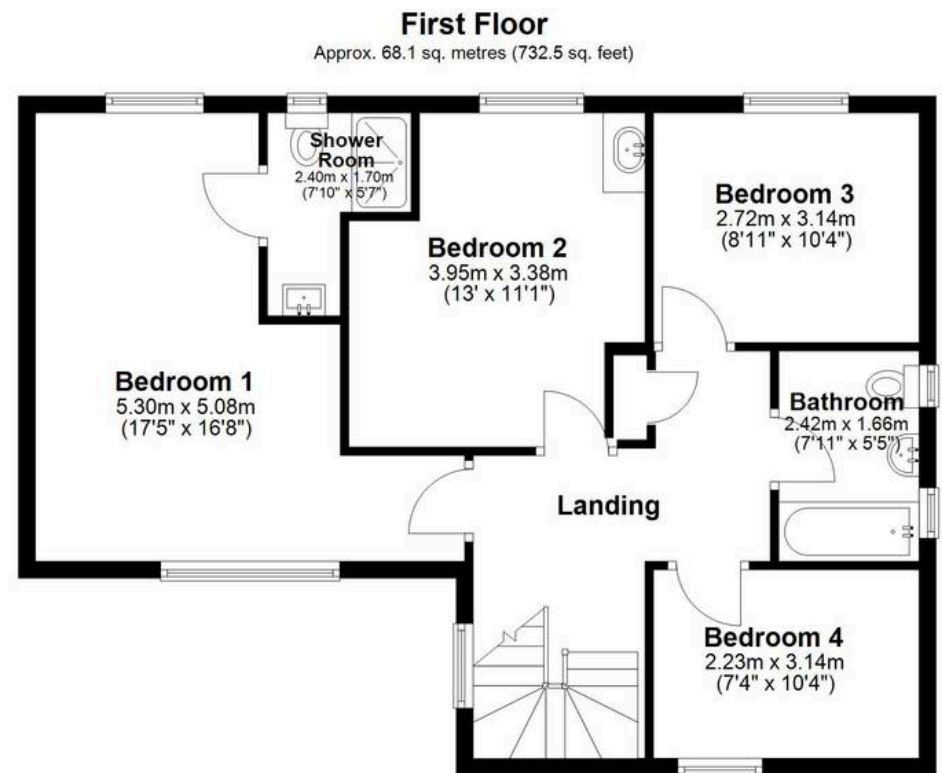
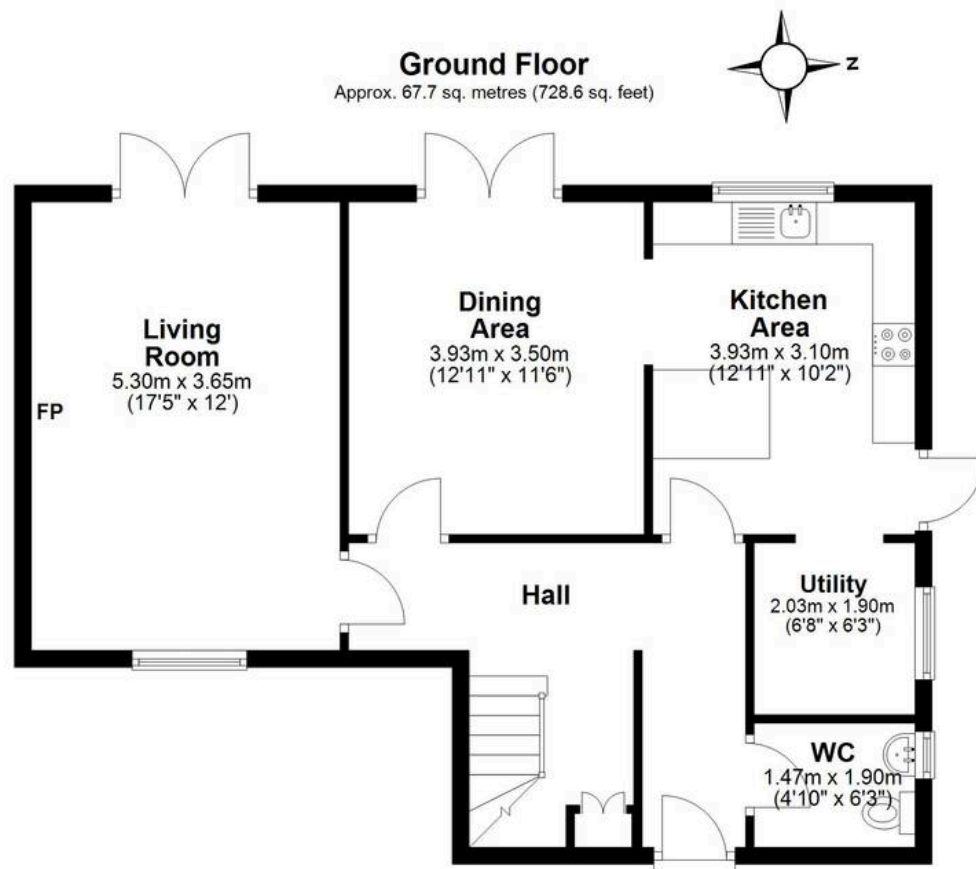
7' 4" x 10' 4" (2.23m x 3.14m)

Bathroom

7' 11" x 5' 5" (2.42m x 1.66m)







Total area: approx. 135.7 sq. metres (1461.1 sq. feet)