

# 80 Thornhill

North Weald, Essex

Guide Price £475,000

Council Tax band: E

Tenure: Freehold

- Three double bedrooms
- Opportunity to add own stamp
- Driveway and integral garage
- Downstairs WC
- Short drive to Epping station and M11
- In a much-loved village location





**Kitchen**

8' 1" x 9' 2" (2.46m x 2.79m)

**Living Room**

15' 4" x 19' 2" (4.67m x 5.85m)

**Reception / Dining Room**

10' 7" x 9' 9" (3.23m x 2.96m)

**Conservatory**

8' 8" x 10' 0" (2.64m x 3.05m)

**WC****Bedroom 1**

10' 8" x 19' 2" (3.25m x 5.85m)

**Bedroom 2**

12' 2" x 9' 4" (3.70m x 2.85m)

**Bedroom 3**

10' 0" x 9' 6" (3.04m x 2.90m)

**Bathroom**

8' 6" x 6' 3" (2.60m x 1.91m)



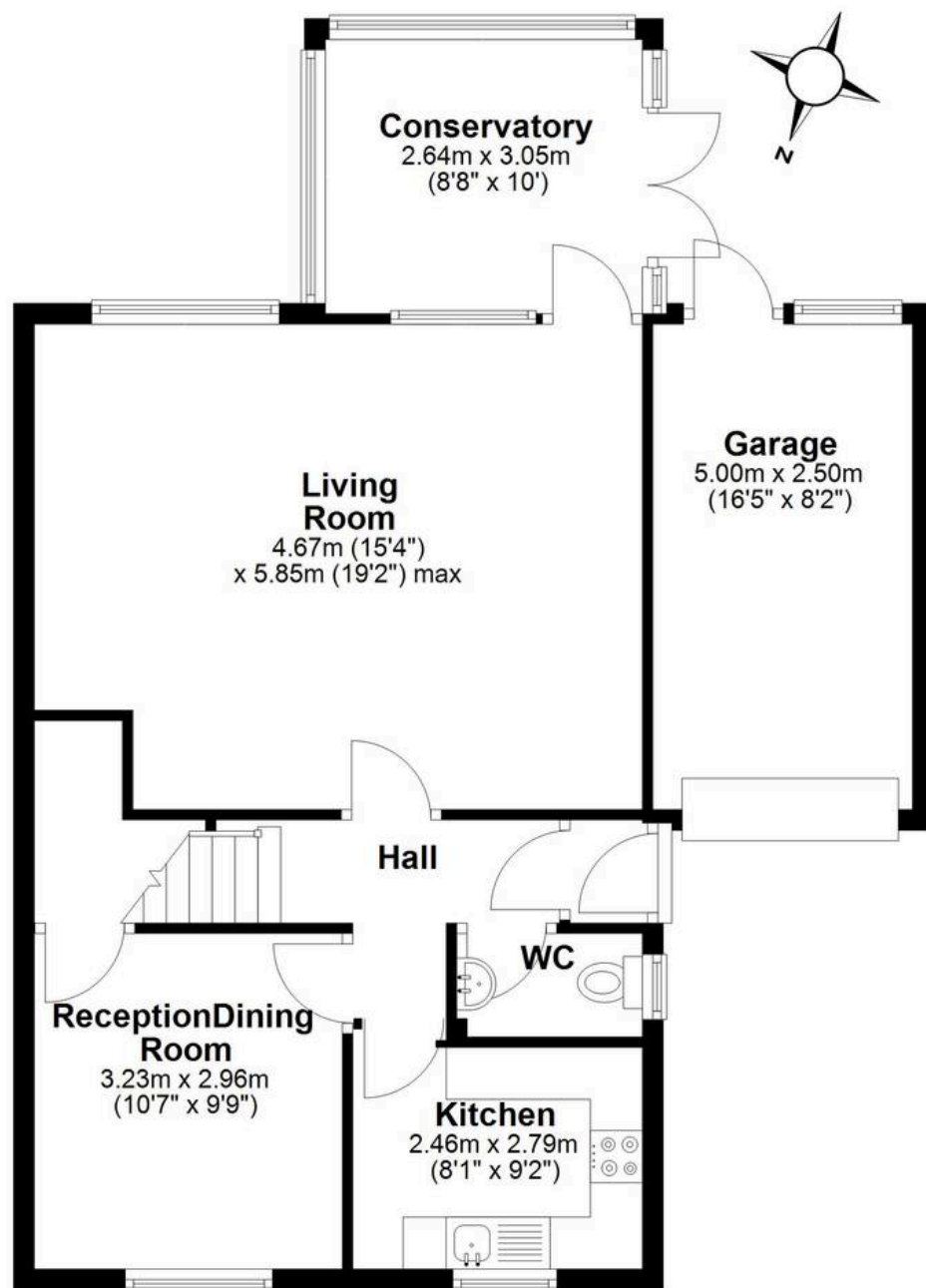






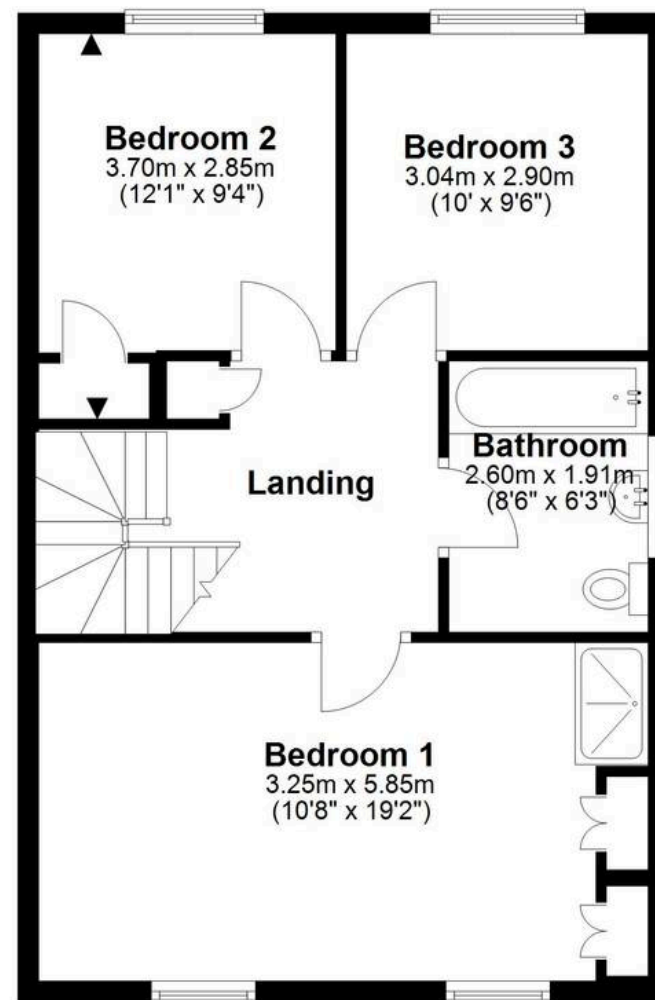
## Ground Floor

Approx. 74.5 sq. metres (801.5 sq. feet)



## First Floor

Approx. 53.2 sq. metres (572.2 sq. feet)



Total area: approx. 127.6 sq. metres (1373.7 sq. feet)