

9 Hazelwood Park Hastingwood Road

Hastingwood, Harlow

Guide Price £460,000

Council Tax band: E

Tenure: Freehold

- Ensuite shower room to primary bedroom
- Sleek integrated kitchen
- Arranged across three floors
- A lovely modern development built in 2017
- Short drive to the M11 and Epping Underground Station
- Allocated parking
- Field views



Lounge

13' 1" x 11' 6" (4.00m x 3.50m)

Kitchen / Dining Room

19' 8" x 11' 6" (6.00m x 3.50m)

WC

Primary Bedroom

11' 6" x 9' 6" (3.50m x 2.90m)

Ensuite shower room

Bedroom 2

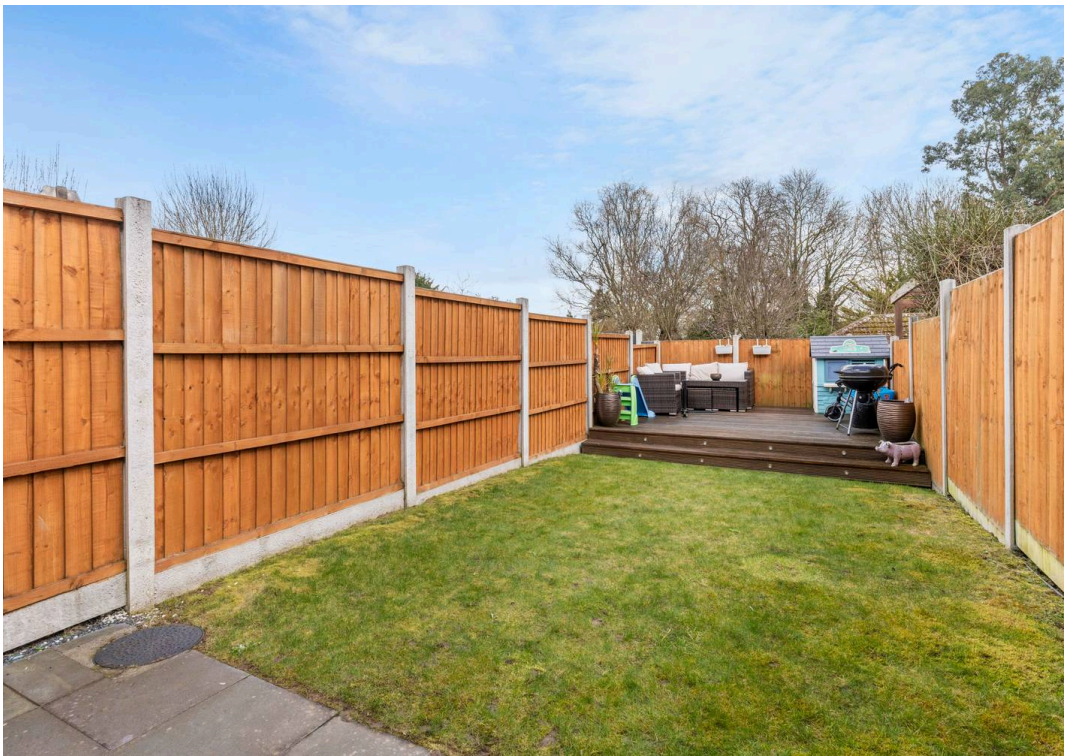
11' 6" x 9' 6" (3.50m x 2.90m)

Bathroom

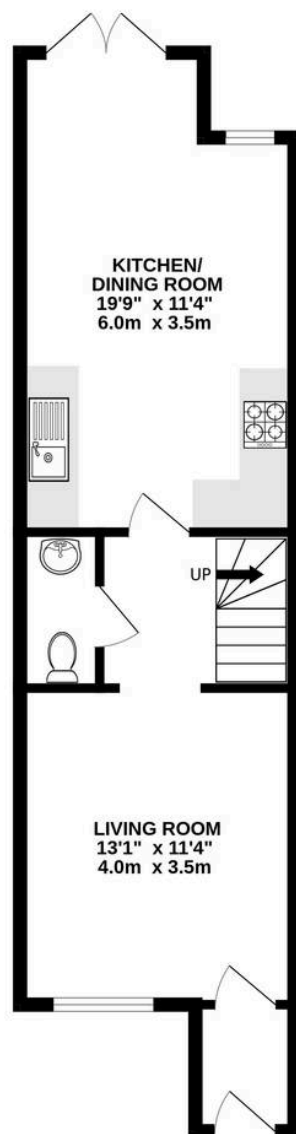
Bedroom 3

21' 8" x 11' 6" (6.60m x 3.50m)

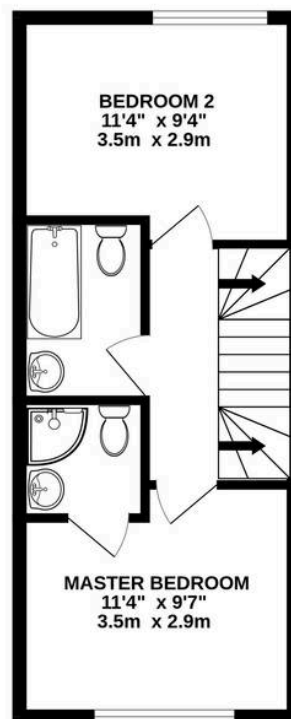




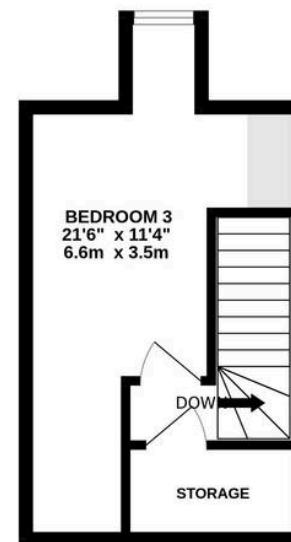
GROUND FLOOR
453 sq.ft. (42.1 sq.m.) approx.



1ST FLOOR
327 sq.ft. (30.4 sq.m.) approx.



2ND FLOOR
214 sq.ft. (19.8 sq.m.) approx.



TOTAL FLOOR AREA : 993 sq.ft. (92.3 sq.m.) approx.

Whilst every attempt has been made to ensure the accuracy of the floorplan contained here, measurements of doors, windows, rooms and any other items are approximate and no responsibility is taken for any error, omission or mis-statement. This plan is for illustrative purposes only and should be used as such by any prospective purchaser.