

22 Brook Road

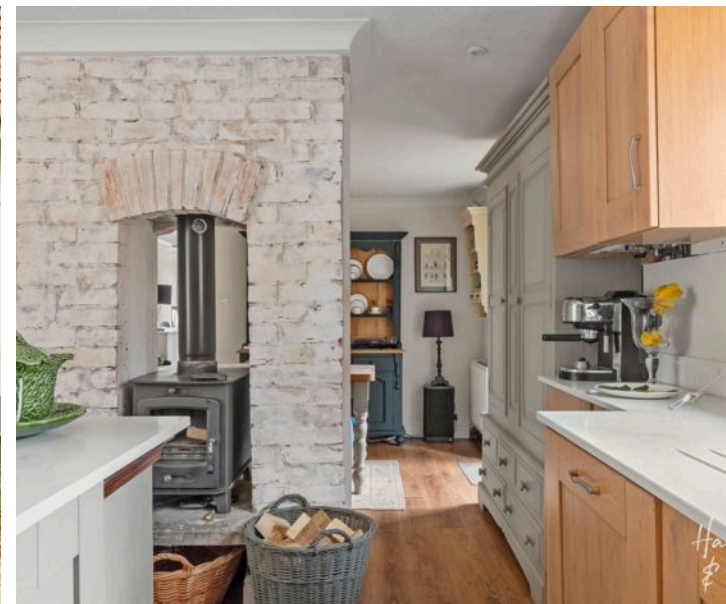
Epping, Essex

Offers Over £800,000

Council Tax band: E

Tenure: Freehold

- Walking distance to Epping Station and Epping High Street
- Partially built extensions offering scope to grow
- Full of character
- Spacious driveway with carport
- Three double bedrooms
- Multi-generational living opportunity



Entrance

Reception

11' 1" x 11' 8" (3.38m x 3.56m)

Bedroom

11' 1" x 9' 2" (3.38m x 2.79m)

Utility Room

Bedroom

10' 8" x 11' 1" (3.25m x 3.38m)

Shower Room

Lounge

14' 0" x 11' 8" (4.27m x 3.56m)

Bedroom

14' 0" x 11' 9" (4.27m x 3.59m)

Bathroom

Kitchen/ Diner

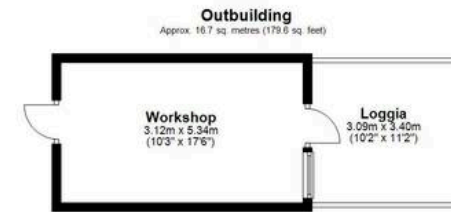
24' 11" x 14' 6" (7.60m x 4.42m)

Sitting Room

12' 7" x 10' 7" (3.84m x 3.23m)







Main area: Approx. 159.9 sq. metres (1721.0 sq. feet)
Plus car port: approx. 17.4 sq. metres (187.0 sq. feet)
Plus partially completed extensions: approx. 29.4 sq. metres (316.2 sq. feet)

THE FLOORPLAN IS FOR ILLUSTRATIVE PURPOSES ONLY AND IS NOT TO SCALE. Measurements and features are approximate and may differ from the actual property. Verify all details independently, no liability is accepted for errors or omissions.
Property marketing provided by www.fotomarketing.co.uk