

8 Wintry Mews

Epping

Council Tax band: E

Tenure: Leasehold

- Allocated parking
- First floor with lift access
- Ensuite shower room
- Gated development
- Walking distance to Epping station and high street



Hammond
& Smith

Hallway

Open Plan Kitchen / Living / Dining

21' 3" x 17' 10" (6.48m x 5.43m)

Bedroom 1

14' 1" x 12' 1" (4.30m x 3.68m)

En-suite shower room

7' 6" x 4' 11" (2.28m x 1.50m)

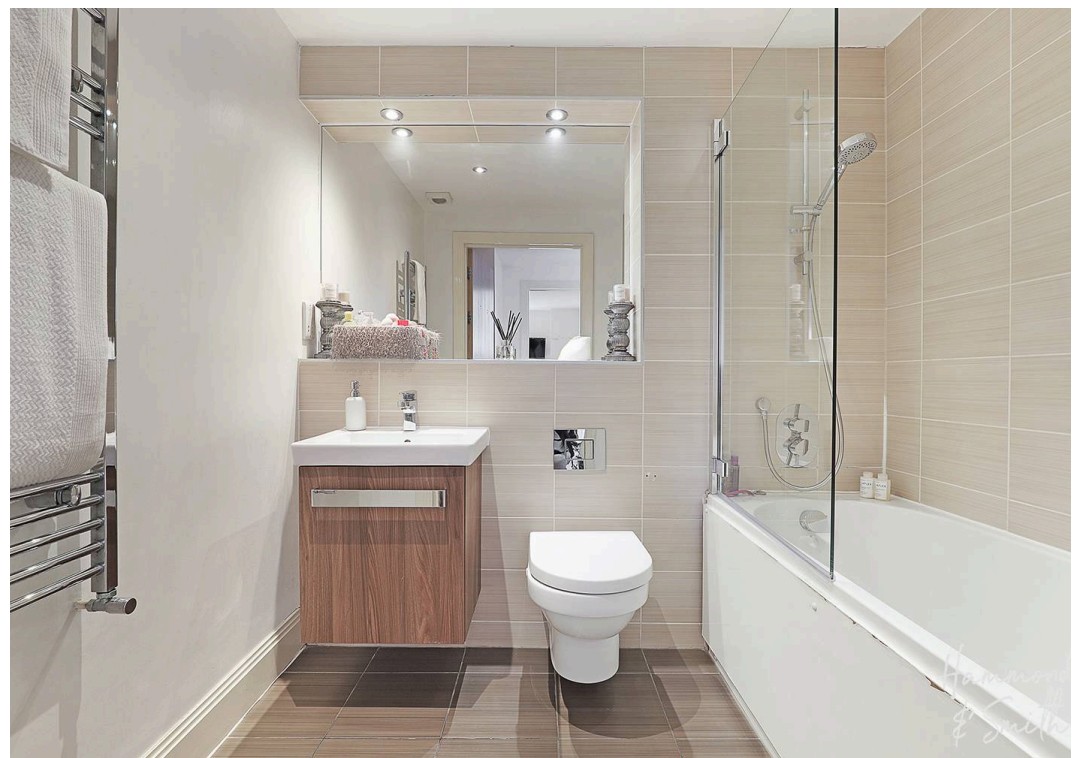
Bedroom 2

13' 1" x 9' 3" (3.98m x 2.83m)

Bathroom

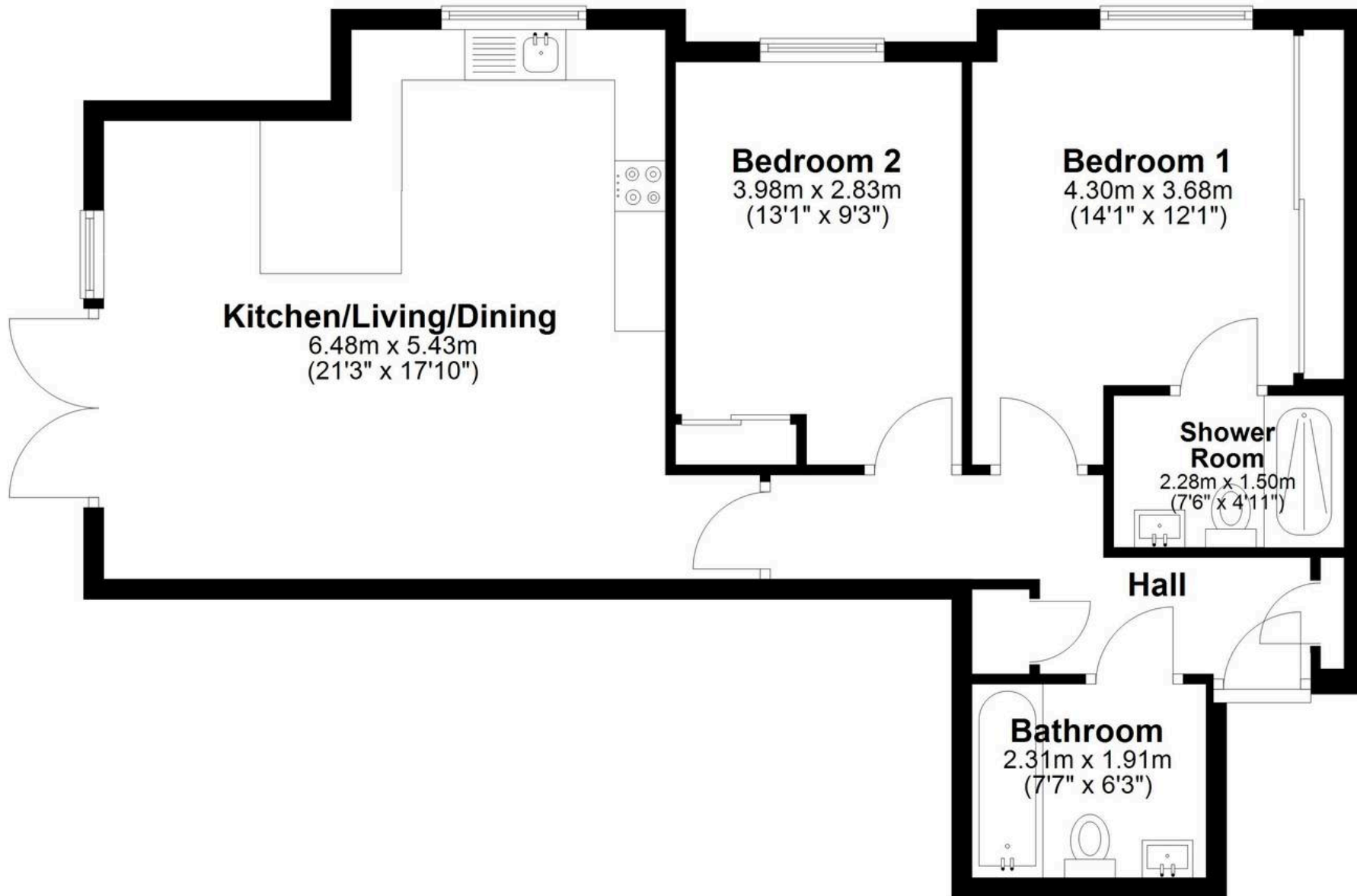
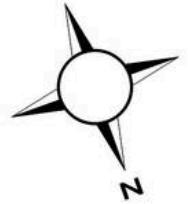
7' 7" x 6' 3" (2.31m x 1.91m)





Second Floor

Approx. 81.6 sq. metres (878.8 sq. feet)



Total area: approx. 81.6 sq. metres (878.8 sq. feet)