

Flat 11

Wilhelm Mohr Court Rayley Lane, Epping
Offers Over £315,000

Council Tax band: C

Tenure: Leasehold

- Allocated parking for two
- En-suite shower room
- Much-loved village location
- Short drive to Epping and the Underground Central line
- Balcony terrace



Kitchen / Lounge / Diner
29' 0" x 12' 1" (8.84m x 3.69m)

Bedroom
13' 10" x 12' 1" (4.22m x 3.69m)

En-suite shower room

Bedroom
11' 1" x 10' 6" (3.38m x 3.21m)

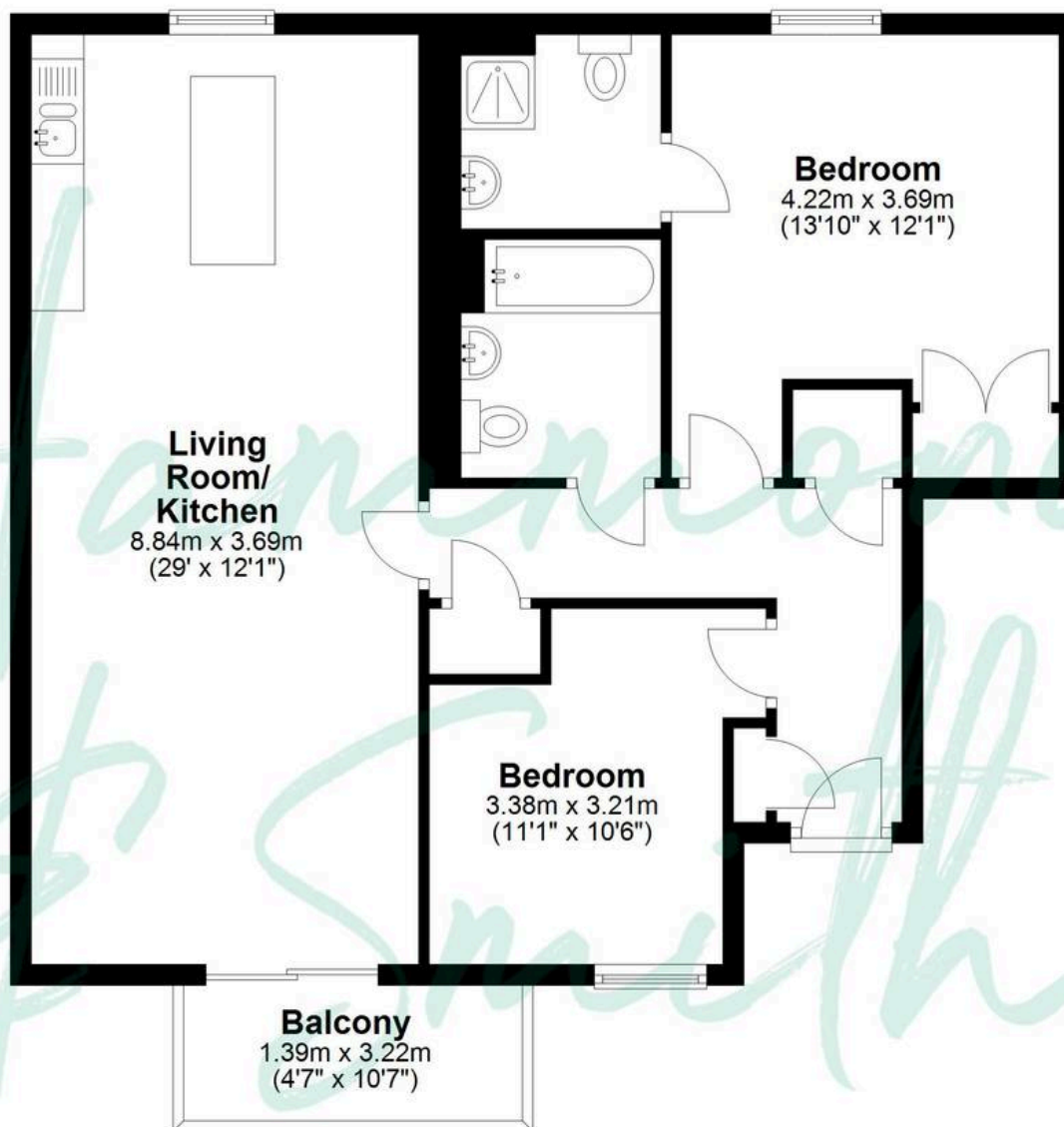
Bathroom





Apartment

Approx. 75.5 sq. metres (812.8 sq. feet)



Total area: approx. 75.5 sq. metres (812.8 sq. feet)

THE FLOORPLAN IS FOR ILLUSTRATIVE PURPOSES ONLY AND IS NOT TO SCALE. Measurements and features are approximate and may differ from the actual property. Verify all details independently; no liability is accepted for errors or omissions.