

38 Bridge Hill

Epping, Essex

Guide Price £550,000

Council Tax band: D

Tenure: Freehold

- Picturesque cottage style home
- Driveway
- Opportunity to extend (STP)
- Spacious family bathroom
- Walking distance to Epping station
- Ivy Chimneys Primary School catchment



Dining Room

12' 2" x 10' 7" (3.71m x 3.23m)

Living Room

12' 2" x 15' 10" (3.71m x 4.83m)

Kitchen

10' 0" x 13' 11" (3.04m x 4.24m)

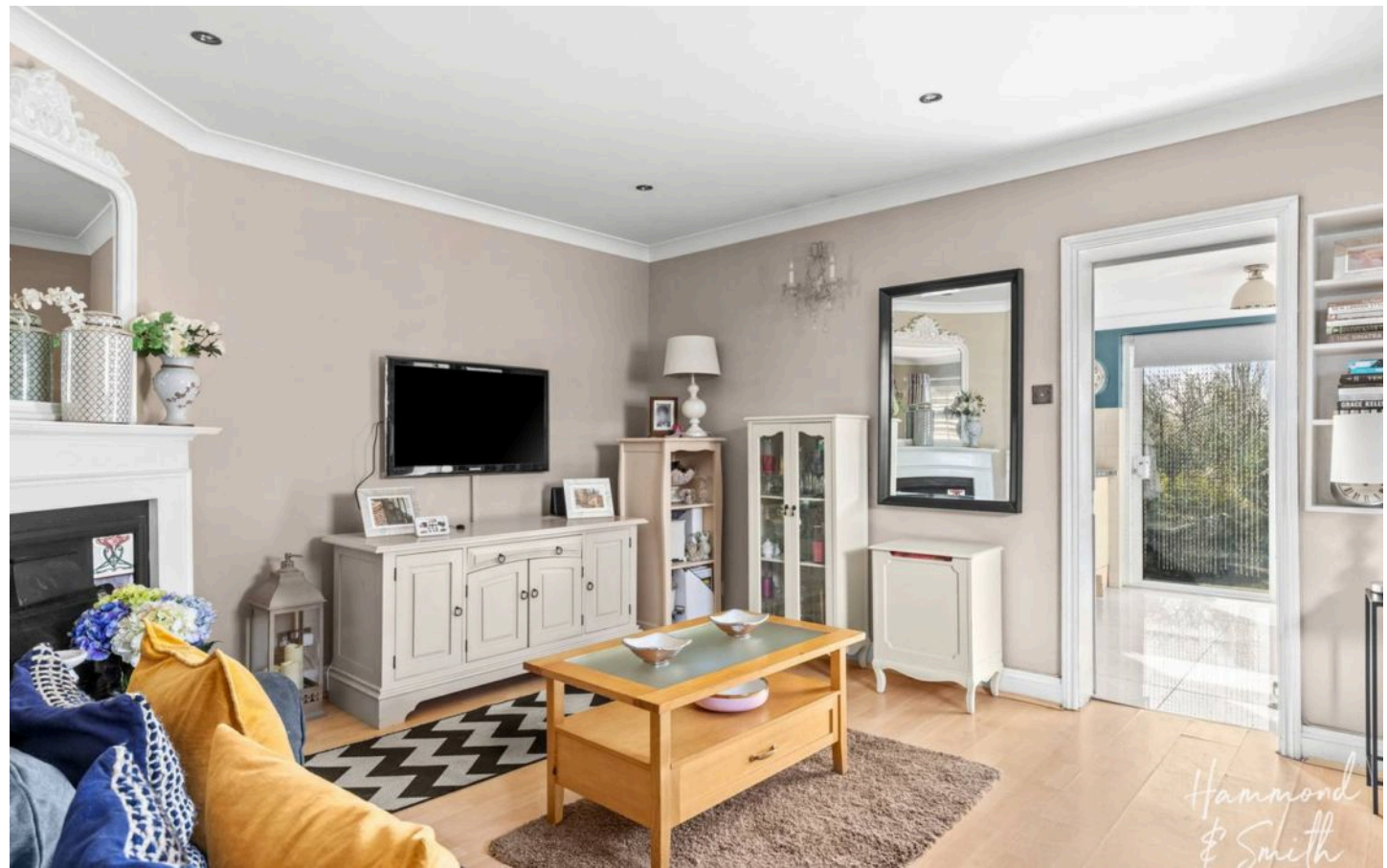
Bedroom

12' 1" x 13' 2" (3.69m x 4.01m)

Bedroom

12' 3" x 8' 9" (3.73m x 2.66m)

Bathroom





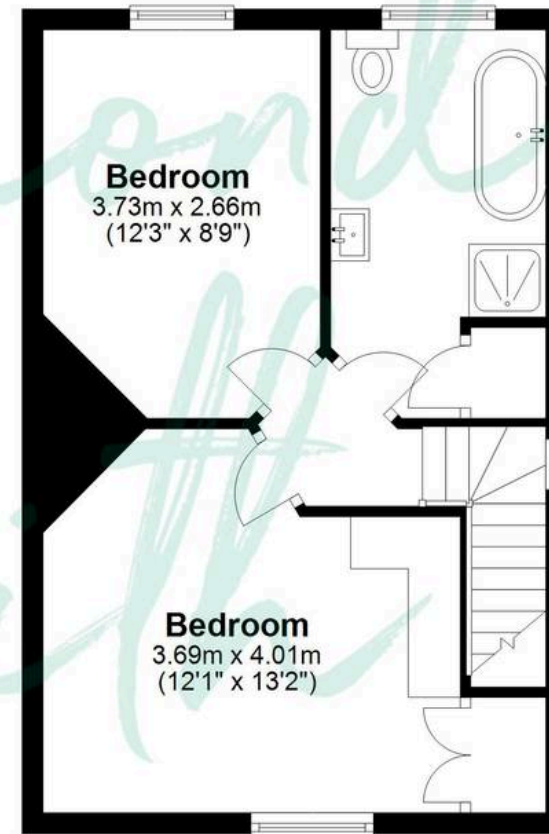
Ground Floor

Approx. 49.6 sq. metres (534.0 sq. feet)



First Floor

Approx. 36.3 sq. metres (390.6 sq. feet)



Total area: approx. 85.9 sq. metres (924.6 sq. feet)

THE FLOORPLAN IS FOR ILLUSTRATIVE PURPOSES ONLY AND IS NOT TO SCALE. Measurements and features are approximate and may differ from the actual property. Verify all details independently; no liability is accepted for errors or omissions.