

# Noelms

Epping Green, Essex

Guide Price £725,000

Council Tax band: F

Tenure: Freehold

- THREE BEDROOM DETACHED CHALET BUNGALOW
- POTENTIAL TO EXTEND
- AMPLE OFF ROAD PARKING AND GARAGE
- CLOSE TO LOCAL PRIMARY SCHOOL
- UTILITY ROOM
- PRIME VILLAGE LOCATION
- GAS CENTRAL HEATING
- DOUBLE GLAZED
- GREAT FAMILY HOME WITH LARGE GROUND FLOOR AREA

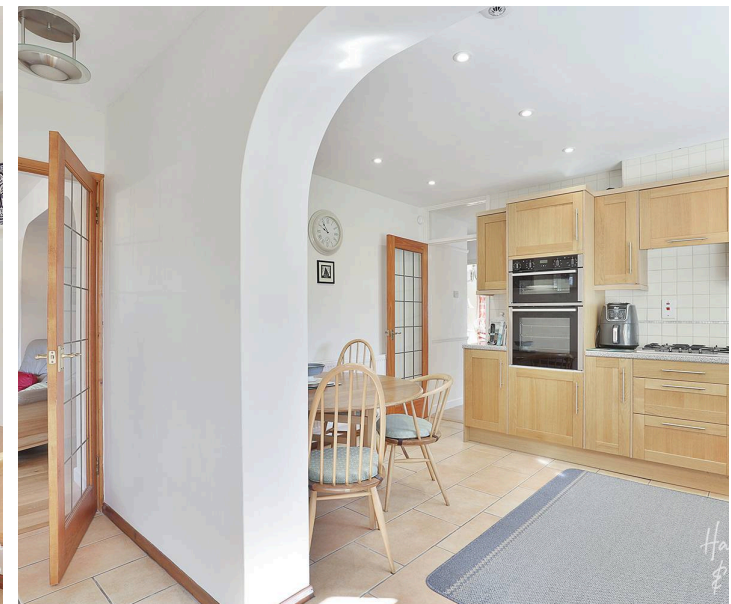




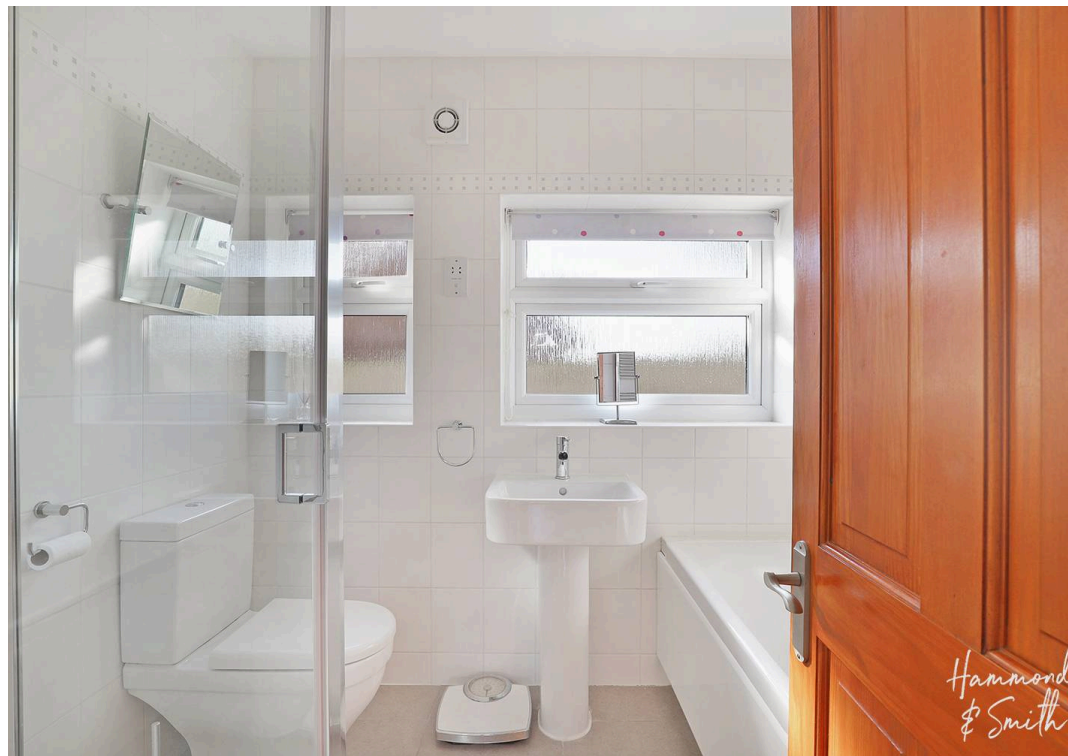
Full of light and space, this three double bedroom chalet bungalow has heaps of potential and sits in the peaceful village of Epping Green.

Wonderfully welcoming with superb internal and external space, there's loads of options here to make this home your own, plus plenty of scope to extend (STP) should you wish. A gated and spacious gravelled drive welcomes you with low maintenance neat landscaping giving plenty of kerb appeal. Step inside to find a central hallway with the rooms beyond - two receptions, a kitchen and separate utility, ground floor shower room and additional bathroom, plus the first of the three bedrooms. The front reception room is blessed with its timeless gorgeous bay window overlooking the front, plus the stairs leading to the second floor. The second larger reception with French doors onto the rear garden, is currently used as a through-lounge/diner. Also at the back, the kitchen comes complete with plenty of storage housed in shaker style units with integrated oven and hob. A great size, there's plenty of room for a breakfast table and chairs to enjoy that all important morning coffee fix. From here you've access to the ground floor shower room and utility - always a handy addition keeping everything spic and span. Completing the ground floor is the largest of the bedrooms, with fitted sliding wardrobes. Head upstairs to find an additional two double bedrooms along with a WC.

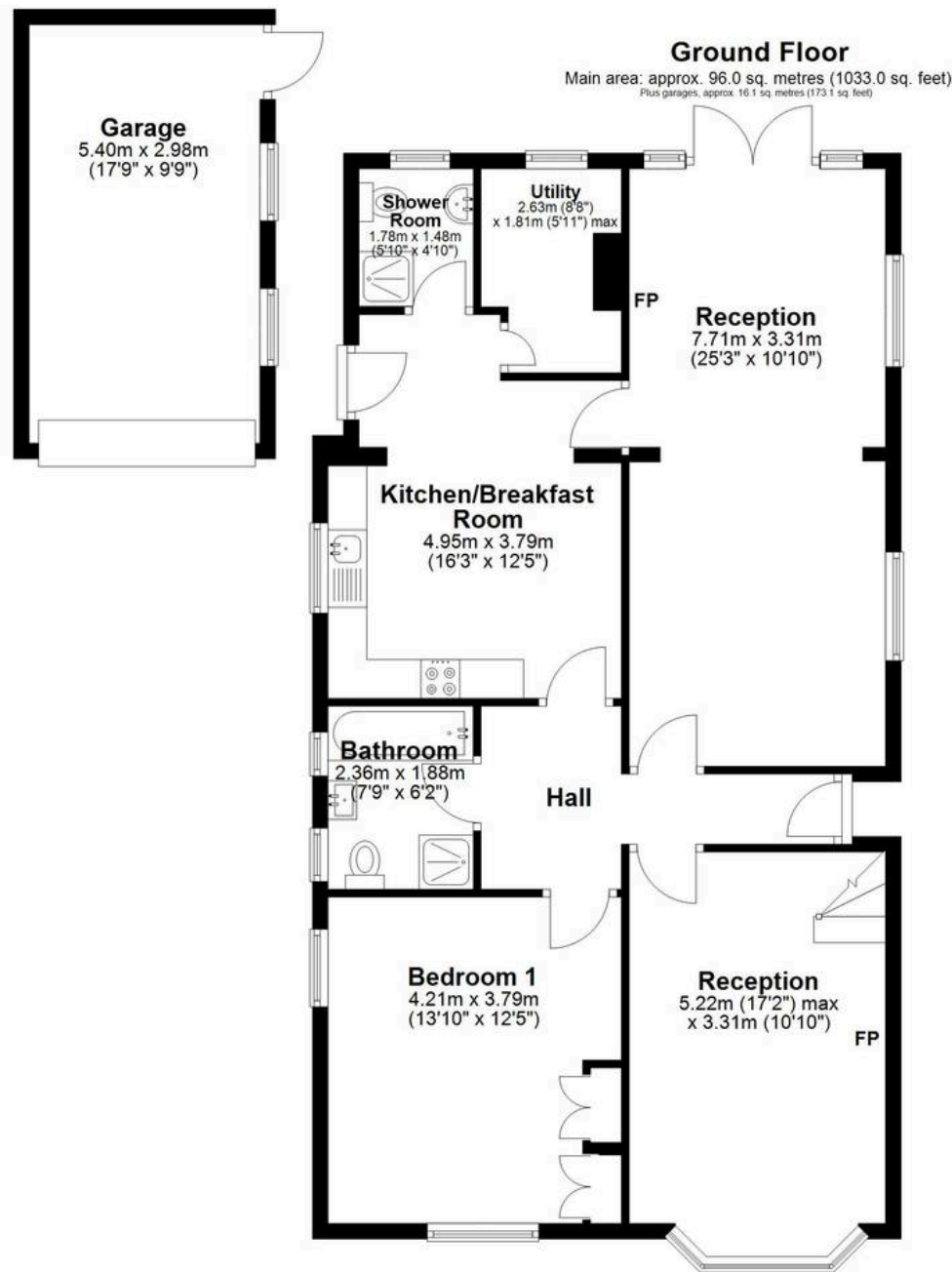
Outside the garden is beautifully private and peaceful with the added bonus of a detached garage - perfect for storage, a home-gym, or whatever takes your fancy! There's a fabulous collection of mature plants and trees giving this garden plenty of character, plus both a lawn and patio that's perfect for entertaining.











Main area: Approx. 124.4 sq. metres (1338.6 sq. feet)  
Plus garages, approx. 16.1 sq. metres (173.1 sq. feet)

