

1 Wheelers

Epping, Essex

Council Tax band: D

Tenure: Freehold

- End of terrace
- Dropped curb for future driveway
- Potential to extend (STP)
- Short walk to Epping high street and station
- Side access
- Good sized rear garden
- South facing garden



Hallway

Living Room

13' 1" x 12' 6" (4.00m x 3.80m)

Kitchen / Dining Room

18' 7" x 10' 0" (5.67m x 3.04m)

Bedroom 1

13' 9" x 12' 2" (4.19m x 3.71m)

Bedroom 2

10' 5" x 10' 0" (3.17m x 3.06m)

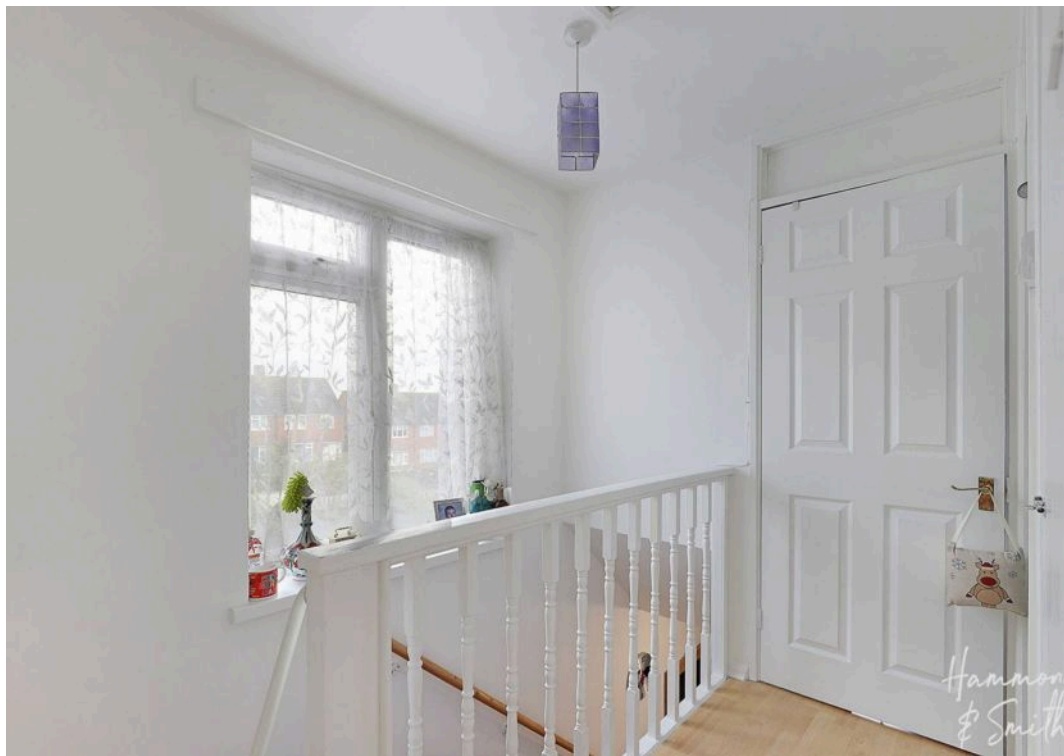
Bedroom 3

8' 7" x 8' 3" (2.61m x 2.51m)

Shower Room

8' 3" x 5' 6" (2.51m x 1.68m)





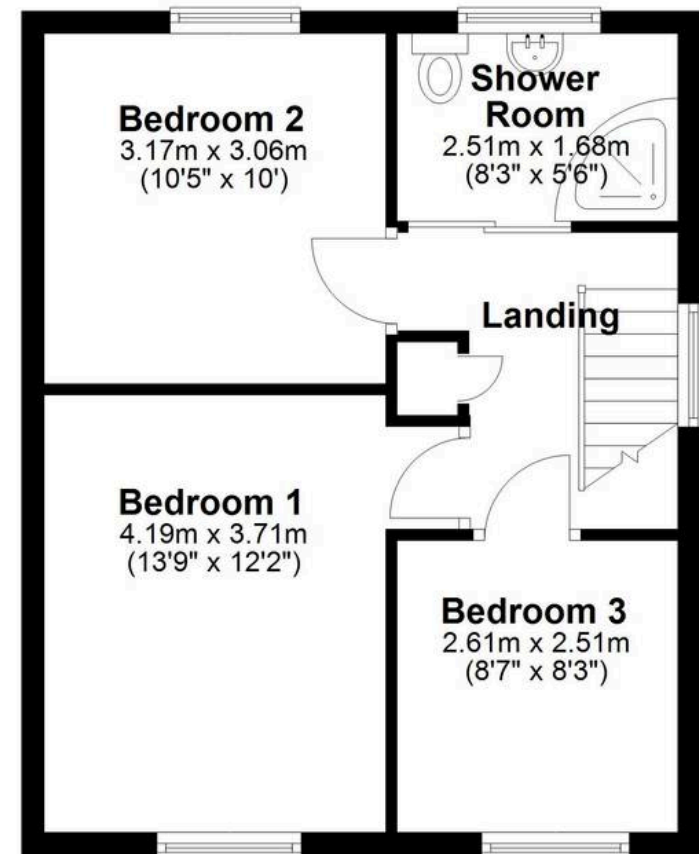
Ground Floor

Approx. 44.5 sq. metres (479.4 sq. feet)



First Floor

Approx. 41.2 sq. metres (443.8 sq. feet)



Total area: approx. 85.8 sq. metres (923.2 sq. feet)