

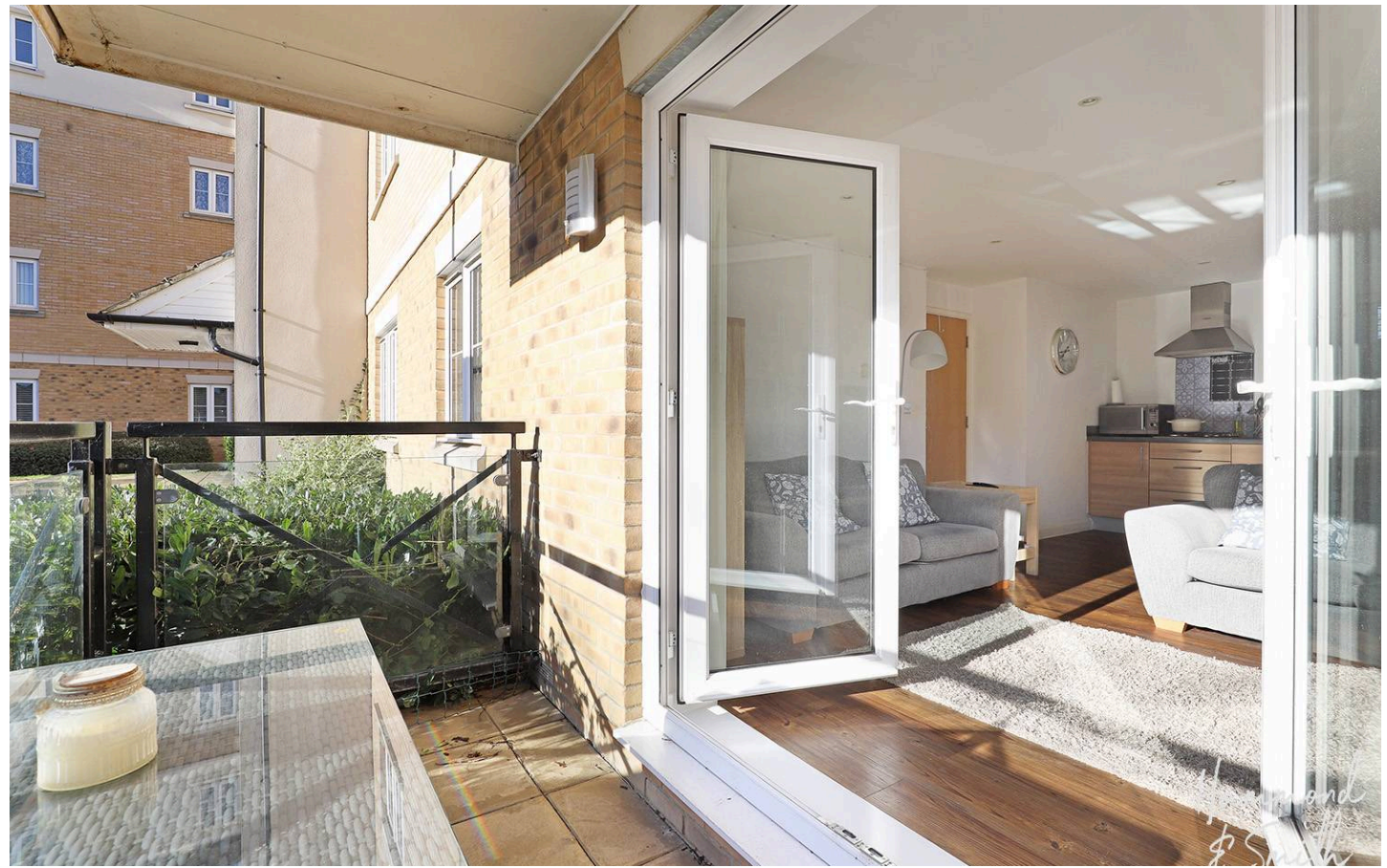
# 68 Blenheim Square

North Weald, Epping

Council Tax band: C

Tenure: Leasehold

- Ground floor apartment with allocated parking
- En-suite shower room
- Balcony terrace
- Short drive to the M11 and Epping's underground station
- Village location





## Hallway

## Kitchen / Living / Dining

19' 7" x 14' 8" (5.96m x 4.46m)

## Bedroom 1

10' 9" x 10' 0" (3.27m x 3.04m)

## En-suite Shower Room

7' 4" x 3' 11" (2.23m x 1.19m)

## Bedroom 2

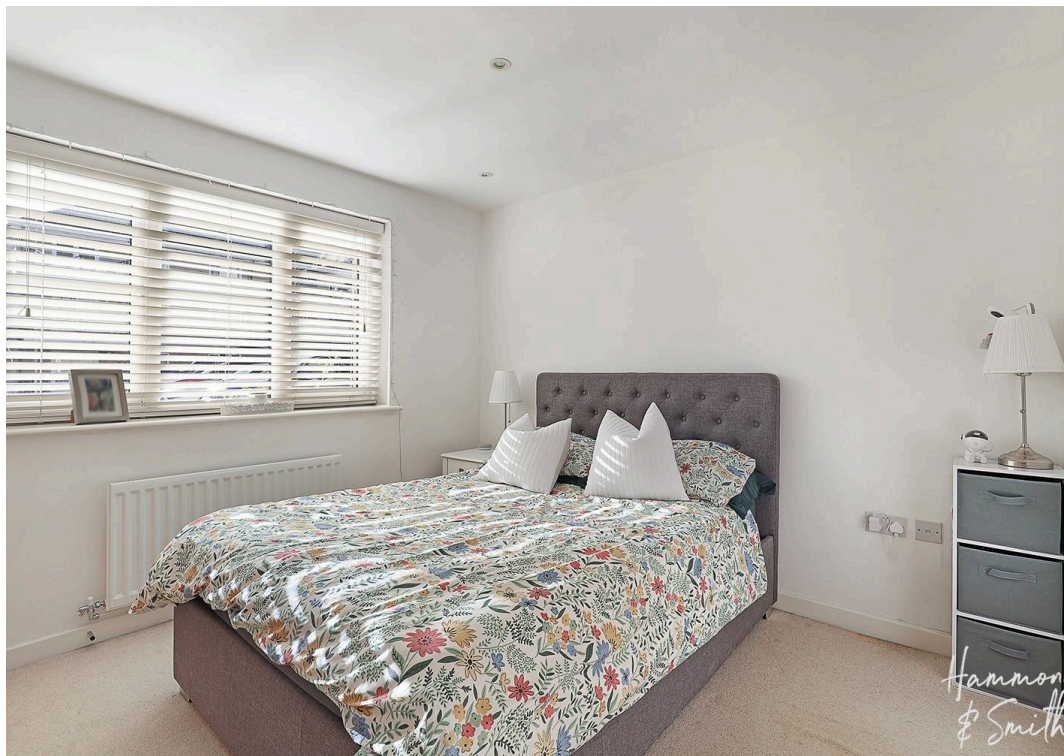
10' 0" x 8' 3" (3.04m x 2.52m)

## Bathroom

6' 2" x 5' 4" (1.89m x 1.63m)

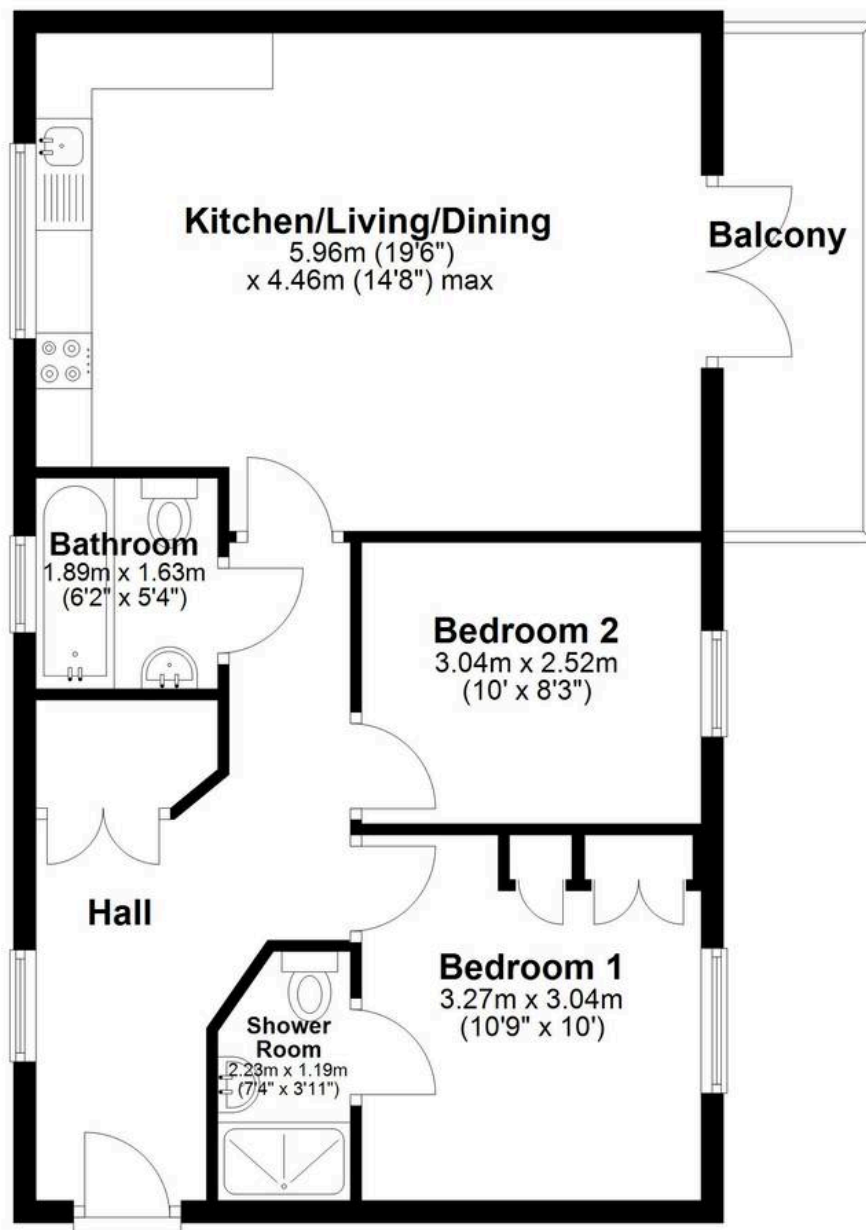






## Ground Floor

Approx. 62.0 sq. metres (667.7 sq. feet)



Total area: approx. 62.0 sq. metres (667.7 sq. feet)